

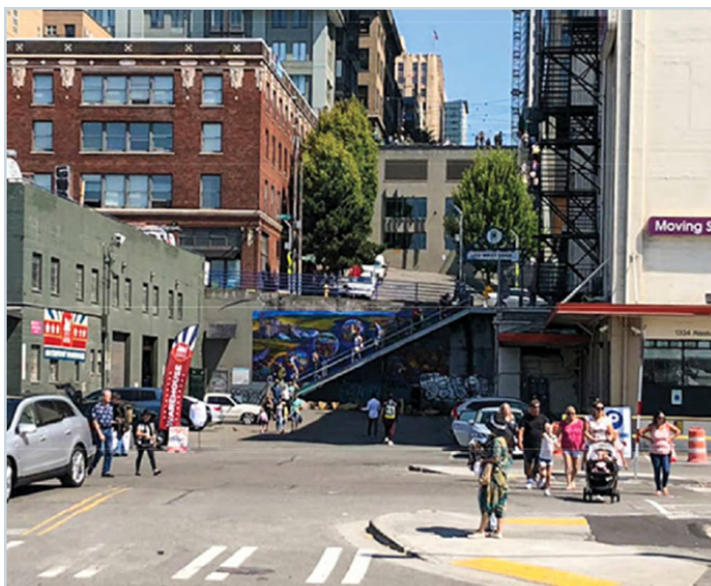


# NEW UNION STREET PEDESTRIAN BRIDGE

A more accessible connection between Western Ave and Alaskan Way opens December 9, 2022.

Waterfront Seattle began construction of a new pedestrian bridge that includes a staircase and an elevator in March 2021 and we are excited to announce completion of the new Union Street Pedestrian Bridge. These additions will transform Union St into a more accessible connection between downtown and the waterfront.

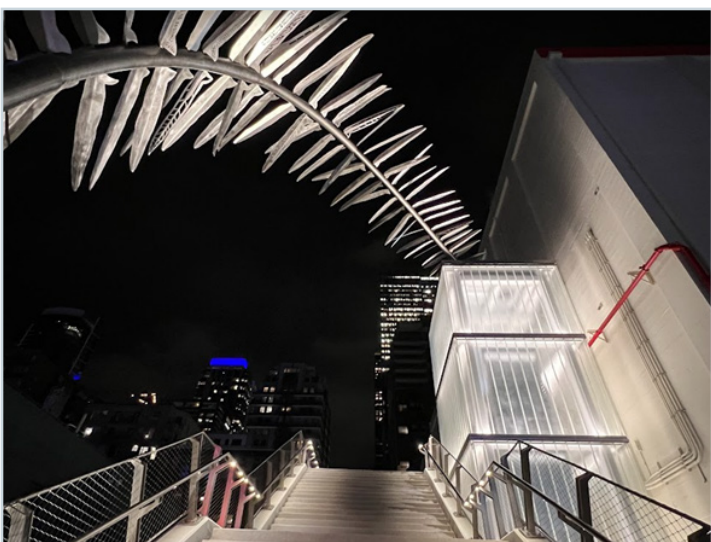
## View from Alaskan Way at Union St, looking east:



Before



After



Union St Pedestrian Bridge stairs, elevator and sculpture at night. Photo Credit: Schemata Workshop

## WHAT TO EXPECT:

- 95-foot-long walkway
- Stairs connecting Alaskan Way to the bridge
- Elevator with semi-transparent materials that provide visibility and light
- Lighting integrated in the railings of the bridge and stairs, underneath the bridge deck and within the elevator for a more pleasant nighttime experience
- Intersection improvements on Western Avenue, including new ADA curb ramps, pedestrian railing, and sculptural concrete barriers.
- Two permanent public artworks by Seattle artist **Norie Sato**, including a monumental structure that is reminiscent of a fern and a screen wall that follows the length of the pedestrian bridge – bringing attention to the ecology of the shoreline that persists even in the midst of built infrastructure.



## Construction Overview

Construction along Alaskan Way continues to build the promenade between Yesler Way and Pike St. North of Union St, construction on the east side of Alaskan Way continues while we work to complete the elevated roadway connection between the waterfront and Belltown – which includes new sidewalks, bike facilities and landscaping.



Map of construction work zones.



### SIGN UP FOR CONSTRUCTION UPDATE EMAILS

Sign up for our construction update email list at [waterfrontseattle.org/construction-updates-mailing-list](https://waterfrontseattle.org/construction-updates-mailing-list).



### VISIT DOWNTOWNSEATTLEPARKING.ORG

Visit [downtownseattleparking.org](https://downtownseattleparking.org) to find rates, hours and directions to thousands of parking spaces in the area.



### WATERFRONTCONSTRUCTION.ORG

The Waterfront is going to be a busy place over the next several years. Visit [waterfrontconstruction.org](https://waterfrontconstruction.org) for more information on multiple projects compiled in one place.

### QUESTIONS?

If you have questions or would like more information about the Waterfront Seattle program, please call, email or visit our website.

206.499.8040

[info@waterfrontseattle.org](mailto:info@waterfrontseattle.org)

[waterfrontseattle.org](https://waterfrontseattle.org)