

PIER 58

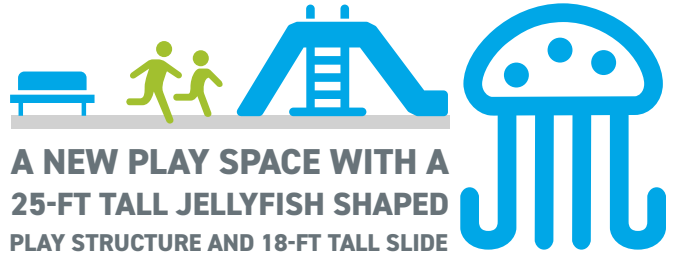
WHAT'S NEW FOR YOU

ON THE PIER

47,280 SQ FT OF NEW PARK



JUST OVER 10 NBA BASKETBALL COURTS



A NEW PLAY SPACE WITH A 25-FT TALL JELLYFISH SHAPED PLAY STRUCTURE AND 18-FT TALL SLIDE



A TREE GROVE WITH 6 TYPES OF TREES, SEATING AND SHADE



AN ELEVATED LAWN



OVER 400 NEW PLANTS

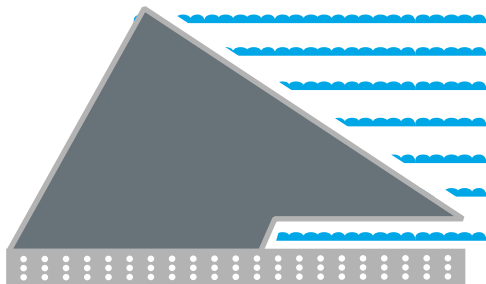
AN OPEN PLAZA AND
EVENT SPACE



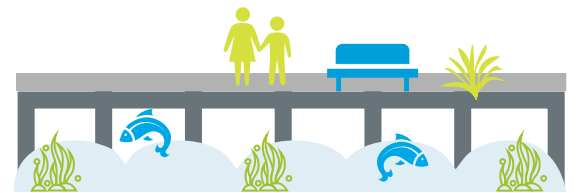
THE RESTORED WATERFRONT
FOUNTAIN SURROUNDED BY A NEW
4,500 GALLON WATER BASIN
A FOUNTAIN ABOVE THE SOUND!



MARINE HABITAT IMPROVEMENTS



NEW PIER SHAPE GIVES
PASSAGE TO FISH ENTERING
THE MIGRATION CORRIDOR



4,725 SQ FT OF OPEN AREA
ABOVE THE INTERTIDAL ZONE PROVIDING
ADDITIONAL LIGHT
TO MARINE LIFE



WATERFRONTSEATTLE.ORG

To learn more about the unique design and features at Pier 58 visit our website.

 WaterfrontSEA

 WaterfrontSeattle

 Waterfrontsea

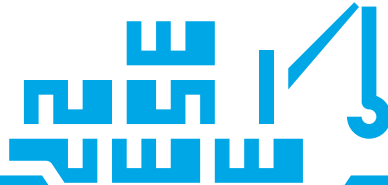


PIER 58

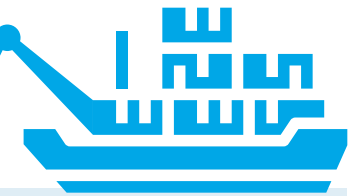
HOW IT'S **BUILT**

THE MAJORITY OF CONSTRUCTION
TAKES PLACE FROM

THE WATER
THANKS TO BARGES

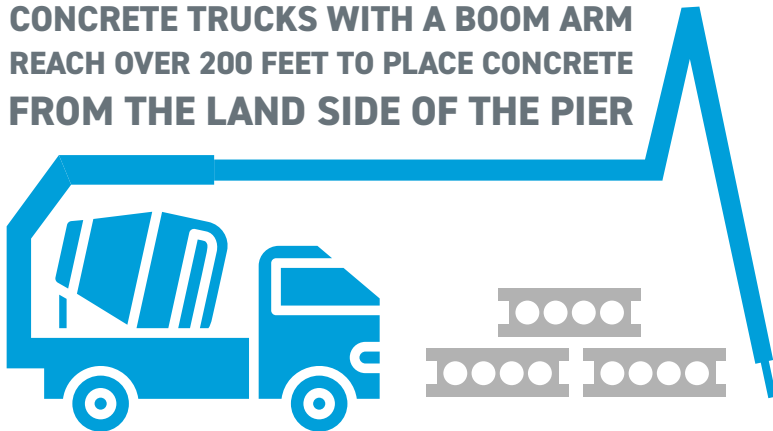


128
STEEL PILES



BETWEEN 75 TO 127 FT IN
LENGTH INSTALLED DEEP
IN UNDERWATER SOILS

CONCRETE TRUCKS WITH A BOOM ARM
REACH OVER 200 FEET TO PLACE CONCRETE
FROM THE LAND SIDE OF THE PIER



THE **PACIFIC LIFTER**,
THE LARGEST BARGE MOUNTED
CRANE IN THE REGION
AT 350-FT TALL
TO LIFT AND SET THE
PILE CAPS AND DECK PANELS

205 PRECAST CONCRETE HOLLOW CORE PANELS CREATE A BASE
FOR THE DECK AND SPAN BETWEEN THE PILE CAPS.
EACH WEIGH APPROXIMATELY 35,000 POUNDS



41 PILE CAPS,

70,000 - 170,000 POUND CONCRETE BEAMS,



SPANNING OVER THREE PILES
HELP DISTRIBUTE AND SUPPORT
THE LOAD OF THE DECK

3,400 CUBIC YARDS
OF CONCRETE AND



OVER 870,000 POUNDS OF
REINFORCING STEEL USED
TO FINISH THE DECK AND
TIE IT ALL TOGETHER



4,757 FT TOTAL OF
ELECTRICAL CONDUITS
POWER DECK LIGHTS,
RAILING LIGHTS, AND OTHERS...