



NORTH WATERFRONT NEIGHBOR MEETING

Angela Brady, PE

Deputy Director, Office of the Waterfront and Civic Projects

January 23, 2020



WATERFRONT SEATTLE PROGRAM



SEAWALL PROJECT



SR 99 TUNNEL PROJECT



**SEATTLE MULTIMODAL TERMINAL AT
COLMAN DOCK PROJECT**



PARTNER PROJECTS

Project construction dates are tentative and
subject to change

ELLIOTT BAY

OLYMPIC
SCULPTURE
PARK

Waterfront Seattle
(2019+)

Pier 62/63 Rebuild
(2017-2019)

Seattle Multimodal Terminal
at Colman Dock Project
(2017-2023)

Seawall Project
(2013-2017)

PIKE PLACE
MARKET

BELLTOWN

WEST EDGE

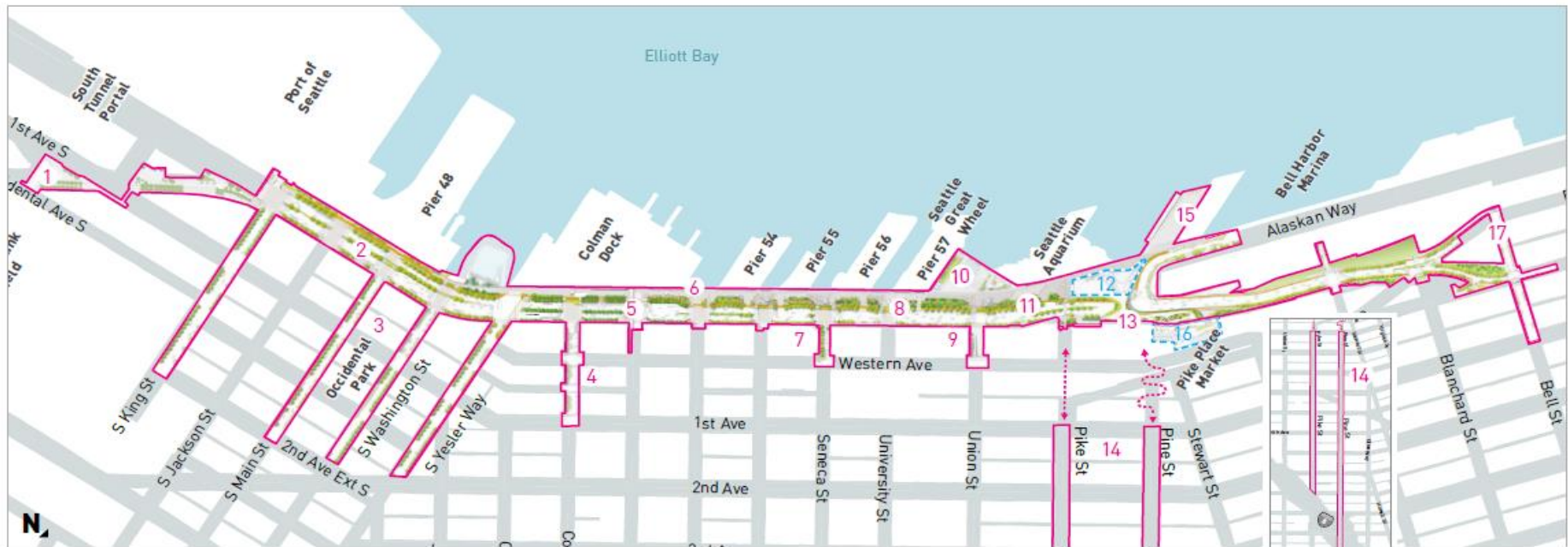
RETAIL CORE

SR 99 Tunnel Project
(2011-early 2019)

PIONEER
SQUARE

STADIUMS

WATERFRONT SEATTLE PROGRAM



○ Waterfront Seattle Program Area

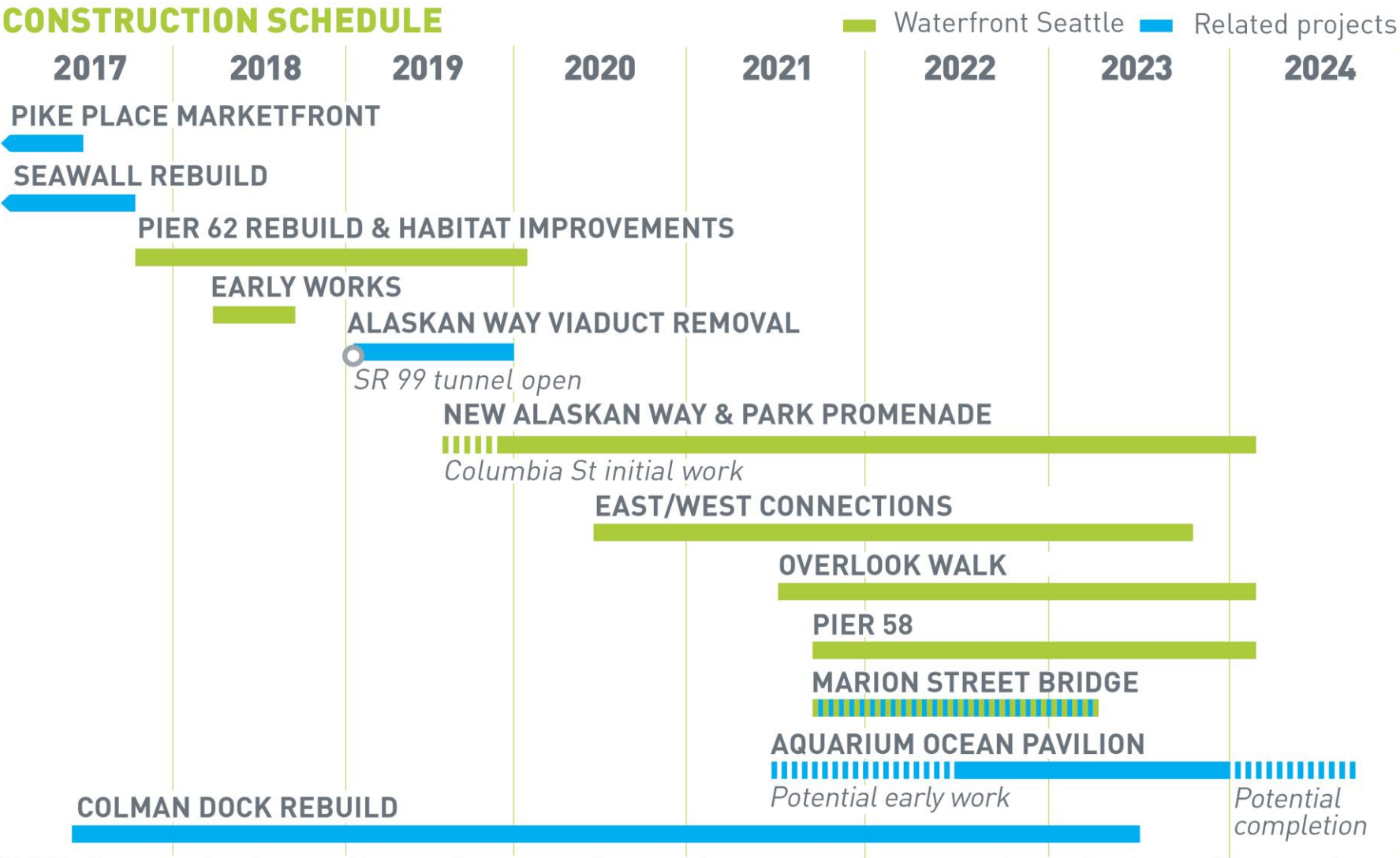
○ Related Projects

- 1 Railroad Way
- 2 Alaskan Way + Elliott Way
- 3 Pioneer Square Streets
- 4 Columbia Street
- 5 Marion Street Pedestrian Bridge
- 6 Seawall

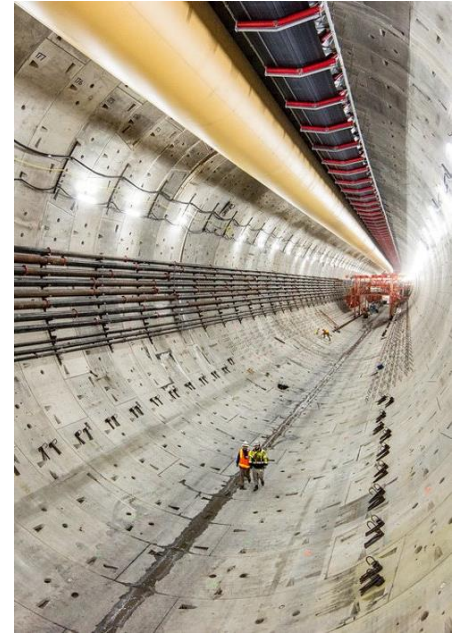
- 7 Seneca Street
- 8 Promenade
- 9 Union Street Elevator and Stairs
- 10 Waterfront Park
- 11 Protected bike lane
- 12 Seattle Aquarium expansion
- 13 Overlook Walk

- 14 Pike Pine Renaissance: Act One
- 15 Pier 62 Rebuild
- 16 Pike Place Market's MarketFront
- 17 Bell Street Park Extension

CONSTRUCTION SCHEDULE



NOTE: Construction dates subject to change pending ongoing construction sequencing evaluation and assumptions for all projects



SEAWALL, TUNNEL AND VIADUCT DEMO PROJECTS COMPLETE



**COLUMBIA CONSTRUCTION
STARTED AUGUST 2019
ALASKAN WAY STARTED IN
NOVEMBER 2019**



TYPICAL CROSS SECTION

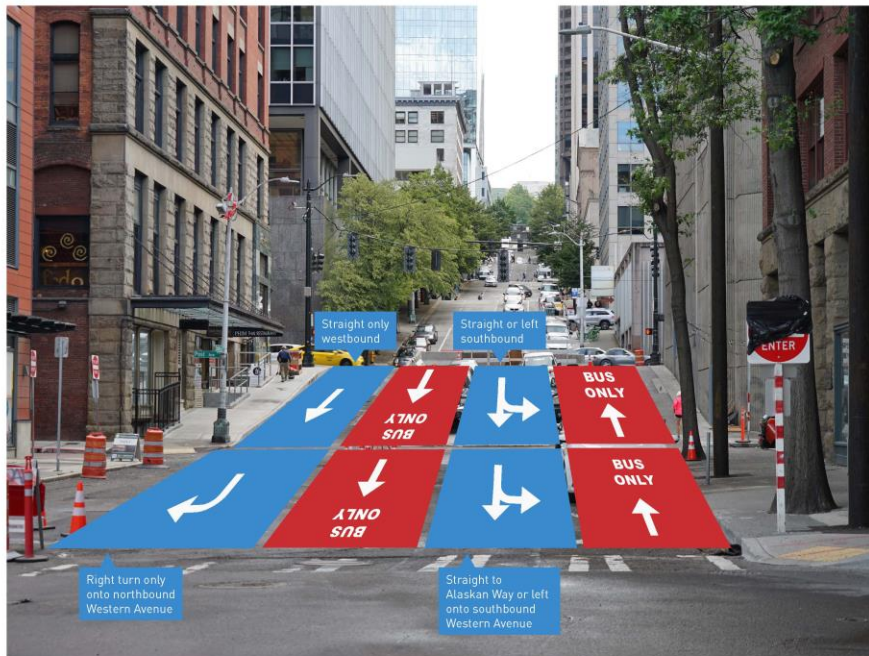


TYPICAL WORK ZONE - YEAR 1

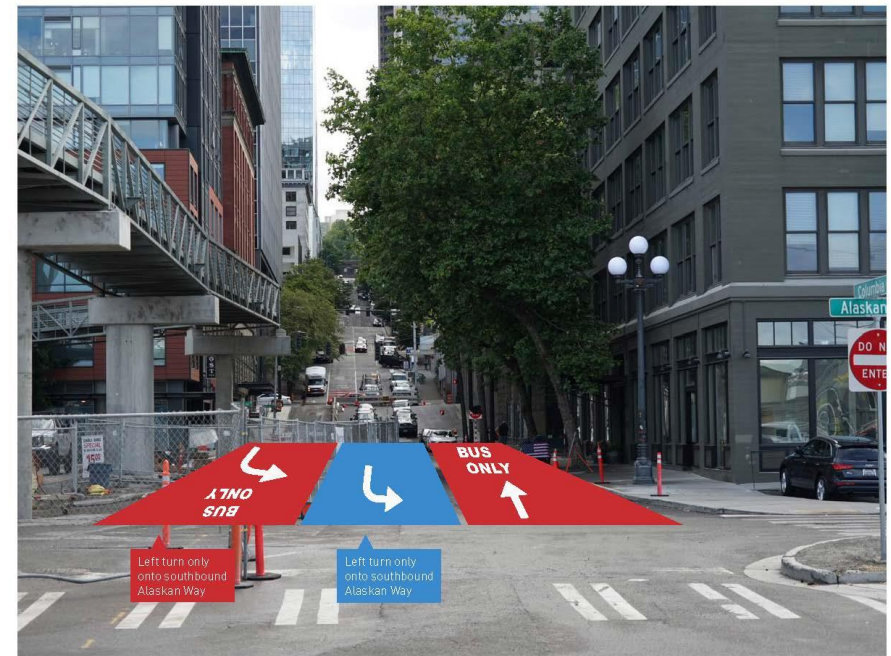




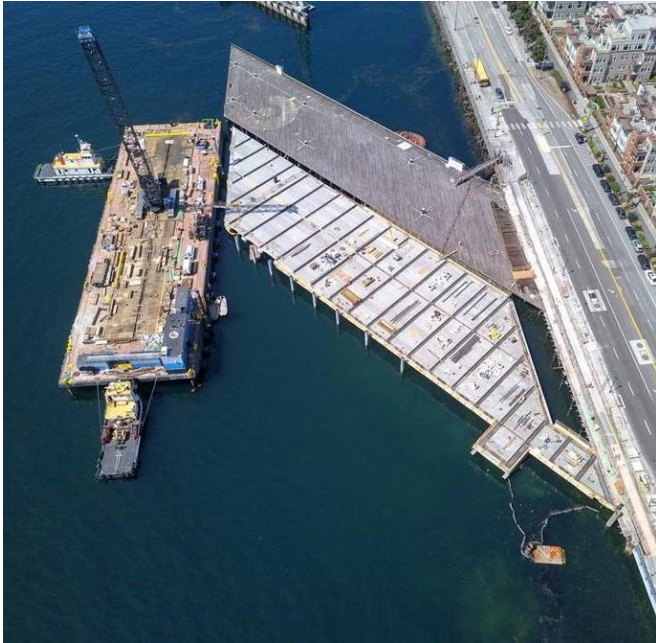
COLUMBIA STREET WILL OPEN TO TRANSIT IN EARLY 2020



1st Avenue to Western Avenue



Western Avenue to Alaskan Way



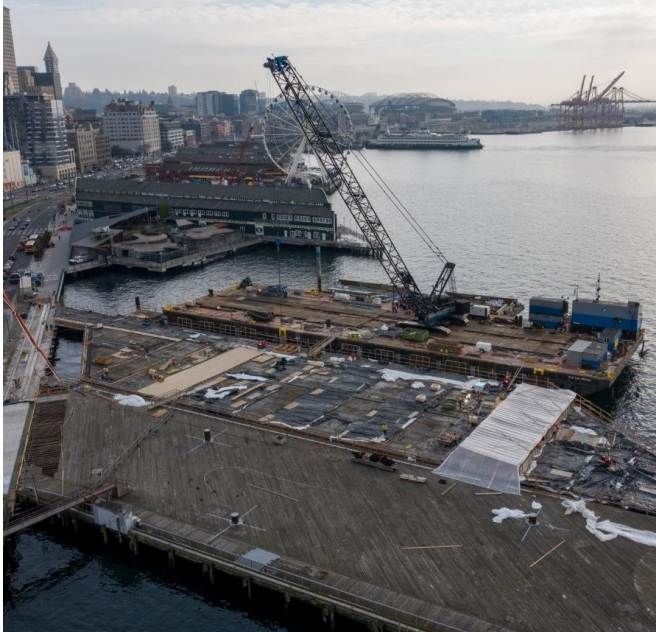
PIER 62 AND HABITAT BEACH IN 2020

PROMENADE AT UNION



PROMENADE AT UNION





PIER 62 WORK TODAY

WORK NORTH OF PIKE STREET



- Construction of new Elliott Way began in December
- Will serve as vital connection between Alaskan Way and Belltown
- Establishing work zone, locating utilities, and removing asphalt



LENORA ST PEDESTRIAN BRIDGE CLOSURE



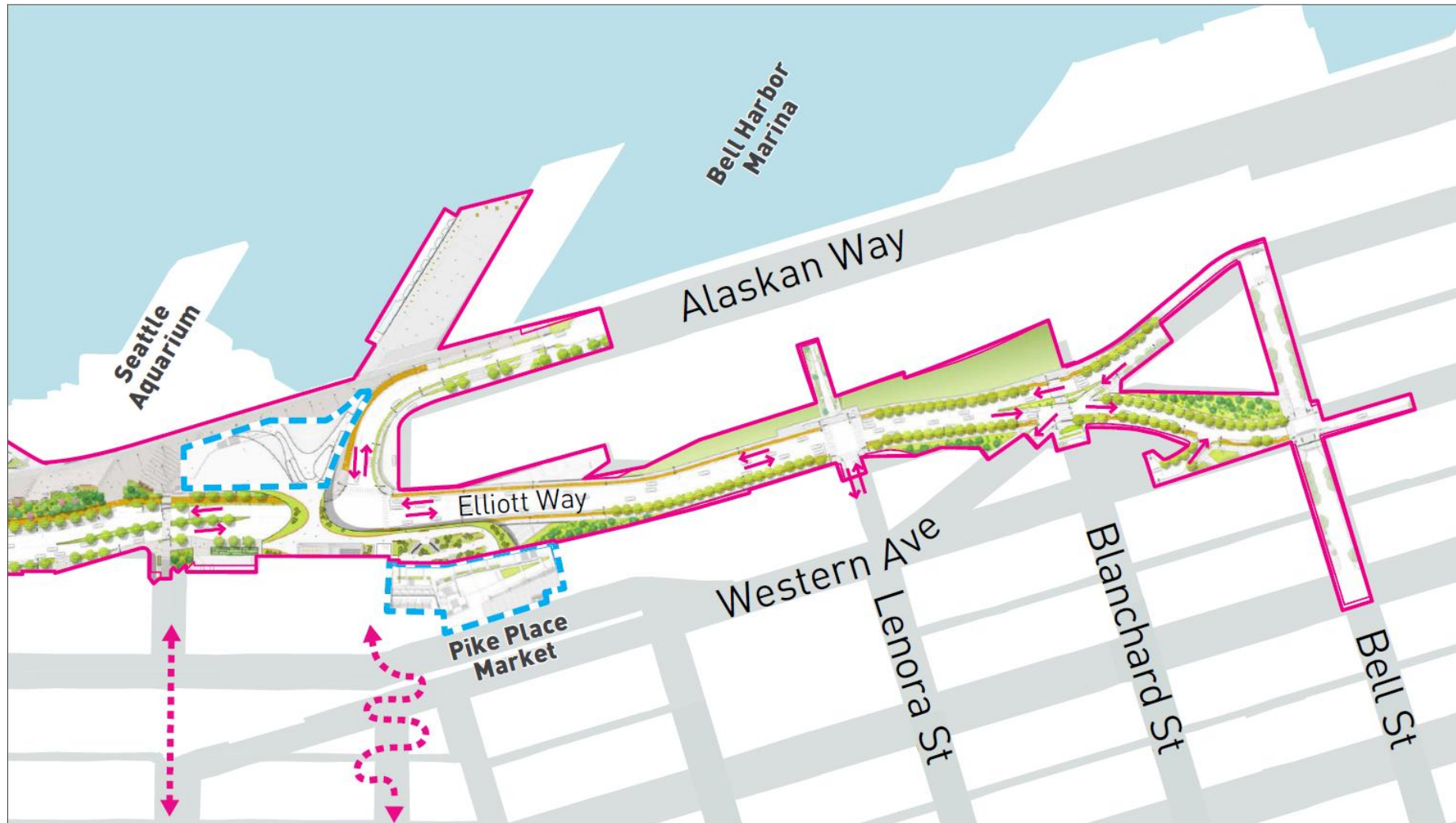
- Closure of Lenora St Pedestrian Bridge and adjacent stairs/elevator
- Expected to last 2-3 years
- Purpose of meeting appropriate grades of new Elliott Way sidewalk/roadway



CONSTRUCTION OF NEW ELLIOTT WAY



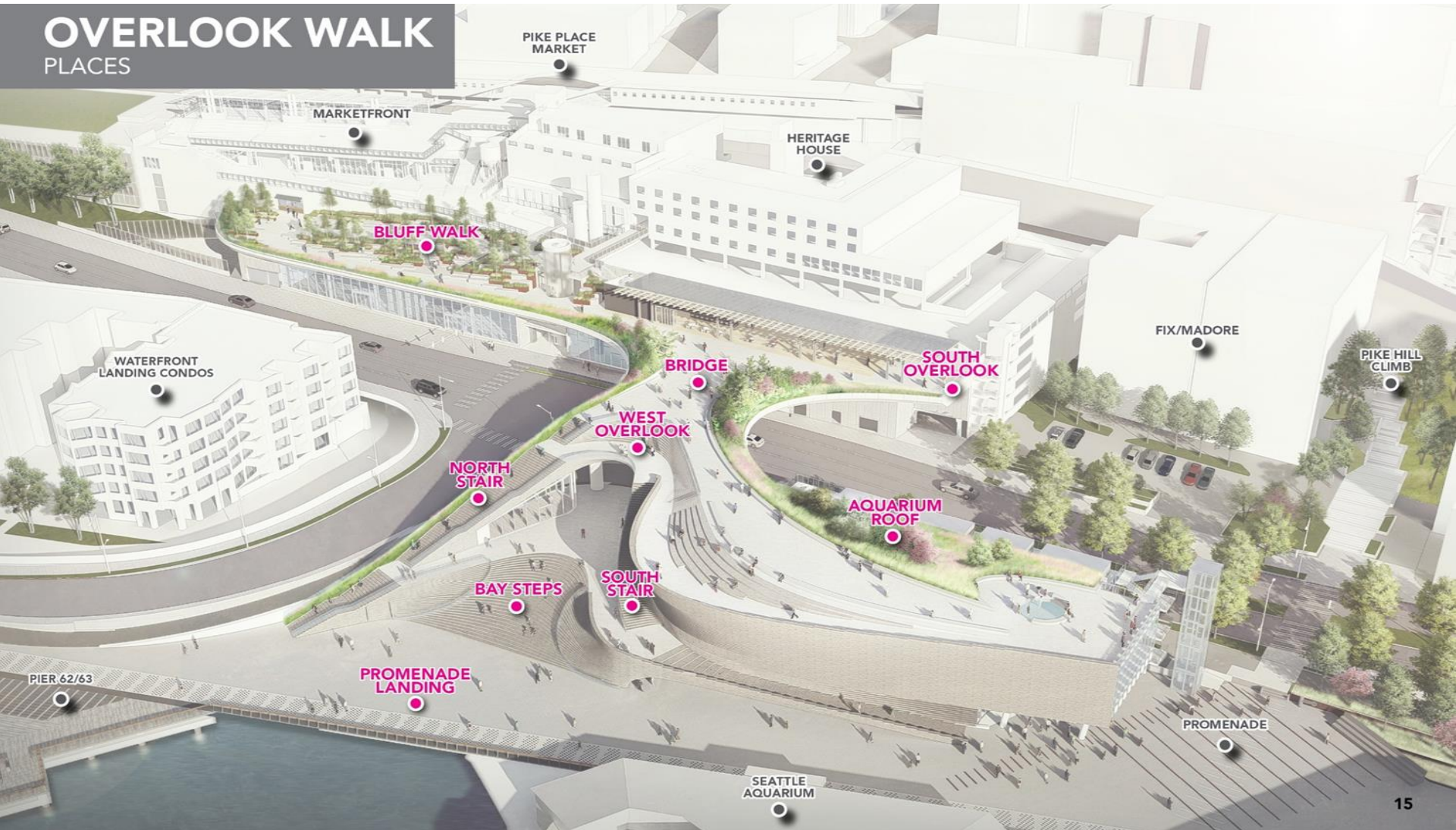
FUTURE ELLIOTT WAY/PINE STREET



OVERLOOK WALK



OVERLOOK WALK PLACES



OVERLOOK WALK



©LMN2019

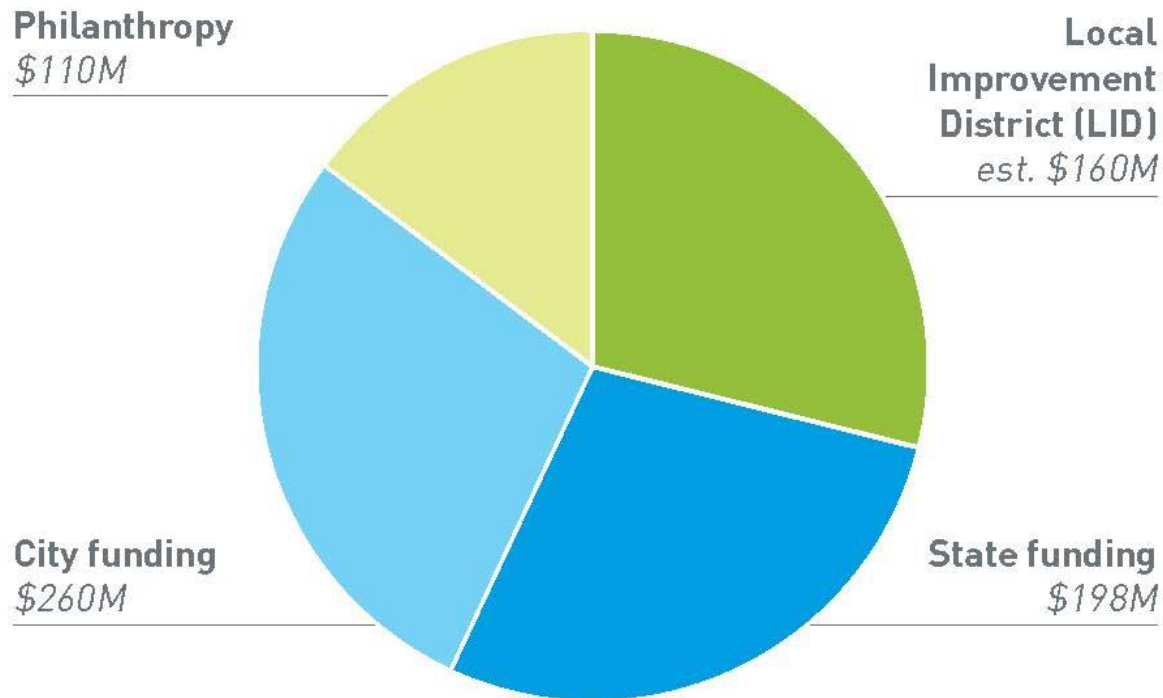
OVERLOOK WALK AND NEW AQUARIUM



WATERFRONT SEATTLE FUNDING



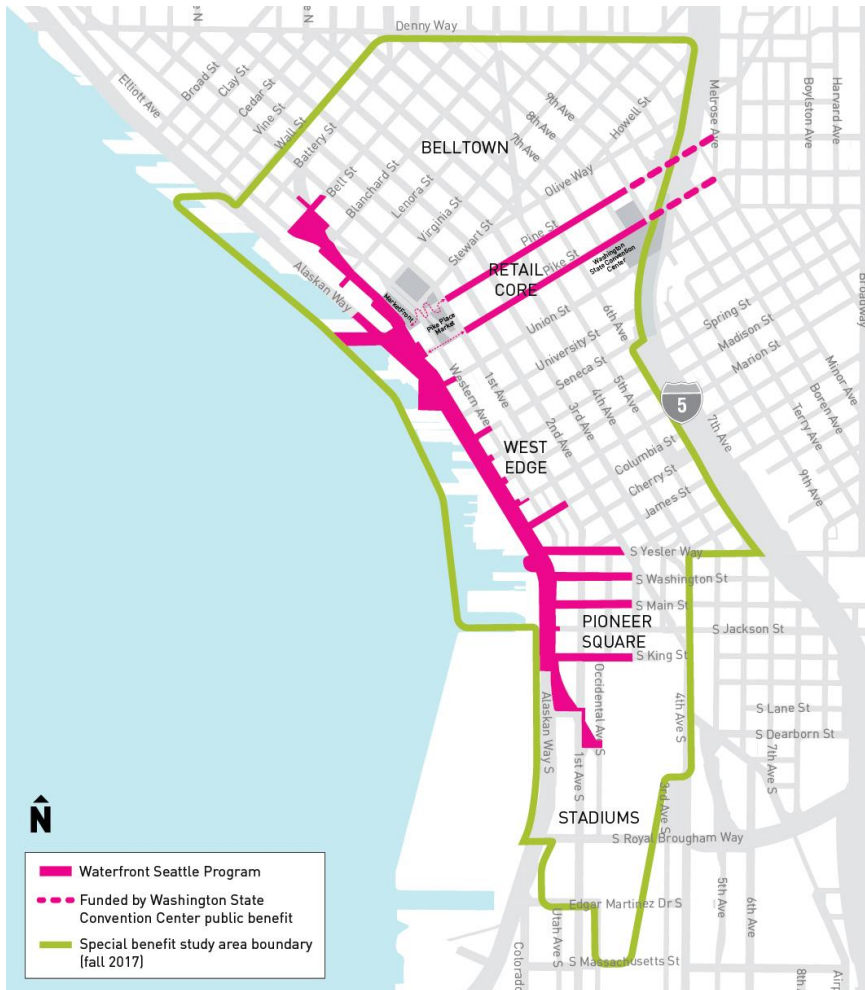
FUNDING



TOTAL= \$728M

*Does not include WSDOT-funded Marion Street Pedestrian Bridge over Alaskan Way (pending future agreement)

WATERFRONT LOCAL IMPROVEMENT DISTRICT (LID)



Total parcels: 6,130
(4,960 condominiums)

Total appraised value: \$49B

Total special benefit from the new waterfront:
\$415M (\$58M condominiums)

Total Assessment:
\$160M

Assessment ratio:
38% of total benefit

FRIENDS/CITY PARTNERSHIP









QUESTIONS?

Contact us at:

info@waterfrontseattle.org

206.499.8040

waterfrontseattle.org

OVERSIGHT COMMITTEE



- Mayor/Council appointed. 19 members, including:
 - At-Large (6)
 - LID Tenant/Owner (8)
 - Non-Profit (5)
- Advises on central waterfront operations, maintenance, safety, cultural and recreational programming
- Identifies “Performance Standard” in coordination with Friends and City
 - Based on 2018 O&M analysis and national best practices
- Provides annual report to Mayor and Council



WATERFRONT PARK OPERATIONS



- Partnership with non-profit “Friends” organization:
 - \$4.8M Annual City funding for maintenance
 - \$1-\$2M private fundraising for programming and activation
- Free public events year round
- Dedicated, specialized maintenance team
- Oversight Committee to ensure accountability

PIER 62 OPENING EARLY 2020!

