

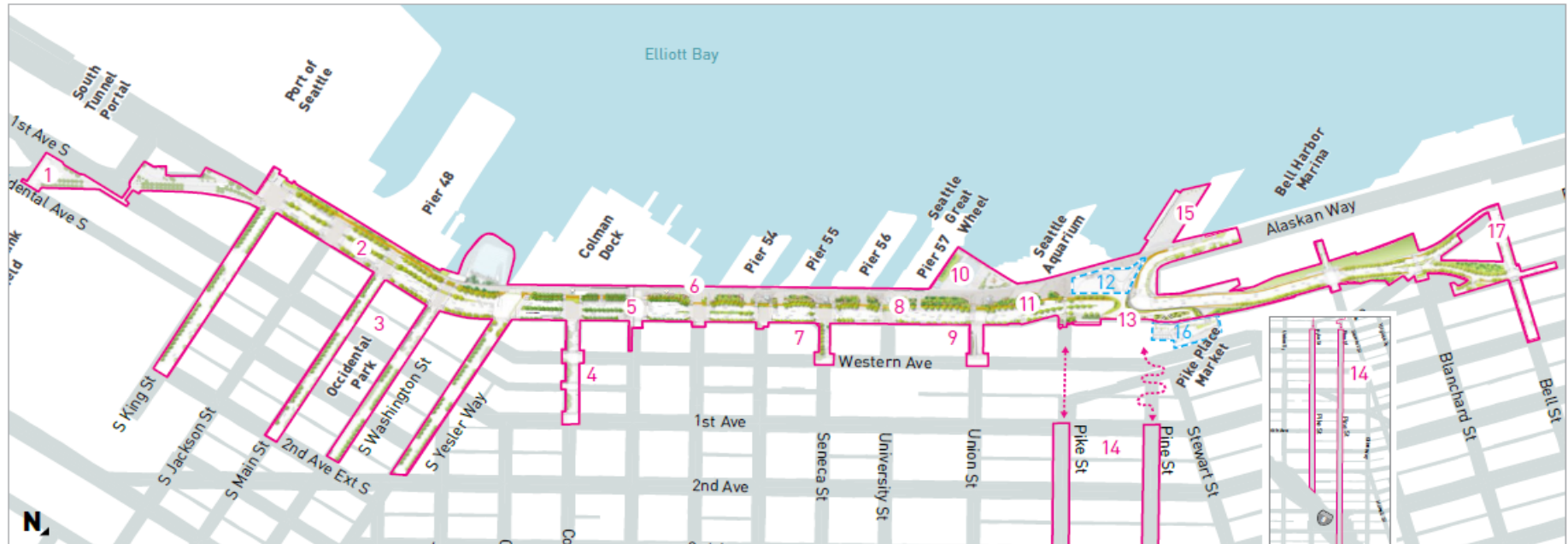


COMMUNITY ROUNDTABLE

Office of the Waterfront and Civic Projects
December 18, 2019



WATERFRONT SEATTLE PROGRAM



○ Waterfront Seattle Program Area

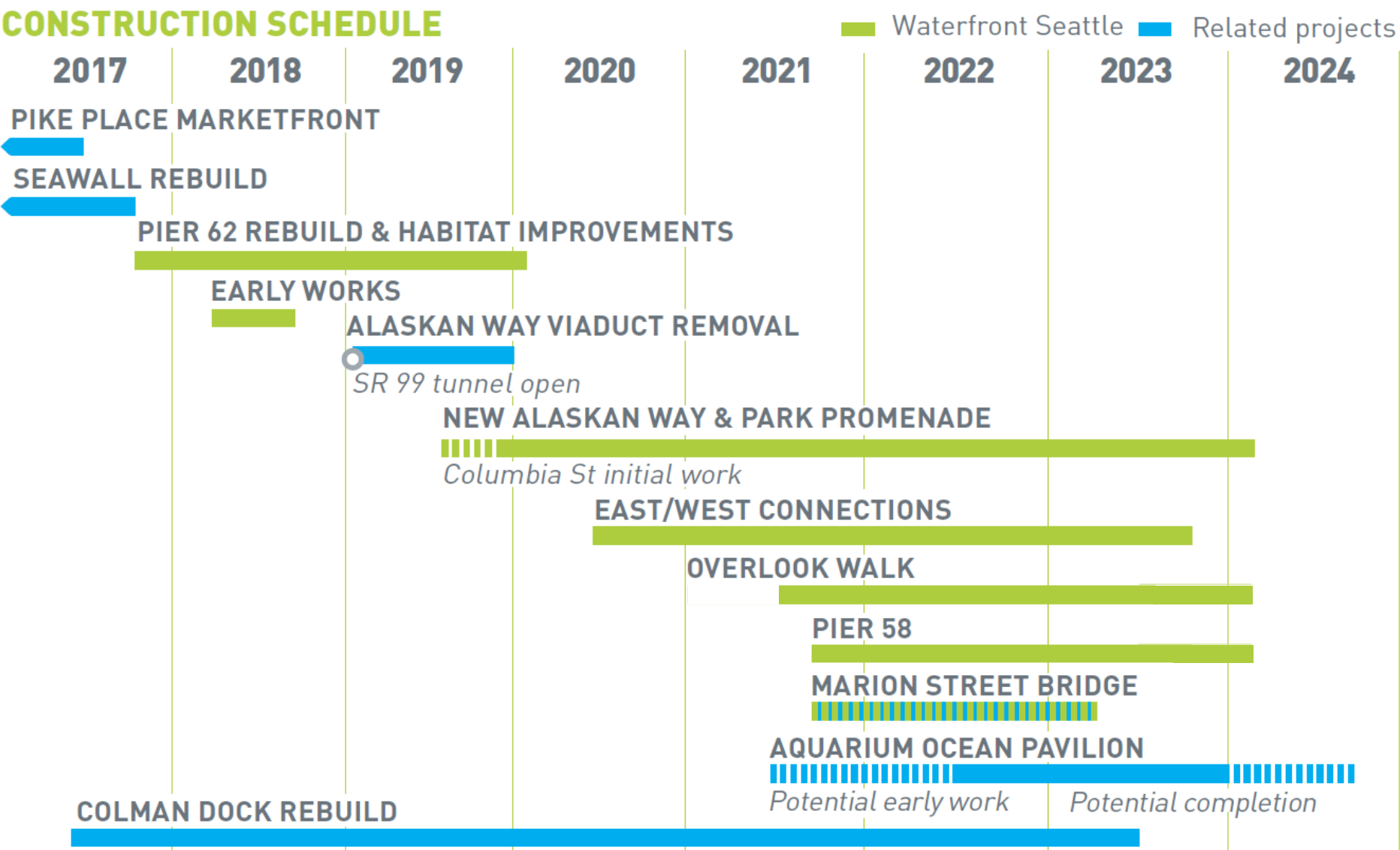
○ Related Projects

- 1 Railroad Way
- 2 Alaskan Way + Elliott Way
- 3 Pioneer Square Streets
- 4 Columbia Street
- 5 Marion Street Pedestrian Bridge
- 6 Seawall

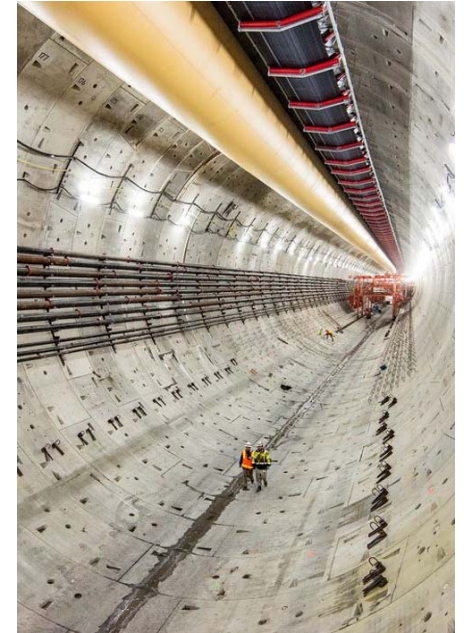
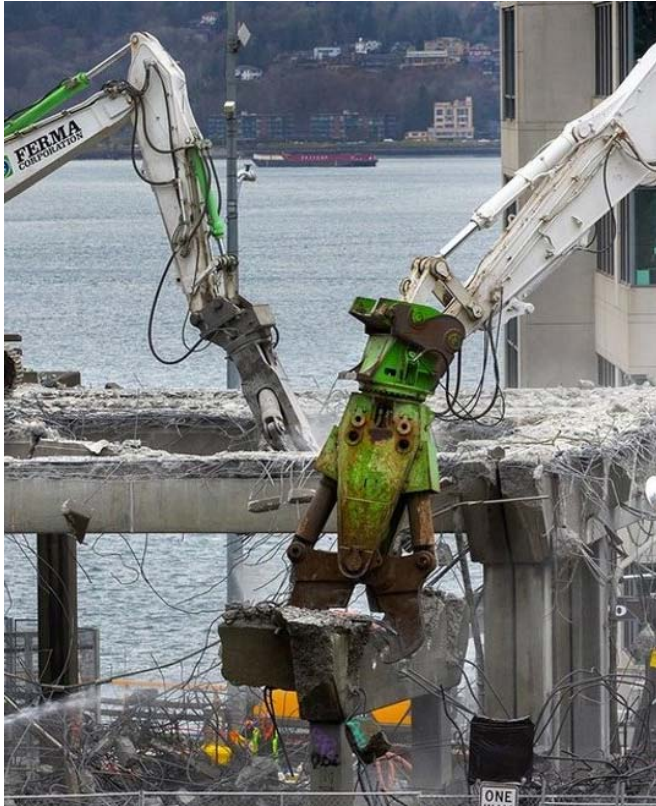
- 7 Seneca Street
- 8 Promenade
- 9 Union Street Elevator and Stairs
- 10 Waterfront Park
- 11 Protected bike lane
- 12 Seattle Aquarium expansion
- 13 Overlook Walk

- 14 Pike Pine Renaissance: Act One
- 15 Pier 62 Rebuild
- 16 Pike Place Market's MarketFront
- 17 Bell Street Park Extension

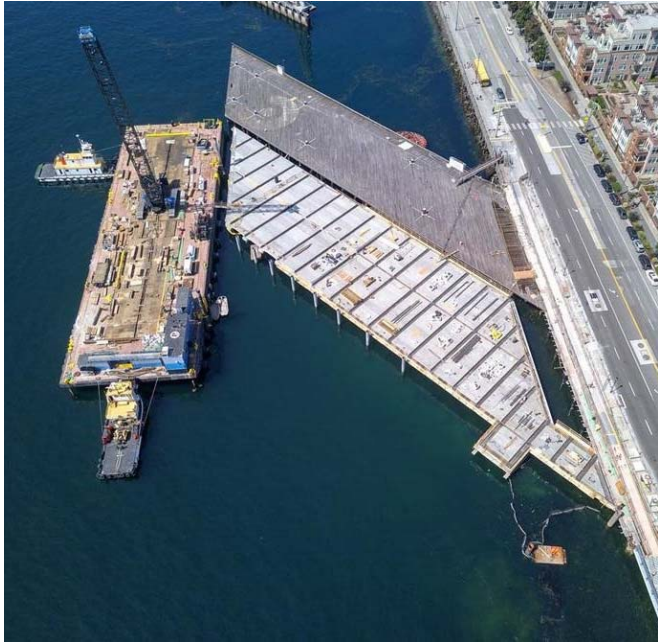
CONSTRUCTION SCHEDULE



NOTE: Construction dates subject to change pending ongoing construction sequencing evaluation and assumptions for all projects



SEAWALL, TUNNEL AND VIADUCT DEMO PROJECTS COMPLETE

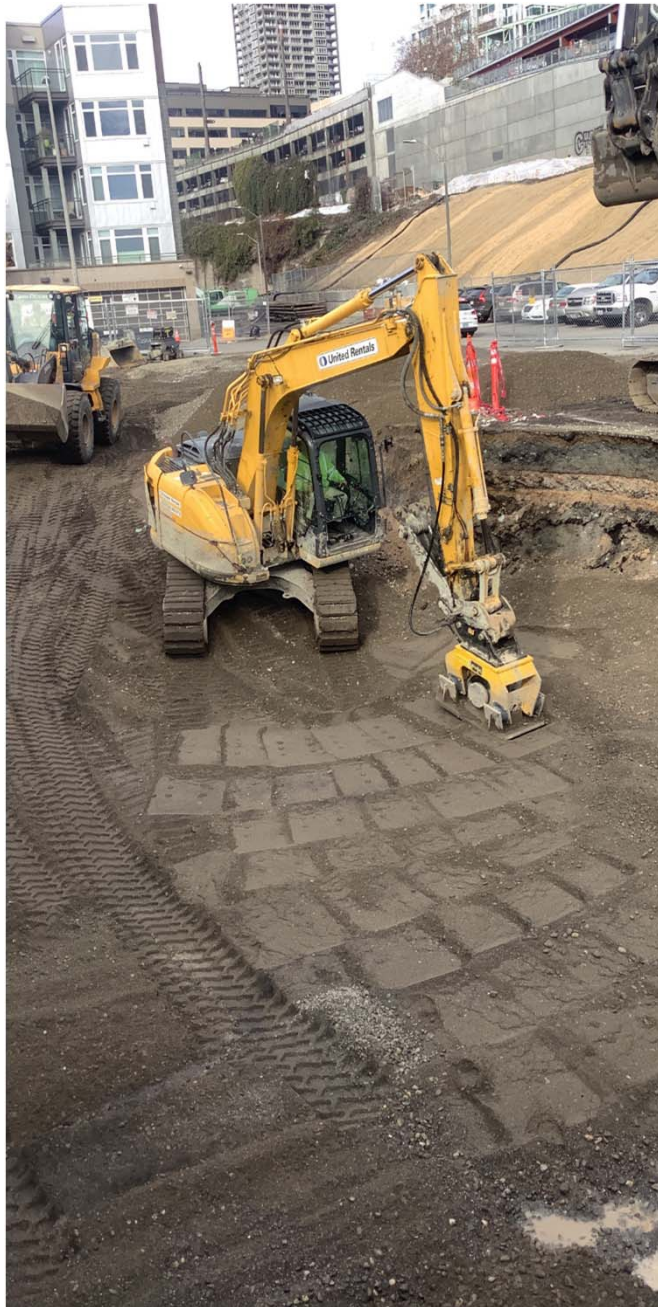


HABITAT BEACH AND PIER 62

CURRENT CONSTRUCTION – MAIN CORRIDOR

- Columbia Street work started in August 2019
- New Alaskan Way work started in November 2019
- Current Alaskan Way work between S. King to Pine streets
- Work zone expands north toward Bell Street as soon as WSDOT complete work in that area



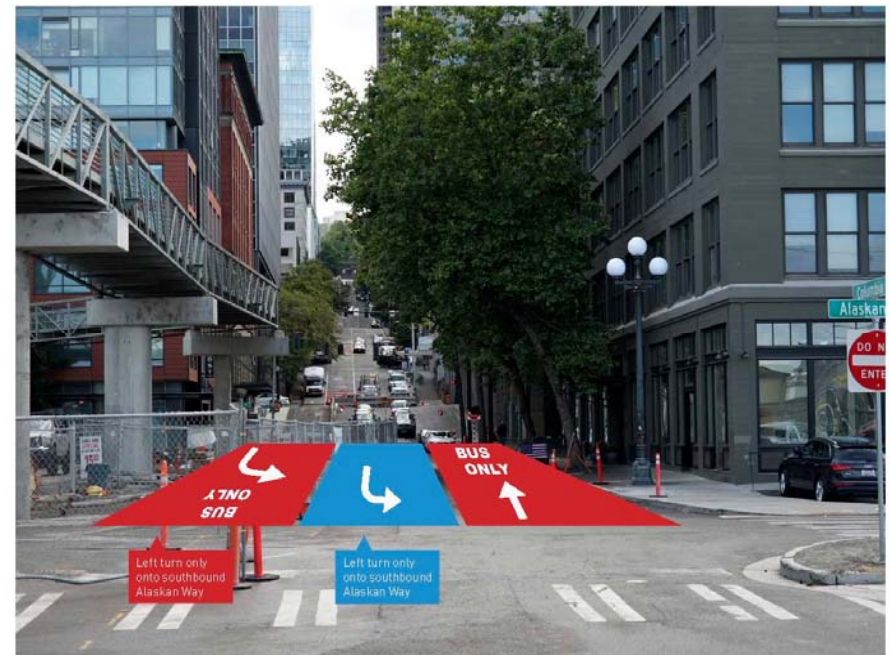


**ALASKAN WAY
CONSTRUCTION STARTED
IN NOVEMBR 2019**

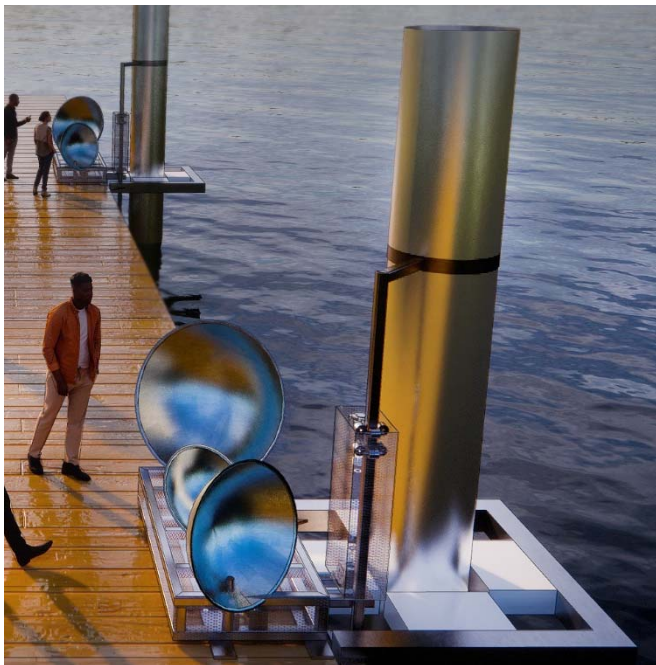
COLUMBIA STREET WILL OPEN TO TRANSIT IN EARLY 2020



1st Avenue to Western Avenue



Western Avenue to Alaskan Way



**PIER 62 OPENING
EARLY 2020!**

ALASKAN WAY



PROMENADE



PROMENADE



PROMENADE



UNION STREET



UNION STREET



OVERLOOK WALK



©LMN 2019





WMBE UTILIZATION DATA



PROGRAM WMBE UTILIZATION TO DATE	
WBE	13.1%
MBE	6.4%
WMBE goal	18.0%
WMBE ACTUAL UTILIZATION	19.5%

2019 WMBE UTILIZATION (thru 10/31/19)	
WBE	14.1%
MBE	11.7%
WMBE goal	18.0%
WMBE ACTUAL UTILIZATION	25.8%

WATERFRONT PARK OPERATIONS



- Partnership with non-profit “Friends” organization:
 - \$4.8M Annual City funding for maintenance
 - \$1-\$2M private fundraising for programming and activation
- Free public events year round
- Dedicated, specialized maintenance team
- Oversight Committee to ensure accountability



Contact Waterfront Seattle:

info@waterfrontseattle.org

206.499.8040

waterfrontseattle.org



Contact Friends:

info@friendsofwaterfrontseattle.org

friendsofwaterfrontseattle.org

Visit Friends!

Waterfront Space

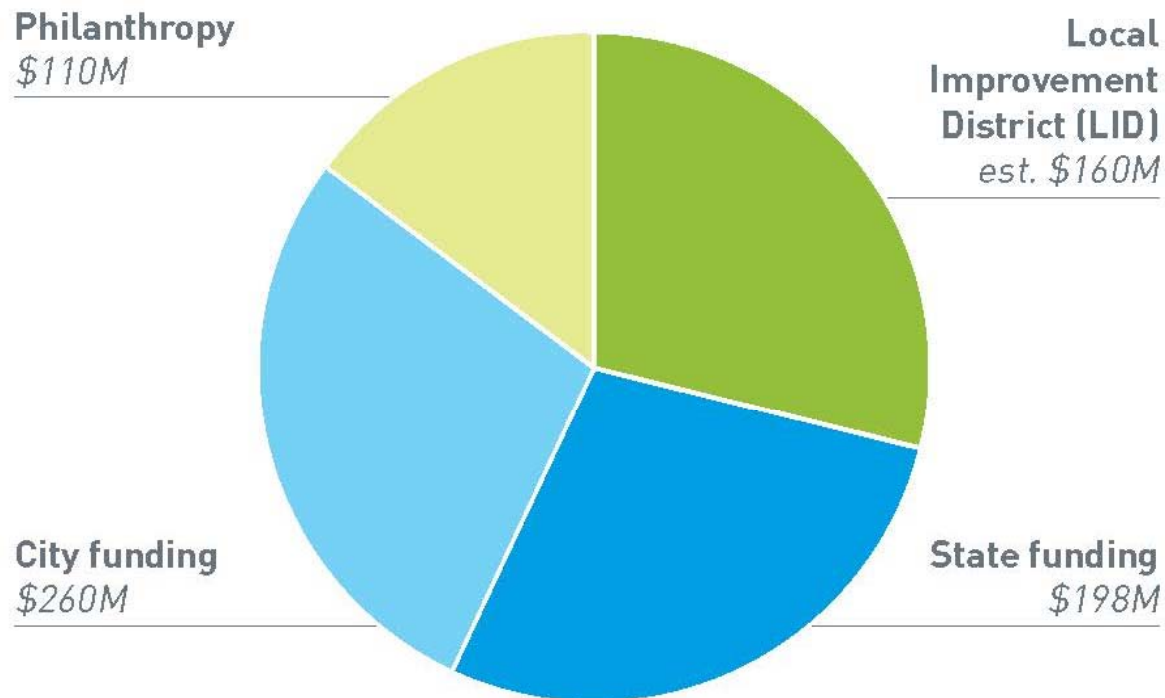
1400 Western Ave

Wed-Fri, 12-5pm

WATERFRONT SEATTLE FUNDING



FUNDING



TOTAL= \$728M

*Does not include WSDOT-funded Marion Street Pedestrian Bridge over Alaskan Way (pending future agreement)