



# **WATERFRONT SEATTLE**

## **November 20, 2019**



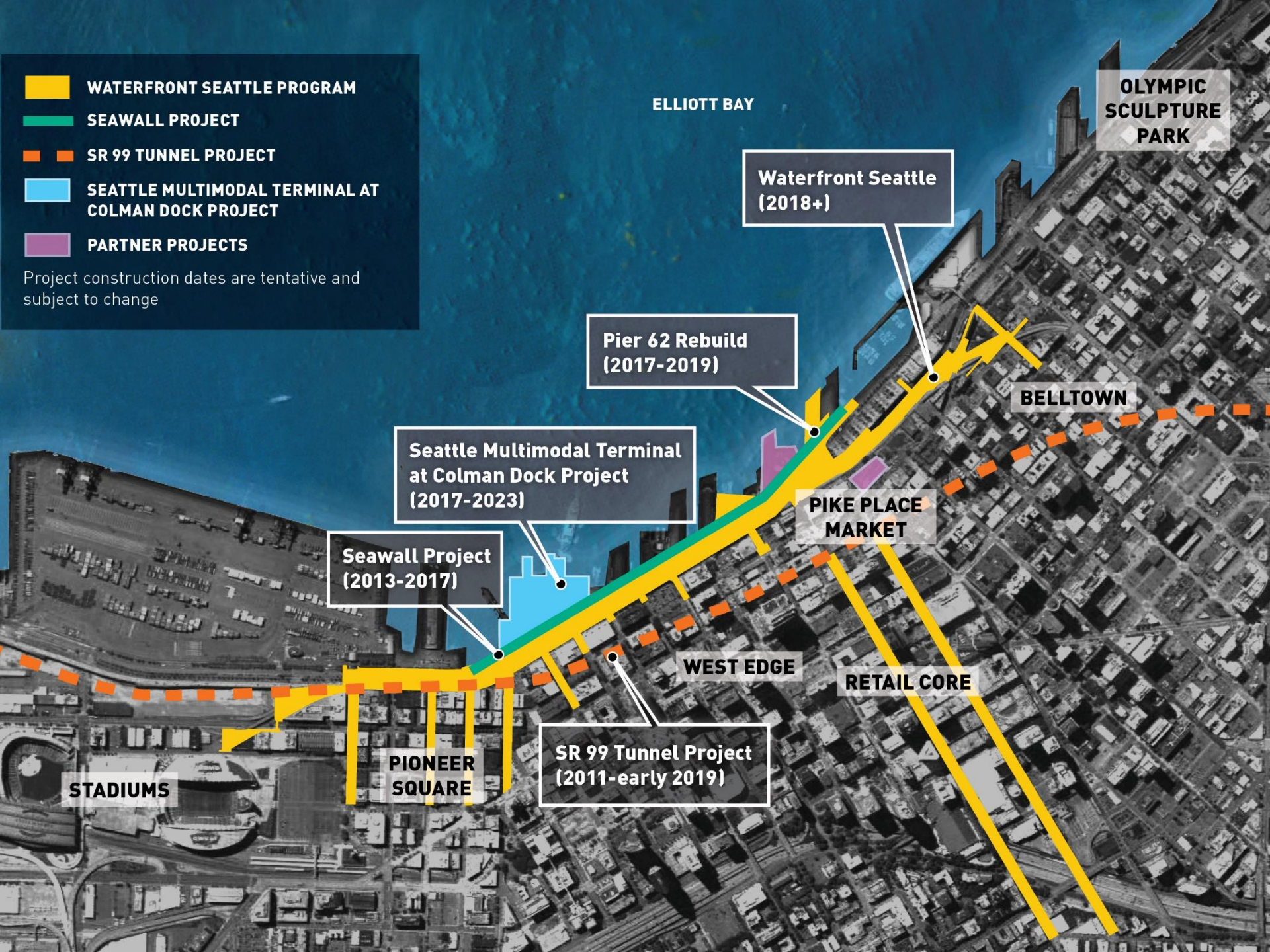






-  **WATERFRONT SEATTLE PROGRAM**
-  **SEAWALL PROJECT**
-  **SR 99 TUNNEL PROJECT**
-  **SEATTLE MULTIMODAL TERMINAL AT COLMAN DOCK PROJECT**
-  **PARTNER PROJECTS**

Project construction dates are tentative and subject to change



ELLIOTT BAY

OLYMPIC  
SCULPTURE  
PARK

Waterfront Seattle  
(2018+)

Pier 62 Rebuild  
(2017-2019)

Seattle Multimodal Terminal  
at Colman Dock Project  
(2017-2023)

Seawall Project  
(2013-2017)

PIKE PLACE  
MARKET

BELLTOWN

WEST EDGE

RETAIL CORE

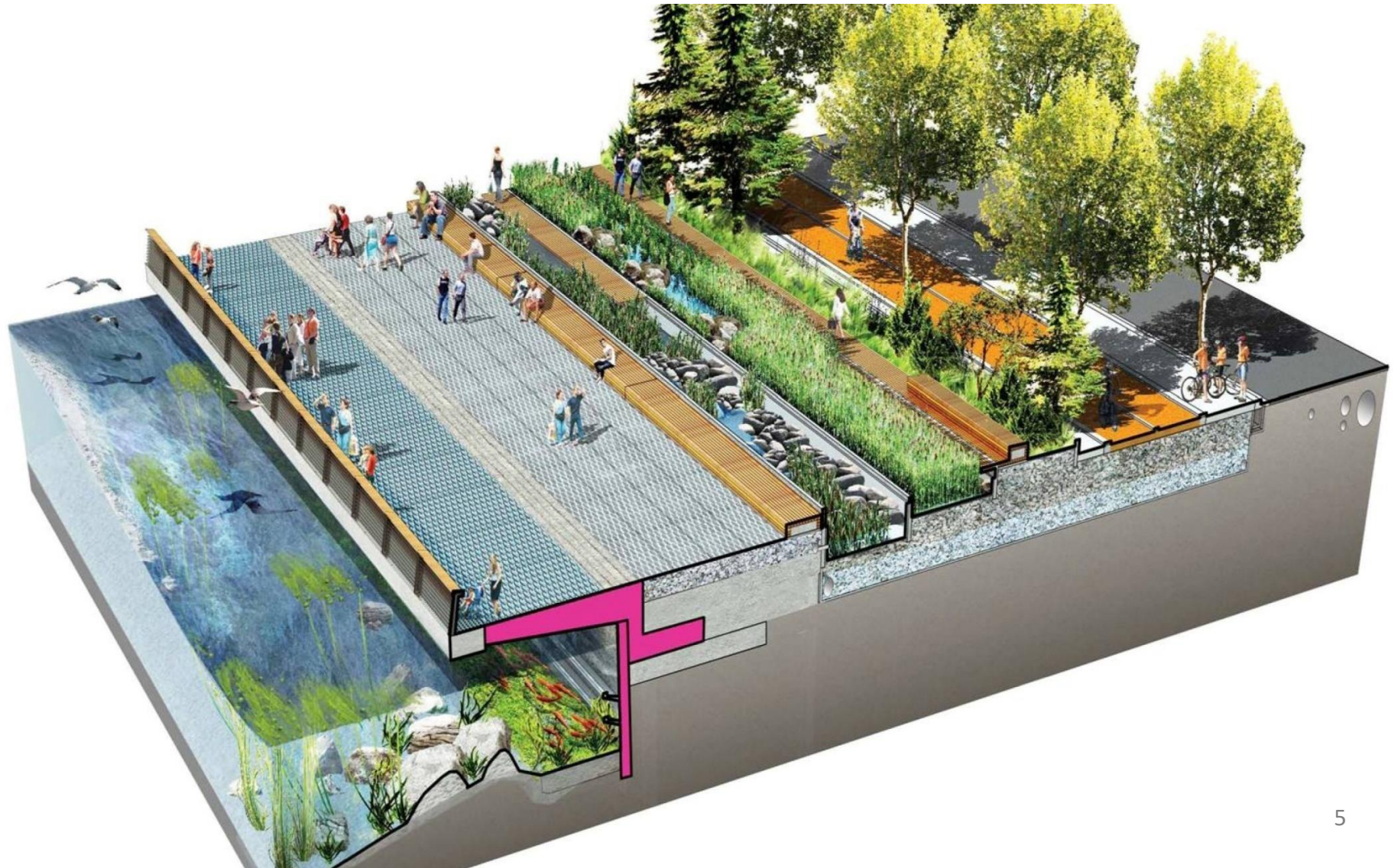
SR 99 Tunnel Project  
(2011-early 2019)

PIONEER  
SQUARE

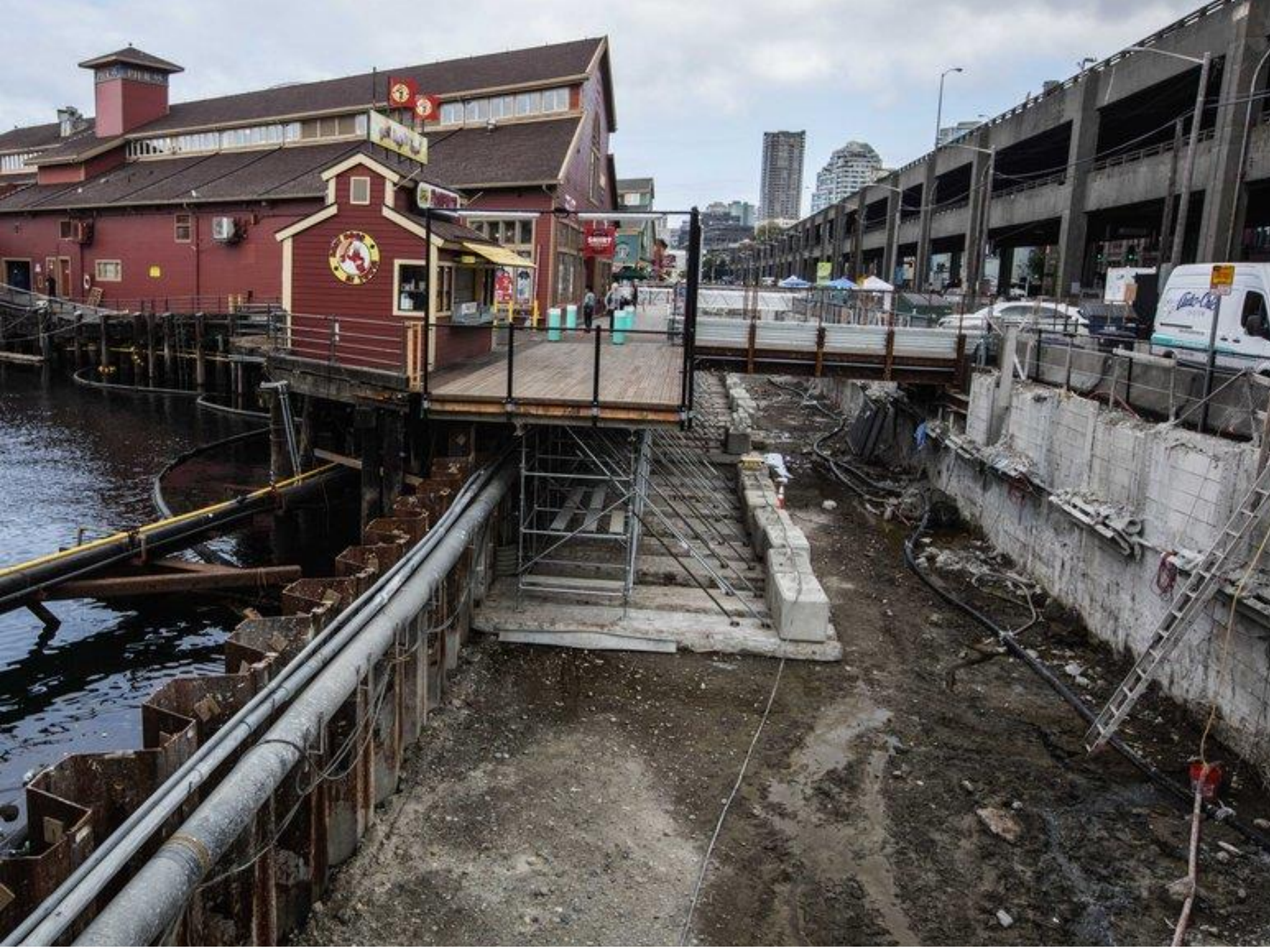
STADIUMS



# SEAWALL AND PROMENADE











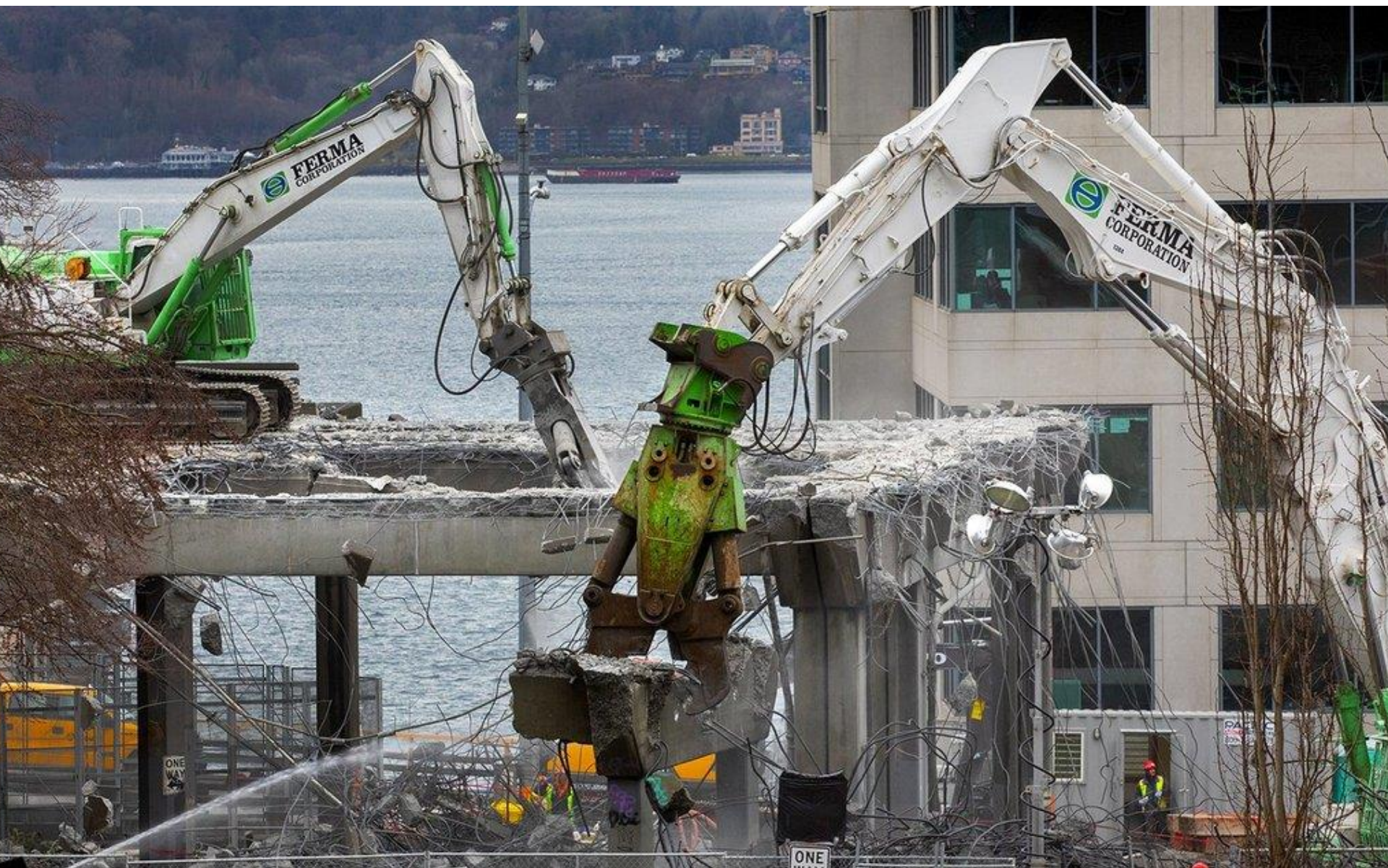




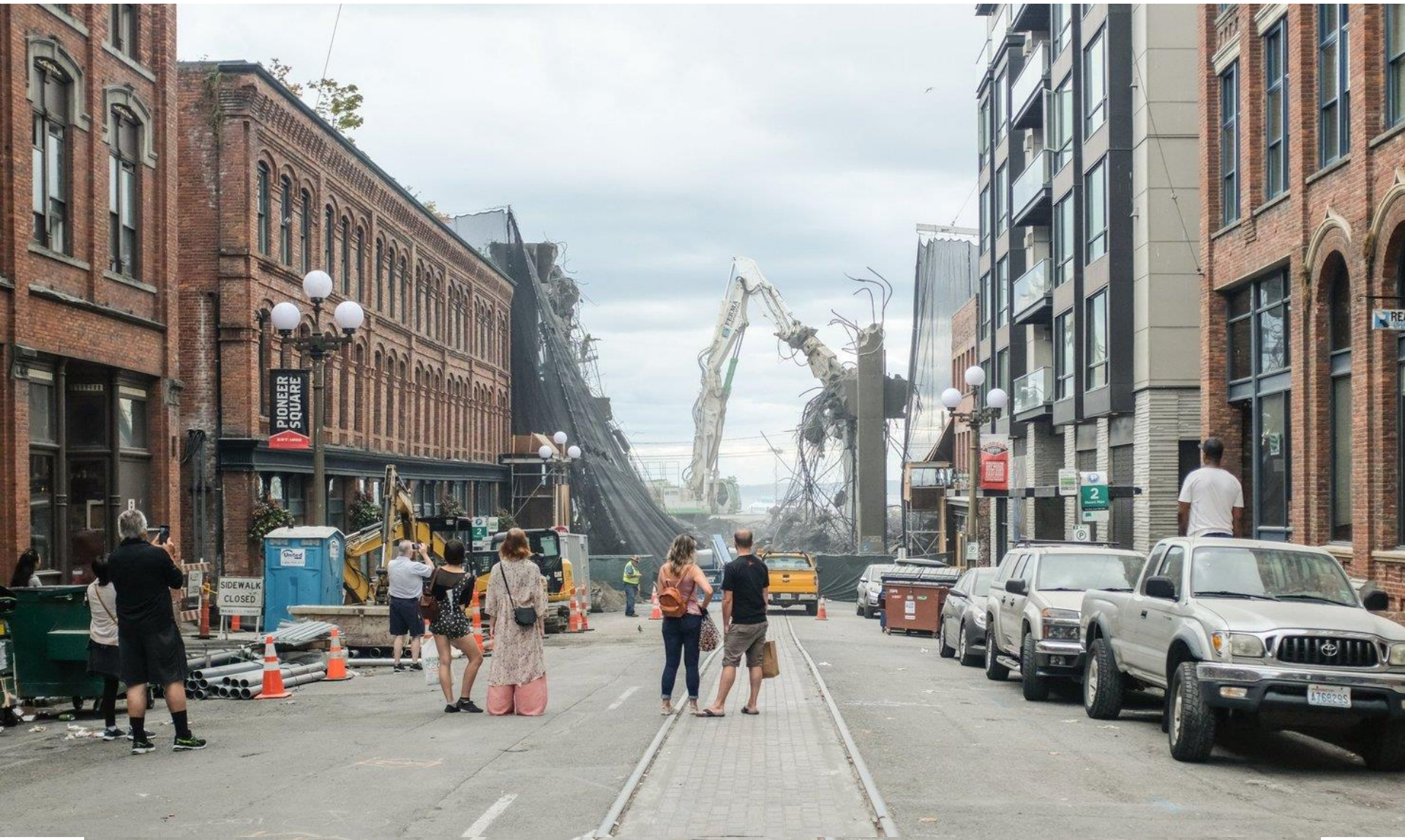
4110

ARÉI















# WATERFRONT SEATTLE PROGRAM

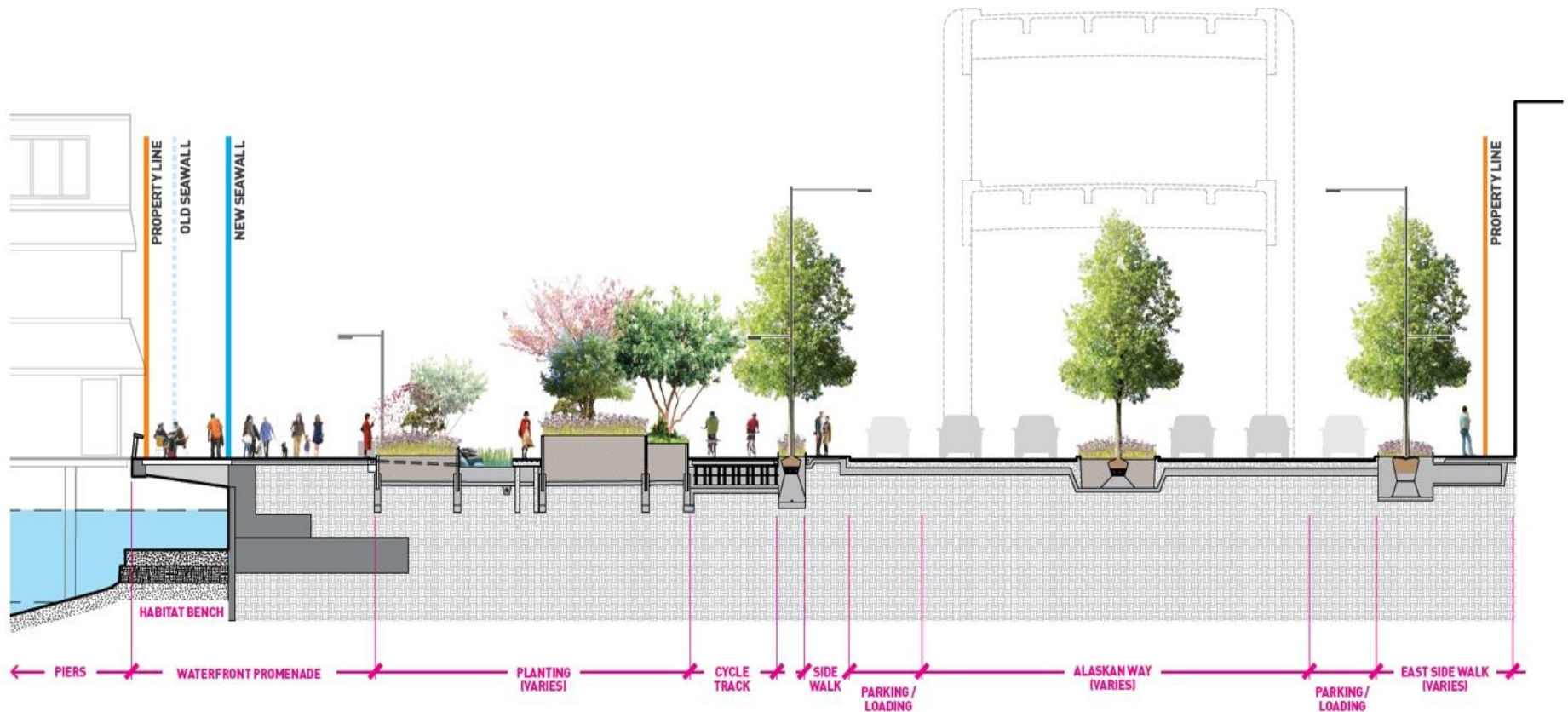


- Waterfront Seattle Program Area
- Related Projects

- |                                   |                                    |                                    |
|-----------------------------------|------------------------------------|------------------------------------|
| 1 Railroad Way                    | 7 Seneca Street                    | 14 Pike Pine Renaissance: Act One  |
| 2 Alaskan Way + Elliott Way       | 8 Promenade                        | 15 Pier 62 Rebuild                 |
| 3 Pioneer Square Streets          | 9 Union Street Elevator and Stairs | 16 Pike Place Market's MarketFront |
| 4 Columbia Street                 | 10 Waterfront Park                 | 17 Bell Street Park Extension      |
| 5 Marion Street Pedestrian Bridge | 11 Protected bike lane             |                                    |
| 6 Seawall                         | 12 Seattle Aquarium expansion      |                                    |
|                                   | 13 Overlook Walk                   |                                    |



# TYPICAL CROSS SECTION





# KING TO COLUMBIA





# PIONEER SQUARE BEACH





# EAST-WEST CONNECTIONS: MAIN ST





# COLMAN DOCK TRANSIT HUB



ART BY OSCAR TUAZON



# PIER PROMENADE

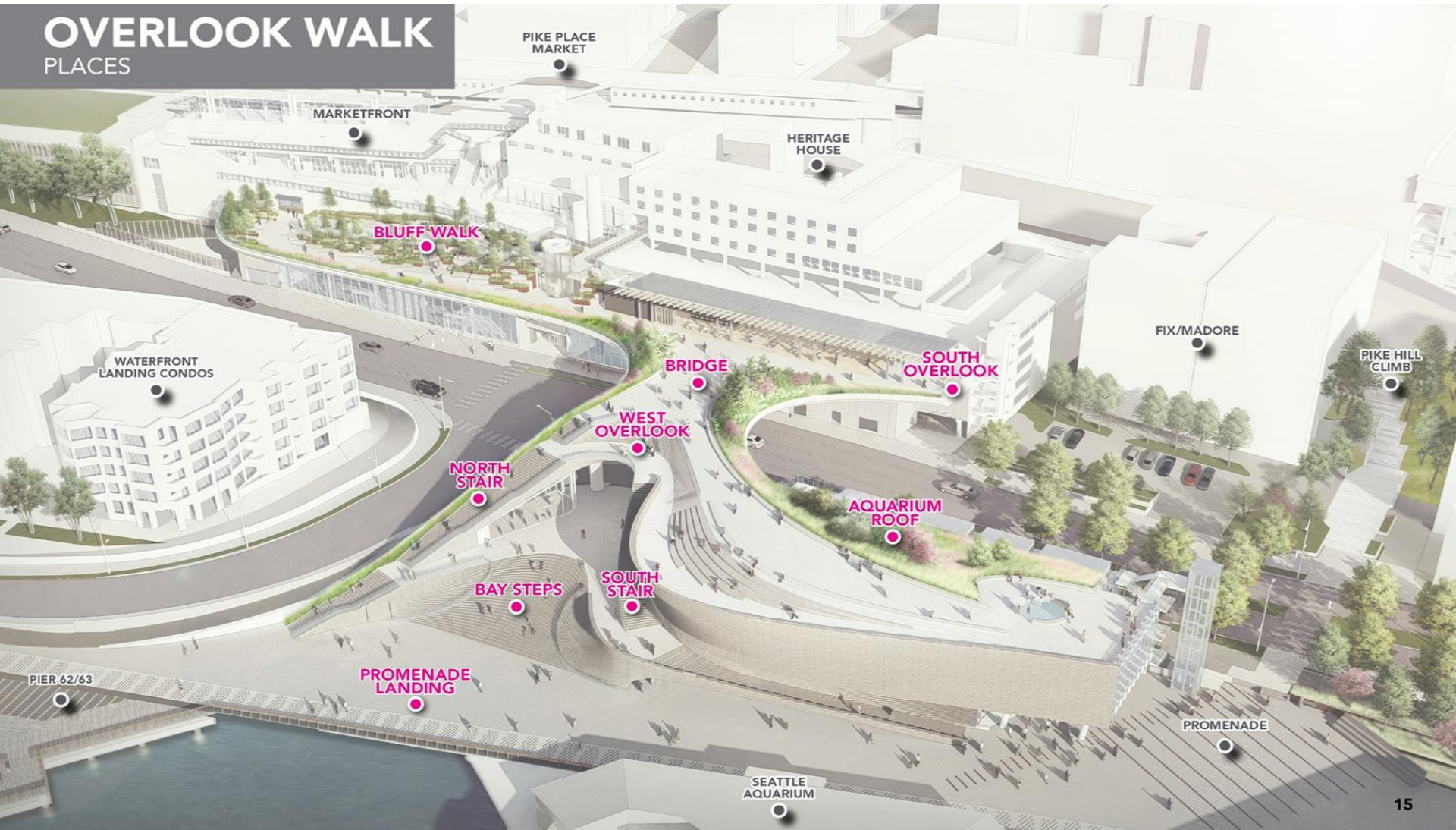




# OVERLOOK WALK



## OVERLOOK WALK PLACES















SEATTLE AQUARIUM



# PIER 62 – OPENING EARLY 2020





# WATERFRONT PARK OPERATIONS



- Partnership with non-profit “Friends” organization:
  - \$4.8M Annual City funding for maintenance
  - \$1-\$2M private fundraising for programming and activation
- Free public events year round
- Dedicated, specialized maintenance team
- Oversight Committee to ensure accountability