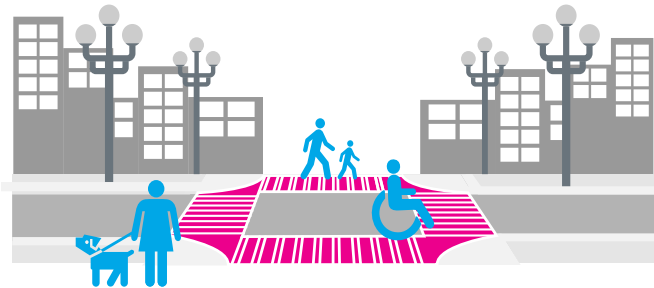
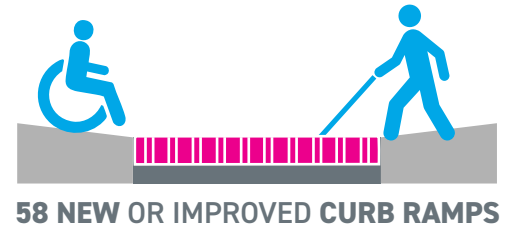
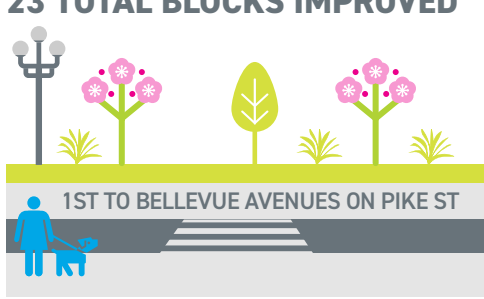


# PIKE PINE IMPROVEMENTS



## NEW OR IMPROVED FEATURES FOR PEOPLE WALKING & ROLLING

23 TOTAL BLOCKS IMPROVED

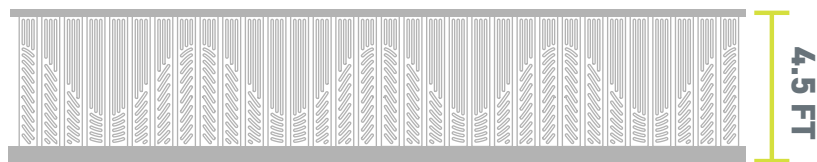


17 UNIQUELY COLORED AND TEXTURED CROSSWALKS FOR IMPROVED ACCESSIBILITY

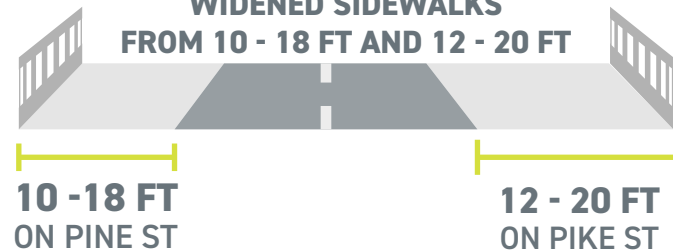


## BRIDGES OVER I-5 ON PIKE AND PINE STREETS

490 FT OF NEW AND TALLER RAILINGS WITH LIGHTING



WIDENED SIDEWALKS FROM 10 - 18 FT AND 12 - 20 FT



## IMPROVED HABITAT & GREENERY



OVER 1400 NEW PLANTS IN NEW GREEN SPACE BETWEEN THE ROAD AND PEOPLE WALKING AND BIKING



[WATERFRONTSEATTLE.ORG](http://WATERFRONTSEATTLE.ORG)

To learn more about the unique design and features at Pike Pine visit our website.



WaterfrontSEA



Waterfrontsea



WaterfrontSeattle



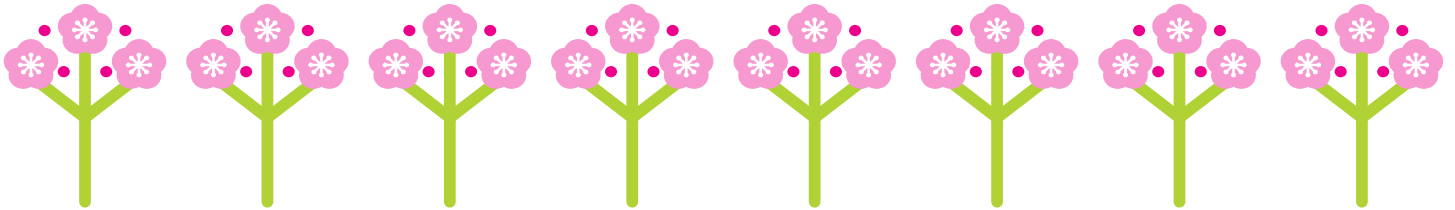
# PIKE PINE IMPROVEMENTS



## 100 BLOCK OF PIKE ST



PIKE ST BETWEEN 1ST AND 2ND AVENUES WAS CONVERTED TO A **CURBLESS, SHARED STREET** DESIGNED TO SUPPORT ACTIVITIES LIKE **OUTDOOR DINING, FESTIVALS AND RELAXATION**



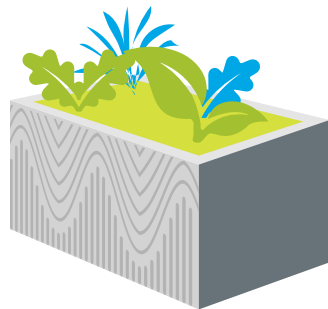
**8 NEW CHERRY TREES** PLANTED WITH A COMMEMORATIVE PLAQUE **HONORING SEATTLE'S TIES TO JAPAN**

## ARTWORK

### ARTWORK BY DEREK BRUNO AND GAGE HAMILTON FEATURED ON:



**51 PROTECTED BIKE LANE BUFFERS**



**96 PLANTER BOXES**



**BRIDGE RAILINGS OVER I-5 ON PIKE AND PINE STREETS**



**VISIT OUR WEBSITE TO LEARN MORE**



**WATERFRONTSEATTLE.ORG**

To learn more about the unique design and features at Pike Pine visit our website.



WaterfrontSEA



Waterfrontsea



WaterfrontSeattle

