



BELOW GROUND UTILITY WORK FOR 5G ON ALASKAN WAY BETWEEN S KING AND COLUMBIA STREETS

As early as **Monday, November 27**, we will begin below-ground utility work on the east side of Alaskan Way S between S King and Columbia streets to support the expansion of 5G service in three locations. Work will move south to north, one block at a time, beginning between S King and S Jackson streets. Work is anticipated to take approximately one month at each location and continue into early 2024.

There is a need and expectation for fast and reliable mobile technology. As a result, wireless carriers have created “small cells,” which are low-powered cellular radio access nodes that provide new available spectrums, to increase the network capacity in places with a lot of online traffic. These small cells will be installed on large poles along the waterfront corridor.

Installation of 5G poles is not a part of Waterfront Seattle improvements and will be conducted by carriers. For more information about 5G in Seattle, we encourage you to take a look at the [City of Seattle 5G and Small Wireless Facilities \(SWF\) on Seattle Poles FAQ](#).

WHAT TO EXPECT ON THE EAST SIDE OF ALASKAN WAY BETWEEN S KING AND COLUMBIA STREETS

WORK ZONES:

- Northbound Alaskan Way, one block at a time moving south to north, between:
 - S King and S Jackson streets
 - S Main and S Washington streets
 - Yesler Way and Columbia St
- Work is expected to take approximately one month at each location

SCHEDULE AND HOURS:

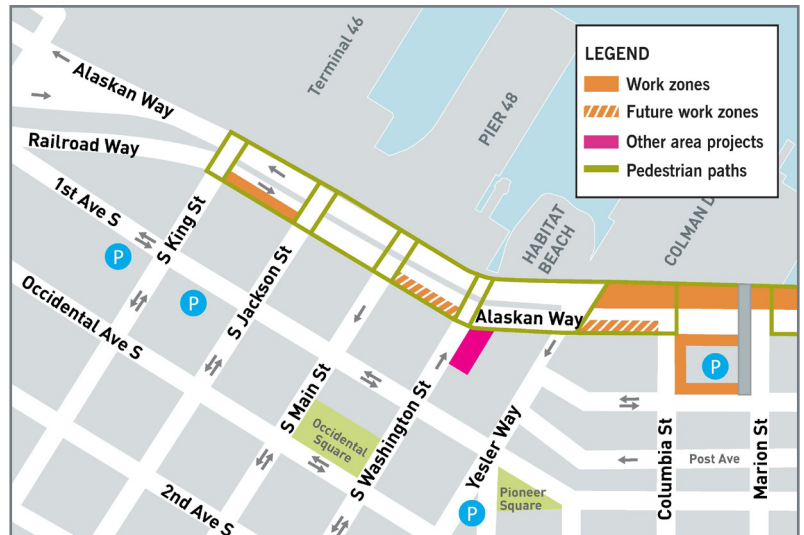
- Work hours typically Monday through Friday, 7 AM to 5 PM
- Any necessary overnight or weekend work will be communicated in advance

PARKING AND LOADING ZONES:

- Parking restrictions will be in place between S King and S Jackson streets and between S Main and S Washington streets

EQUIPMENT AND NOISE:

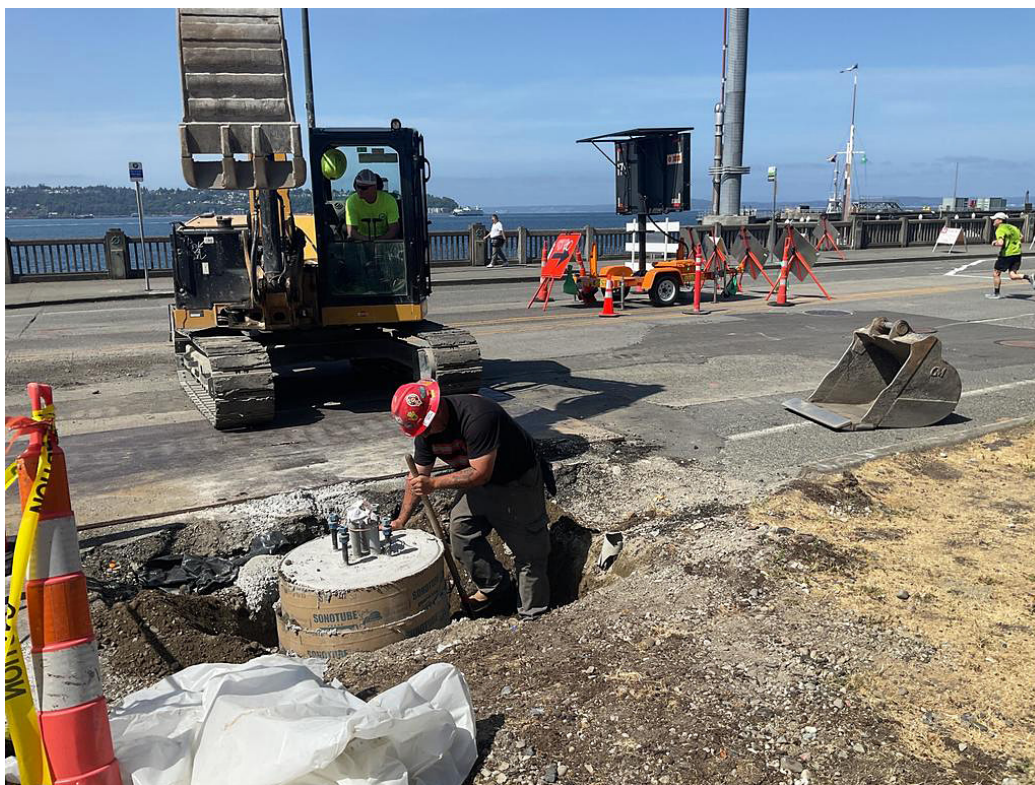
- Expect construction equipment and vehicles moving in and out of the work zone.
- Construction trucks and equipment may be noisy, with the most significant noise coming from breaking and removing roadway pavement



Map of work zones

PEDESTRIAN AND VEHICLE ACCESS:

- Lane closures on Alaskan Way, 24/7, one block at a time, moving south to north:
 - Reduced to two northbound lanes for vehicles and buses between S King and S Jackson streets
 - Reduced to two northbound lanes for vehicles and buses between S Main and S Washington streets
 - Northbound lane closures between Yesler Way and Columbia St
- Pedestrian access will be maintained at all times
- Access to businesses and residences will be maintained at all times
- Bus stop and route impacts will be shared by King County Metro. Check out their [service advisories](#) for more information
- Vehicle access to Colman Dock ferry terminal via queuing lanes will be maintained at all times



5G pole foundation installation on Alaskan Way near Pine St earlier this year.



SIGN UP FOR CONSTRUCTION UPDATE EMAILS

Sign up for our construction update email list at waterfrontseattle.org/construction-updates-mailing-list



VISIT DOWNTOWNSEATTLEPARKING.ORG

Visit downtownseattleparking.org to find rates, hours and directions to thousands of parking spaces in the area.



WATERFRONTCONSTRUCTION.ORG

The Waterfront is going to be a busy place over the next several years. Visit waterfrontconstruction.org for more information on multiple projects compiled all in one place.

QUESTIONS?

If you have questions or would like more information about the Waterfront Seattle program, please call, email or visit our website.

206.499.8040

info@waterfrontseattle.org

waterfrontseattle.org