

RESTROOM CONCEPT DESIGN

SEATTLE DESIGN COMMISSION

DECEMBER 12TH, 2022



INTRODUCTION

WATERFRONT PROGRAM

- EXISTING RESTROOMS
- PROPOSED RESTROOM

RAILROAD WAY

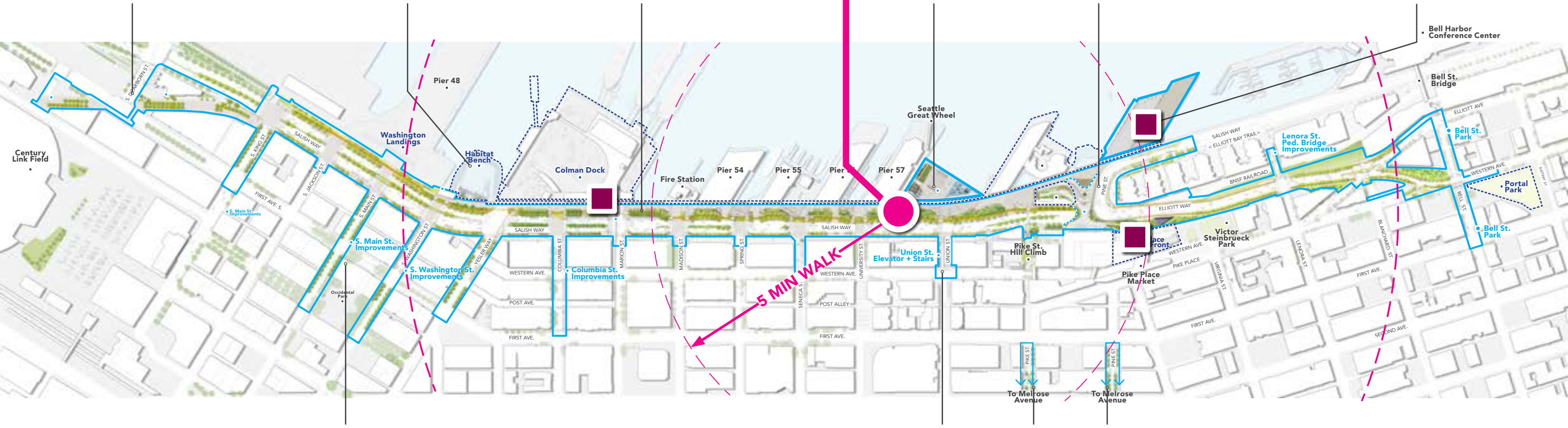
EBSP

MAIN CORRIDOR

PIER 58

OVERLOOK WALK

PIER 62



RESTROOM +
CONCIERGE

5 MIN WALK

PIONEER SQUARE
EAST-WEST STREETS

UNION STREET




PIKE /PINE
CORRIDOR

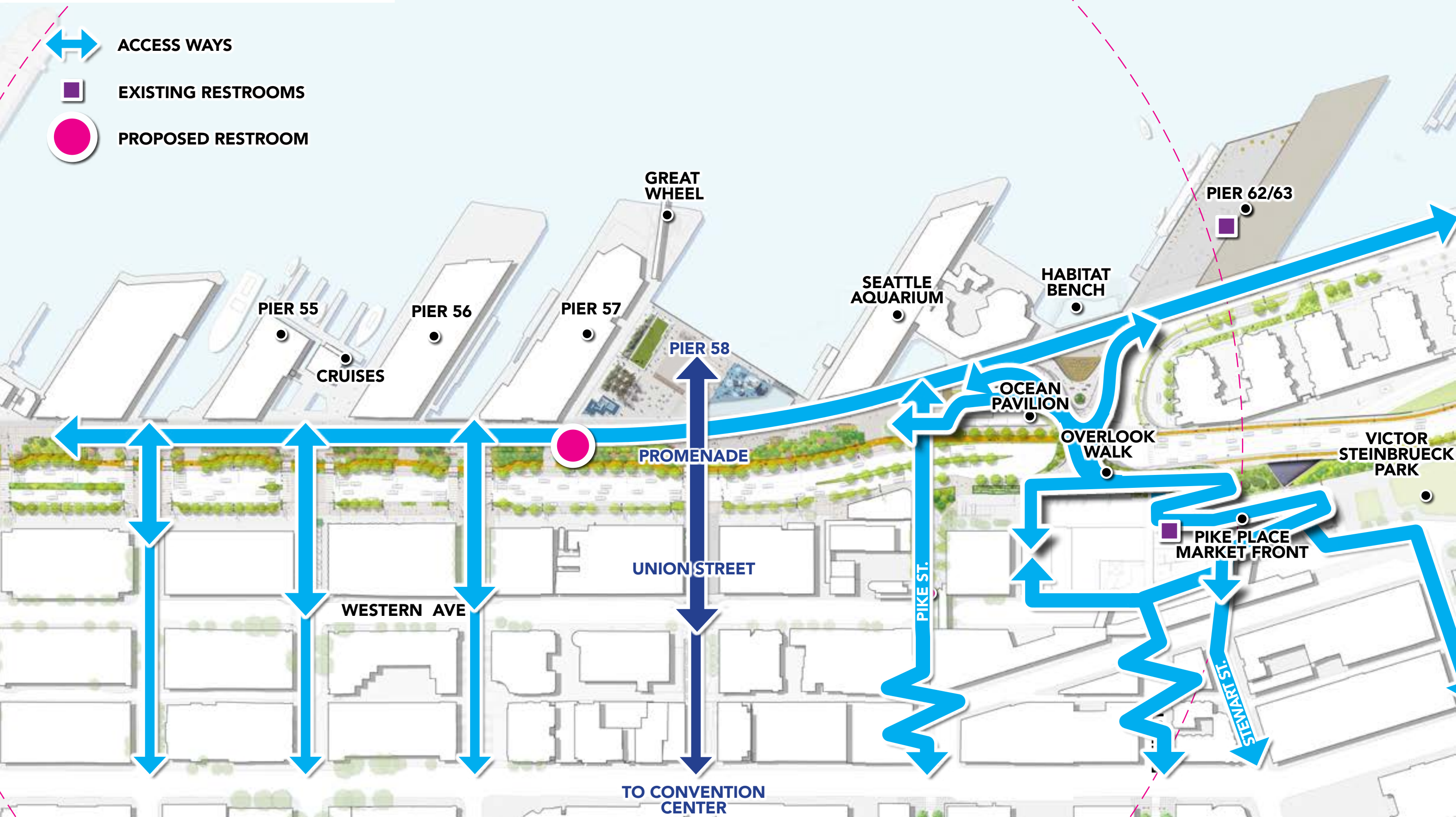
To Melrose Avenue

To Melrose Avenue

INTRODUCTION

CENTRAL PUBLIC OPEN SPACE

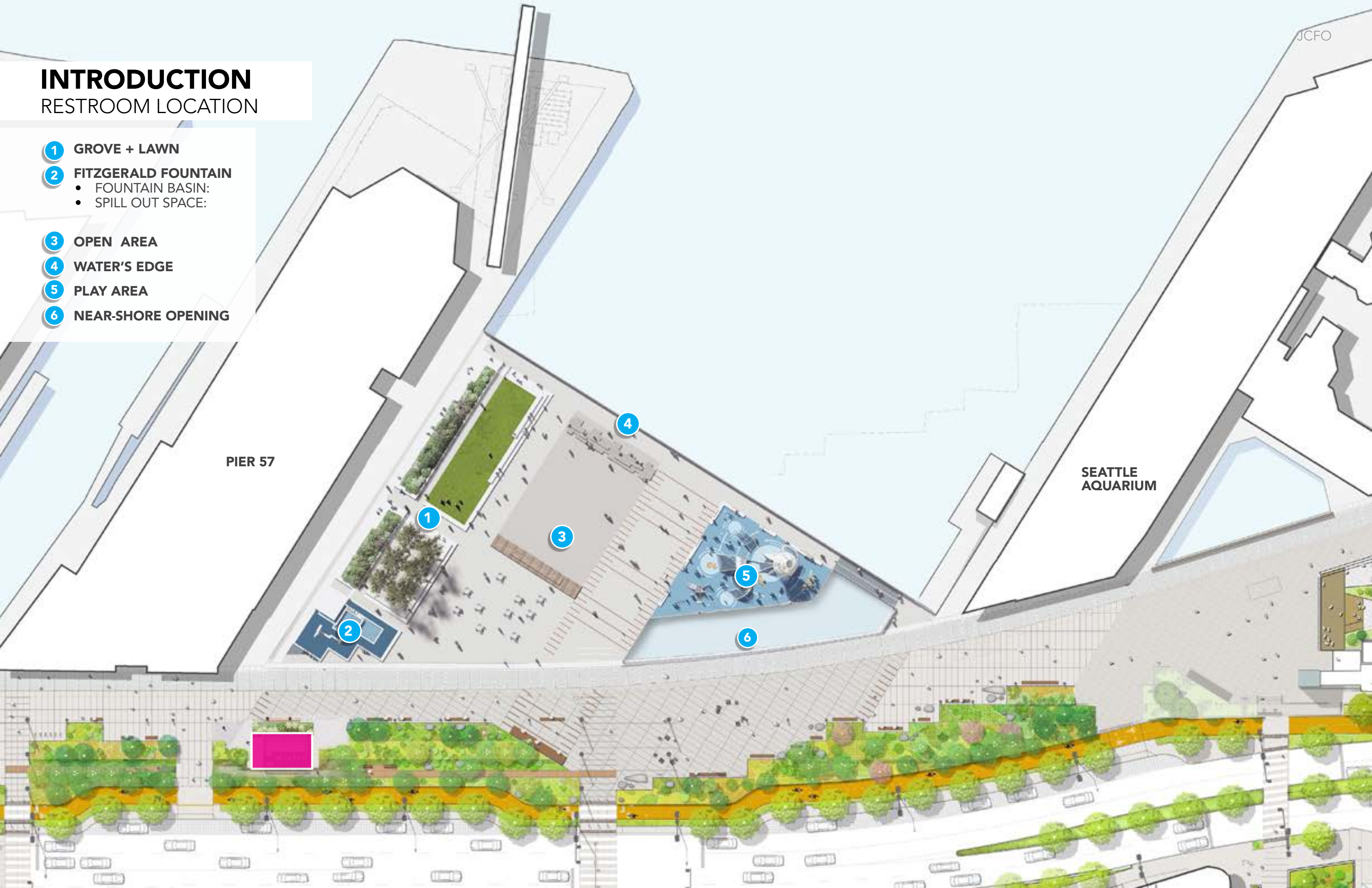
-  ACCESS WAYS
-  EXISTING RESTROOMS
-  PROPOSED RESTROOM



INTRODUCTION

RESTROOM LOCATION

- 1 GROVE + LAWN
- 2 FITZGERALD FOUNTAIN
 - FOUNTAIN BASIN:
 - SPILL OUT SPACE:
- 3 OPEN AREA
- 4 WATER'S EDGE
- 5 PLAY AREA
- 6 NEAR-SHORE OPENING



INTRODUCTION

PROMENADE



PROMENADE BOARDWALK



SOCIAL INTERSECTIONS



UNION STREET IMPROVEMENTS



PUBLIC ART

GOALS

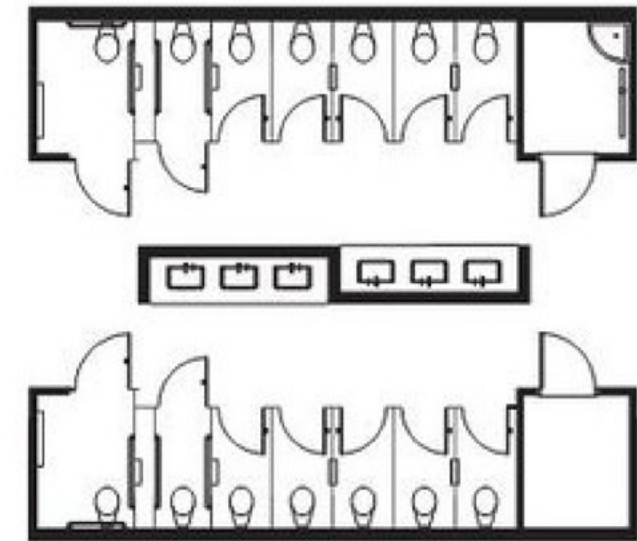
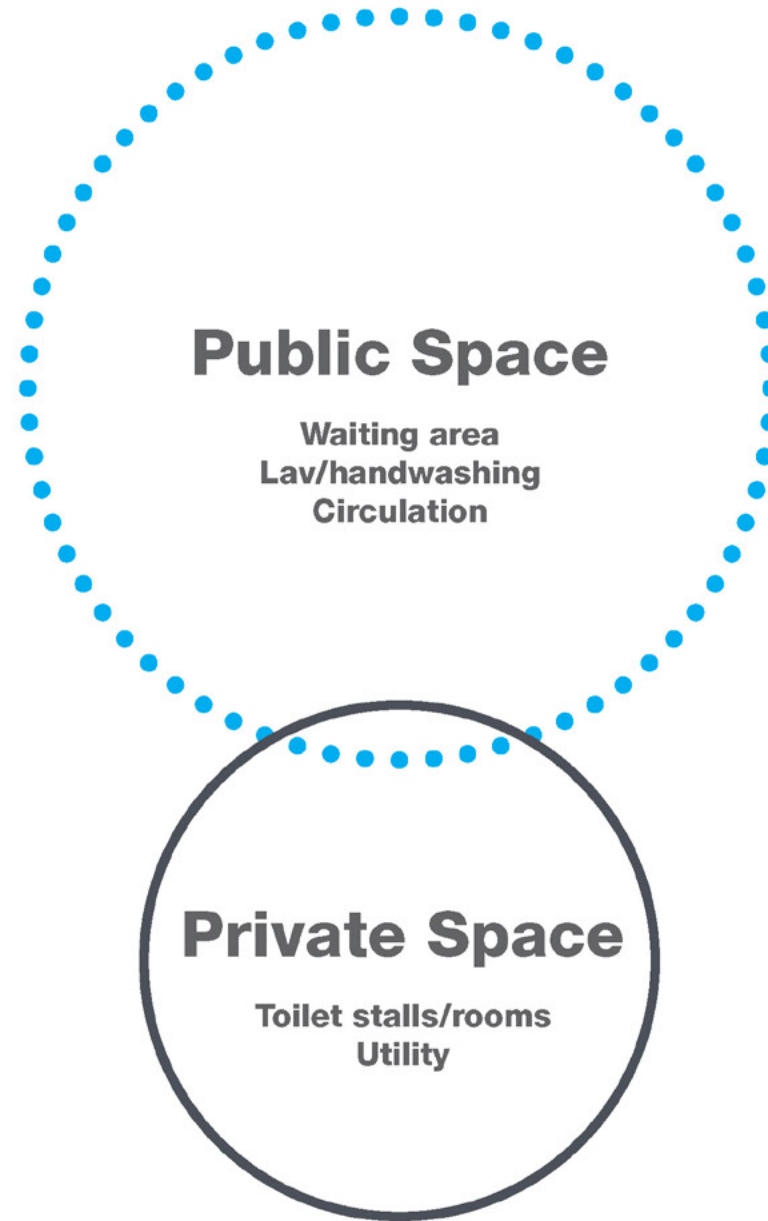
GOALS

DESIGN BRIEF

- Provide a welcoming, safe and clean facility, with attending personnel (conciierge) during open hours, to enhance the visitor experience for the diverse users of the Waterfront.
- Ensure that the facility serves visitors of all ages and abilities.
- Express the unique character of the waterfront as well as the historic and cultural background of the site.
- Provide a fun, relaxing atmosphere for families while waiting, and provide visibility to Pier 58 and especially the Play Area.
- Take advantage of technological solutions to provide hands-free door and fixture operations. Consider automatic cleaning and sanitizing systems that could be operated multiple times per day to reassure users of overall cleanliness and care.

GOALS

PUBLIC AND PRIVATE SPACE



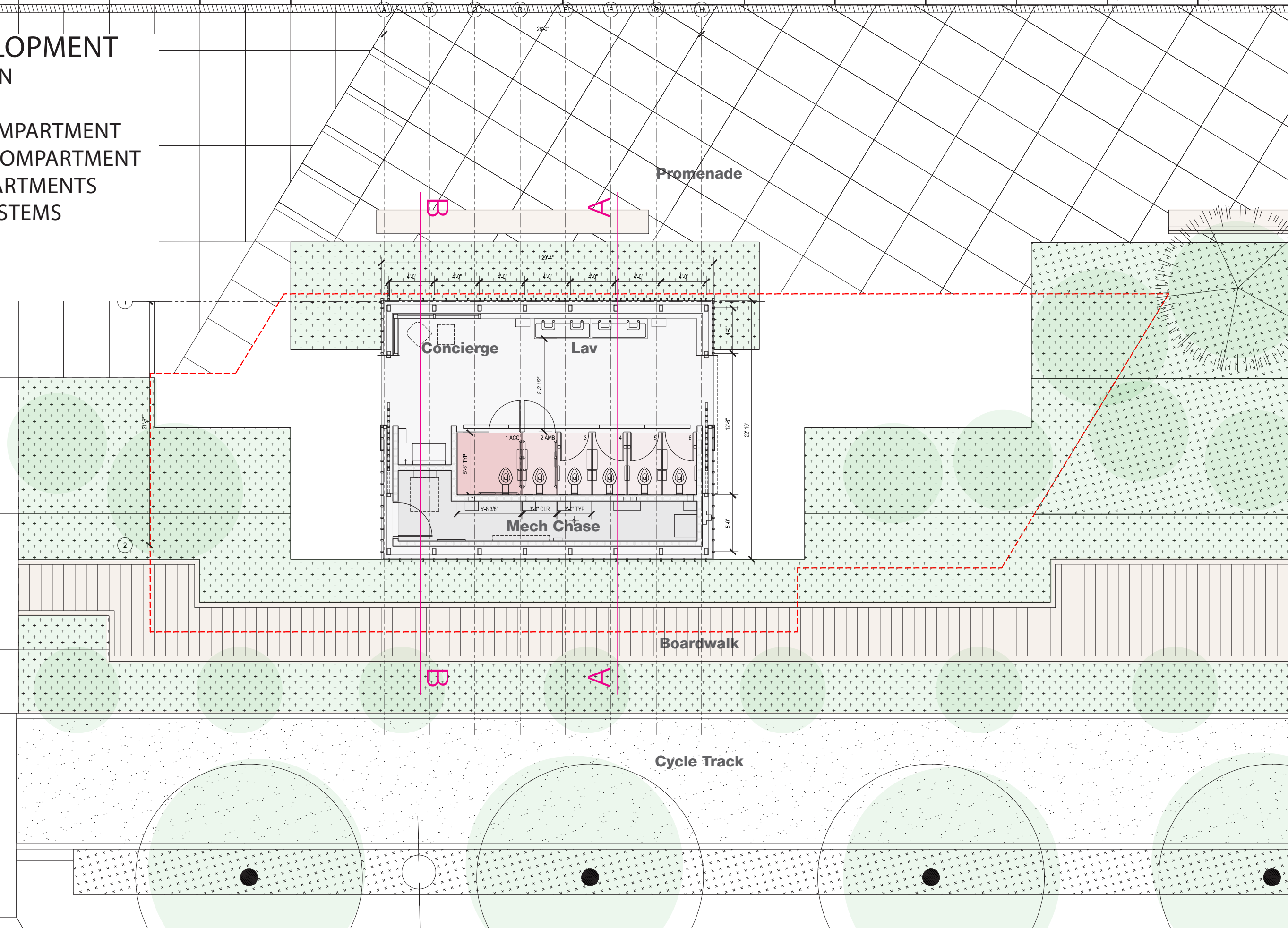
A layered approach to the restroom design would emphasize the quality and size of public space over the quantity of plumbing fixtures.

UPDATED DESIGN

DESIGN DEVELOPMENT VE RESTROOM PLAN

- (1) ACCESSIBLE COMPARTMENT
- (1) AMBULATORY COMPARTMENT
- (4) TYPICAL COMPARTMENTS
- (4) SHARED LAV SYSTEMS

670 SQFT



DESIGN DEVELOPMENT
VE RESTROOM SECTION PERSPECTIVE A LOOKING NORTH

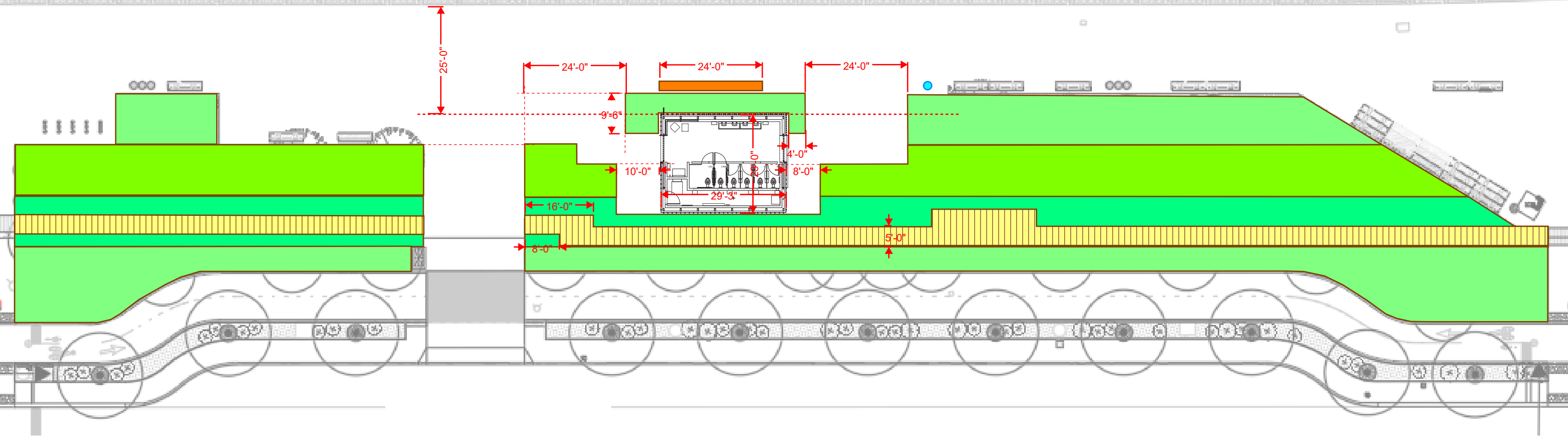
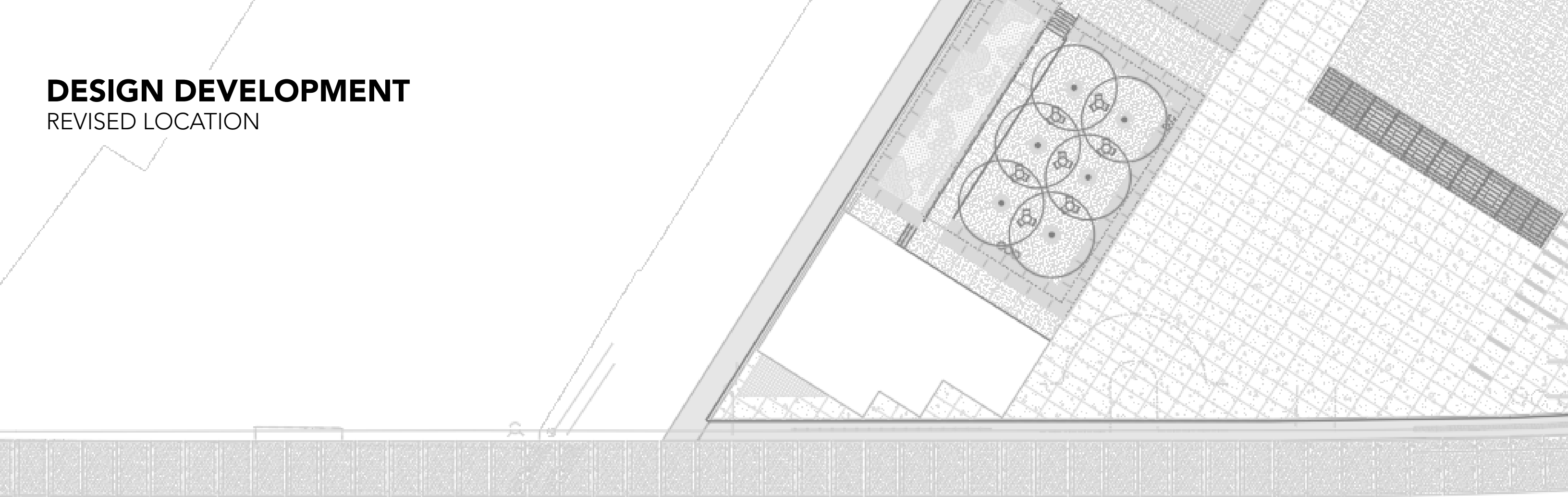


DESIGN DEVELOPMENT
VE RESTROOM SECTION PERSPECTIVE B LOOKING SOUTH



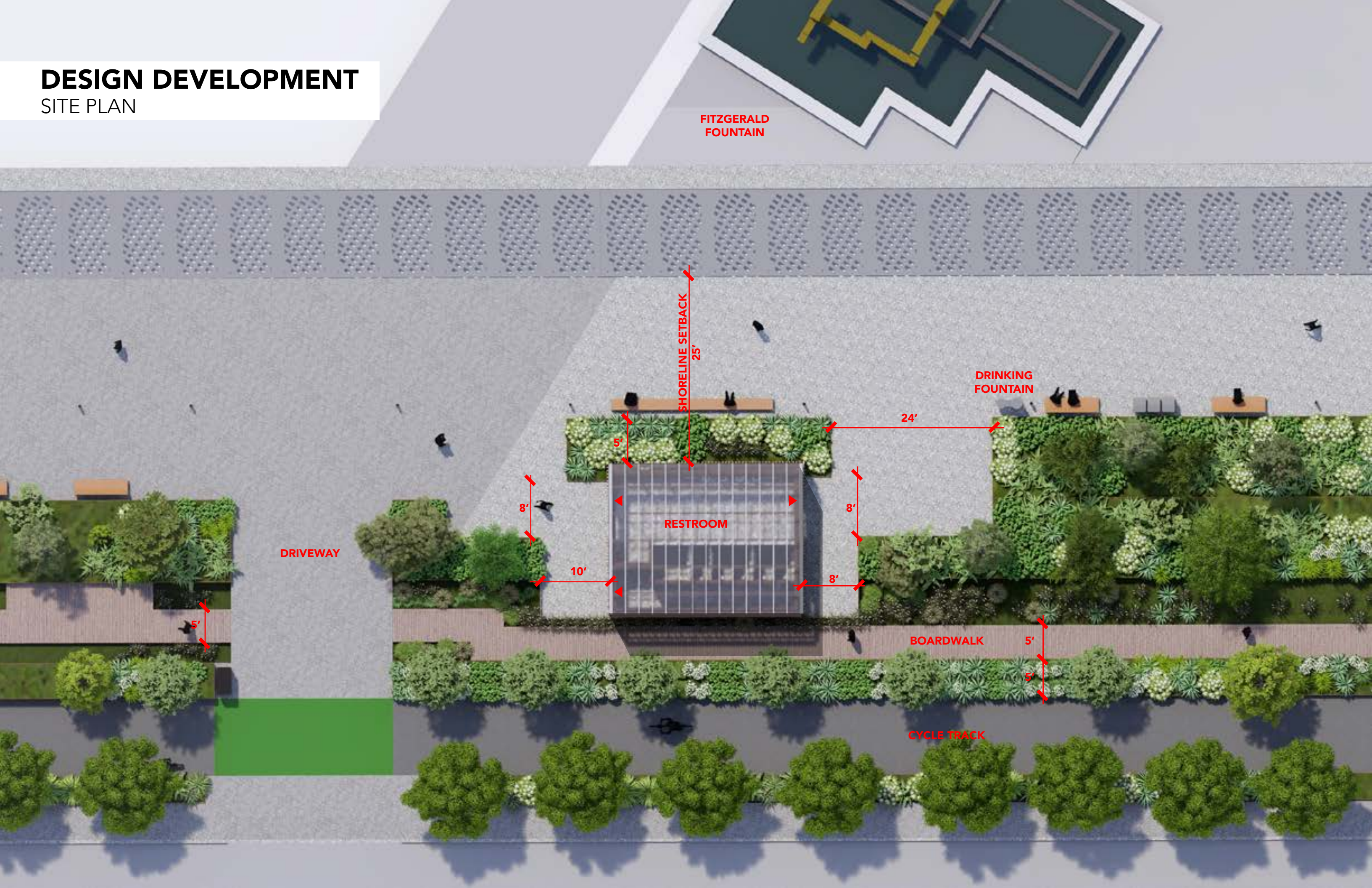
DESIGN DEVELOPMENT

REVISED LOCATION



DESIGN DEVELOPMENT

SITE PLAN



FITZGERALD
FOUNTAIN

SHORELINE SETBACK
25'

DRINKING
FOUNTAIN

24'

RESTROOM

DRIVEWAY

BOARDWALK

CYCLE TRACK

8'

10'

8'

8'

5'

5'

5'

5'

DESIGN DEVELOPMENT

AXON VIEW FROM SOUTH

DRINKING
FOUNTAIN

QUEUEING /
STROLLER PARKING

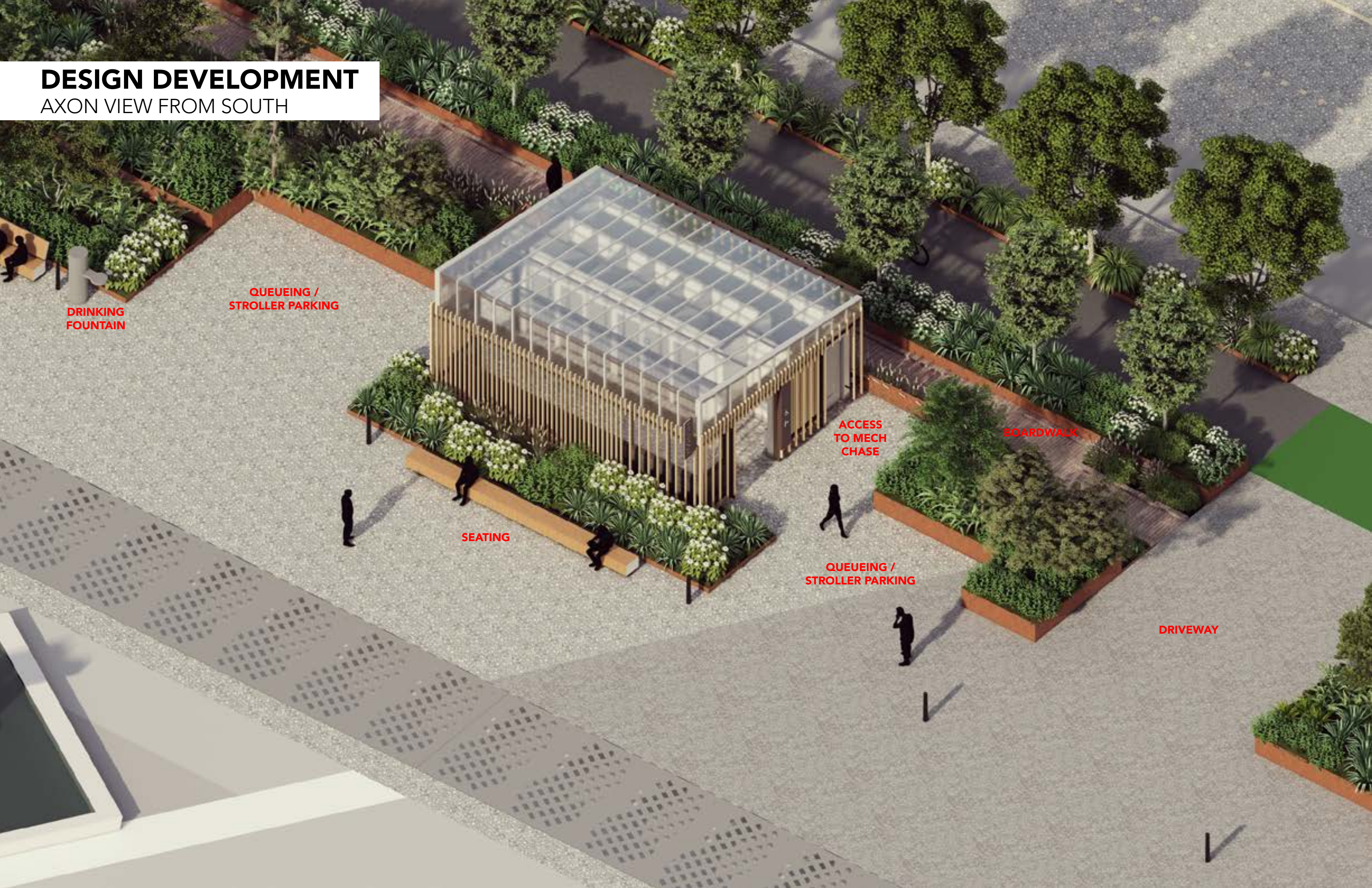
SEATING

ACCESS
TO MECH
CHASE

BOARDWALK

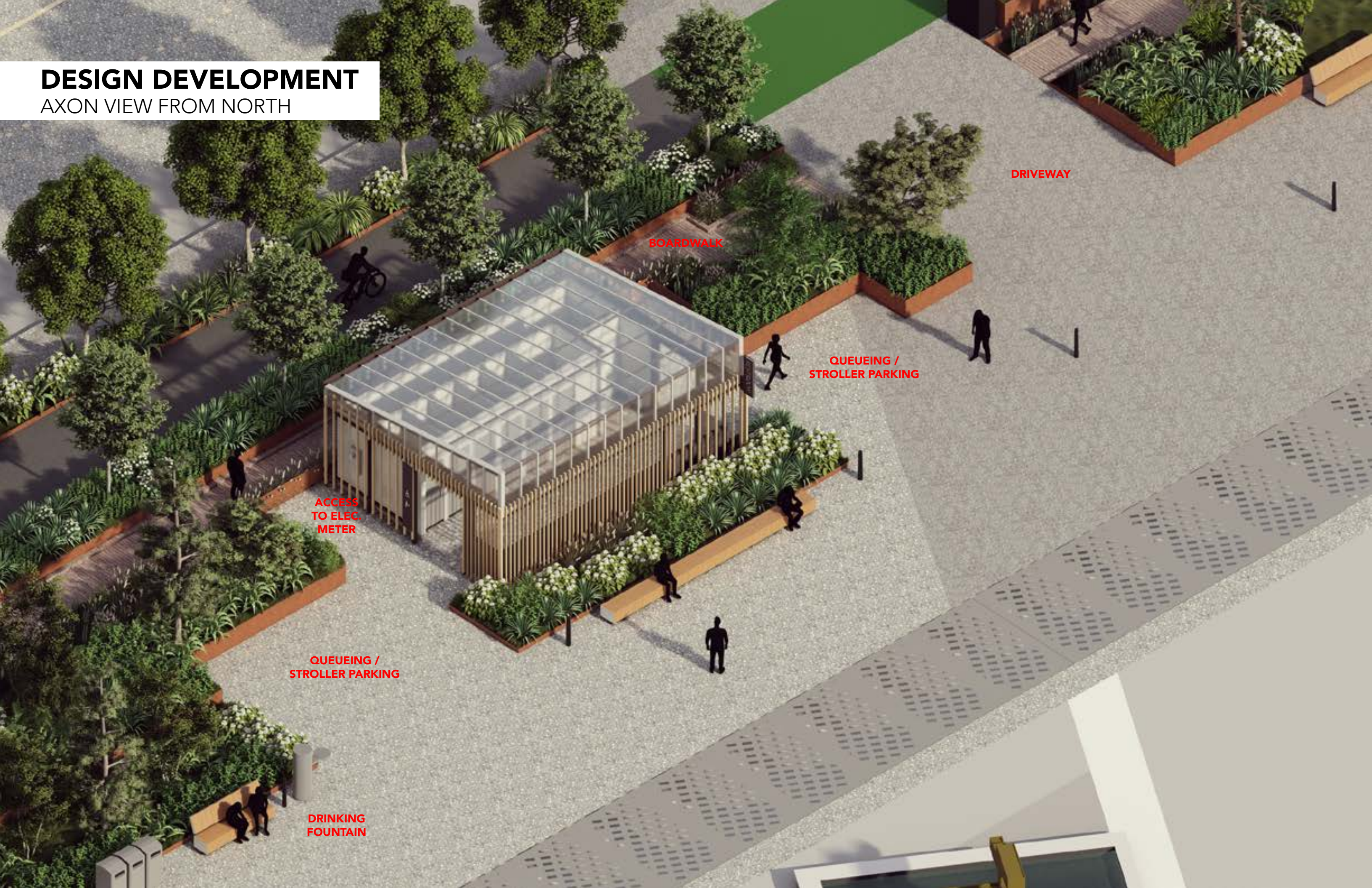
QUEUEING /
STROLLER PARKING

DRIVEWAY



DESIGN DEVELOPMENT

AXON VIEW FROM NORTH



DRIVEWAY

BOARDWALK

QUEUEING /
STROLLER PARKING

ACCESS
TO ELEC.
METER

QUEUEING /
STROLLER PARKING

DRINKING
FOUNTAIN

DESIGN DEVELOPMENT
VIEW FROM NORTH



DESIGN DEVELOPMENT
VIEW FROM FITZGERALD FOUNTAIN



DESIGN DEVELOPMENT

VIEW FROM SOUTH



DESIGN DEVELOPMENT

VIEW FROM BOARDWALK



DESIGN DEVELOPMENT
VIEW FROM BOARDWALK



MATERIALS

MATERIALS

SITE



- Aggregate concrete at promenade walkway
- Corten steel at paving insets and boardwalk planters
- Cumaru wood benches
- Ipe boardwalk
- Black basalt fountain directly across the promenade

MATERIALS

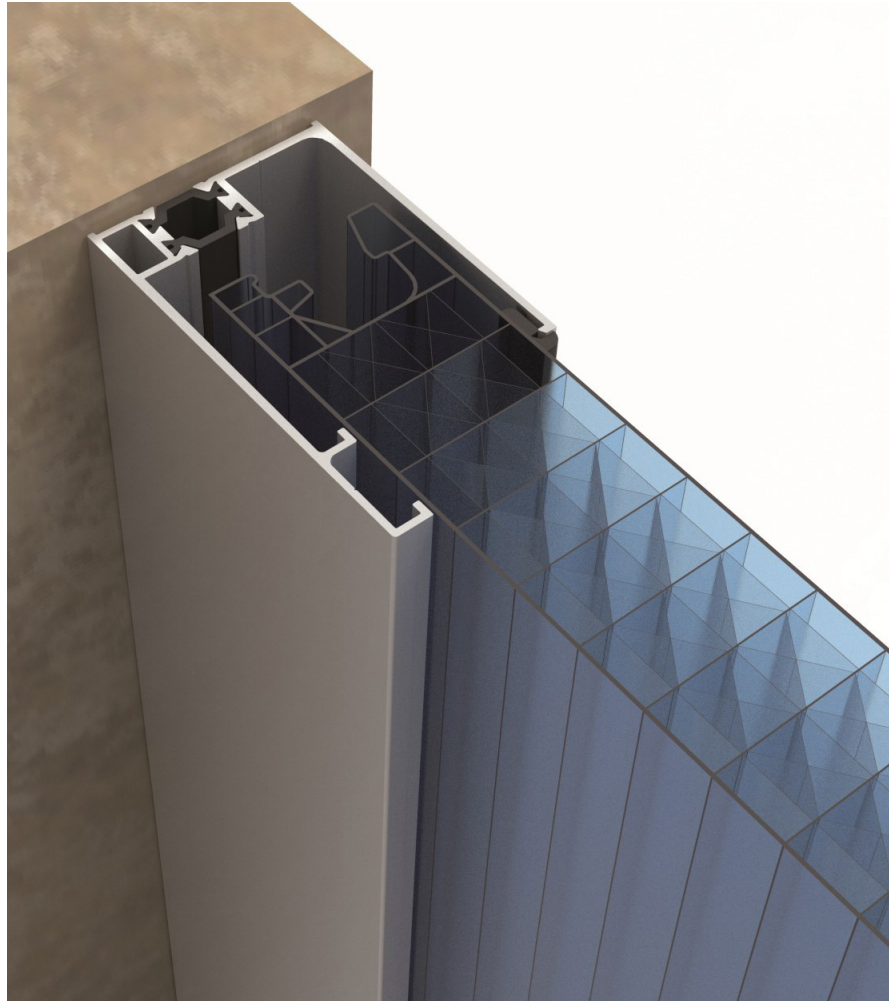
PRIMARY AND SECONDARY STEEL ELEMENTS



- Consists of primary structural steel members + secondary steel slat panels
- Long life/ structurally strong/ anti-corrosive/ non-flammable
- Re-paintable for continued maintenance
- Steel patterning plays with light + shadow

MATERIALS

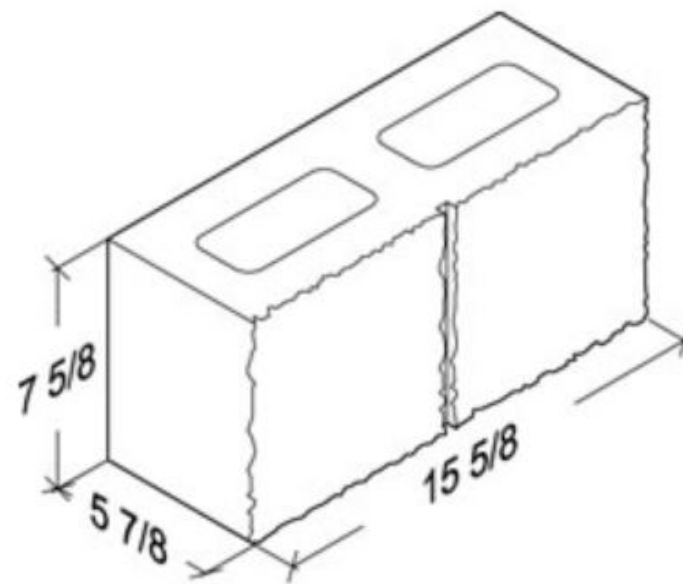
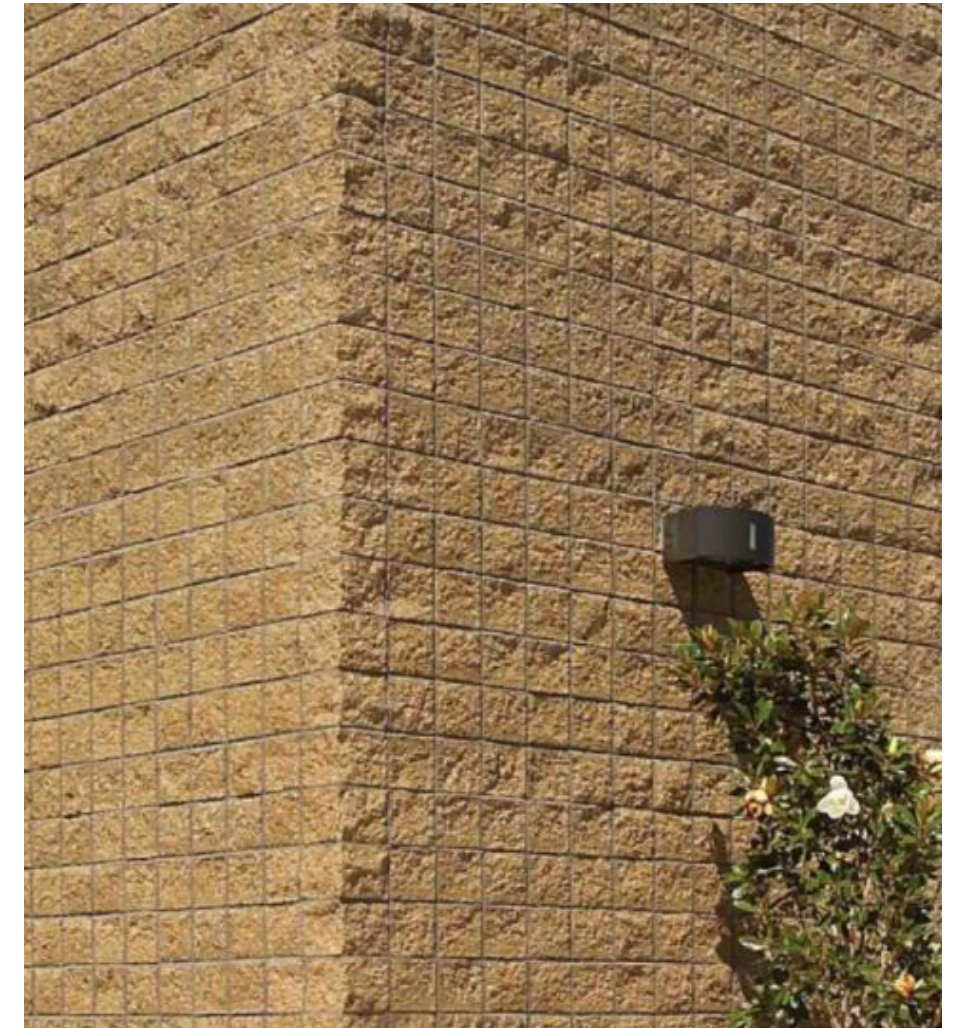
POLYCARBONATE CANOPY



- Provides filtered natural light, lessening the reliance on artificial lighting during daytime hours
- Opaque finish offers privacy from Downtown high-rise buildings
- Creates 'lantern effect' with artificial lighting during evening/ low-light hours
- Sustains less damage than glass from bird droppings/roof debris
- Large format panels minimize opportunities for water leakage

MATERIALS

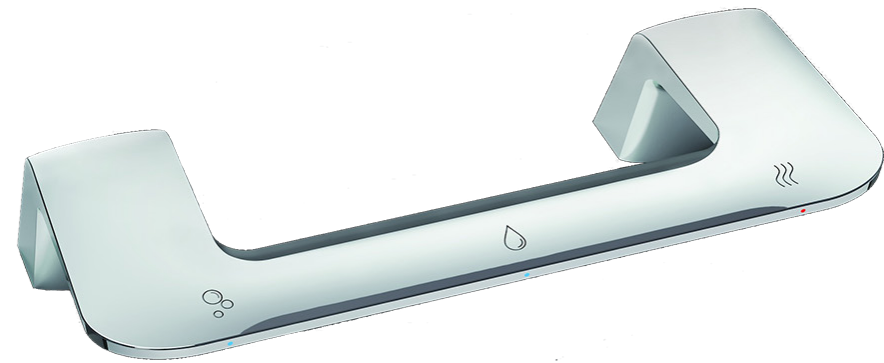
CMU



- Split-Face CMU with central score line
- Painted finish with anti-graffitti coating
- Re-paintable for continued maintenance
- Durable + economical

FIXTURES/ACCESSORIES

LAVATORY SYSTEM

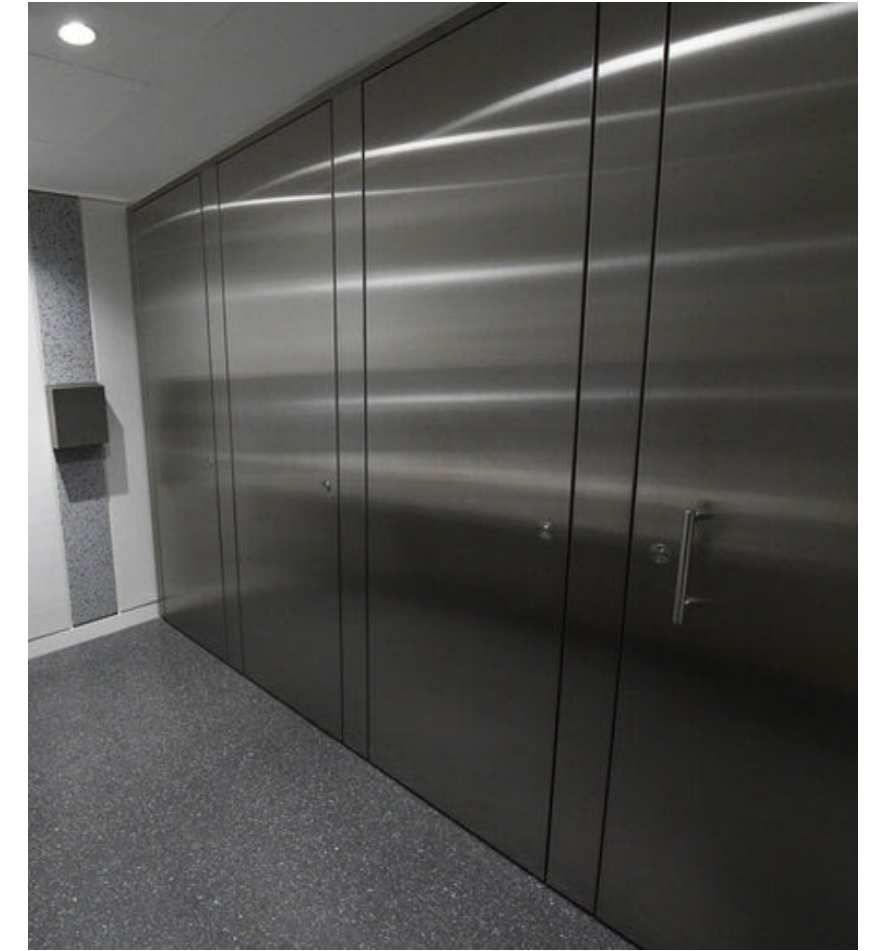


- All-in-one WashBar with touch-free soap, water and hand dryer provided at each sink
- Single WashBar basins at multi-purpose rooms
- Double WashBar basins at central handwashing station
- Designed to minimize water spill on countertop + floor
- No paper towel waste
- Prevents queueing at a separate hand dryer location
- Integrated counter/sink units made with durable eco-friendly quartz, 70% recycled material
- Easy countertop gallon fill for linked soap dispensers
- ADA approved

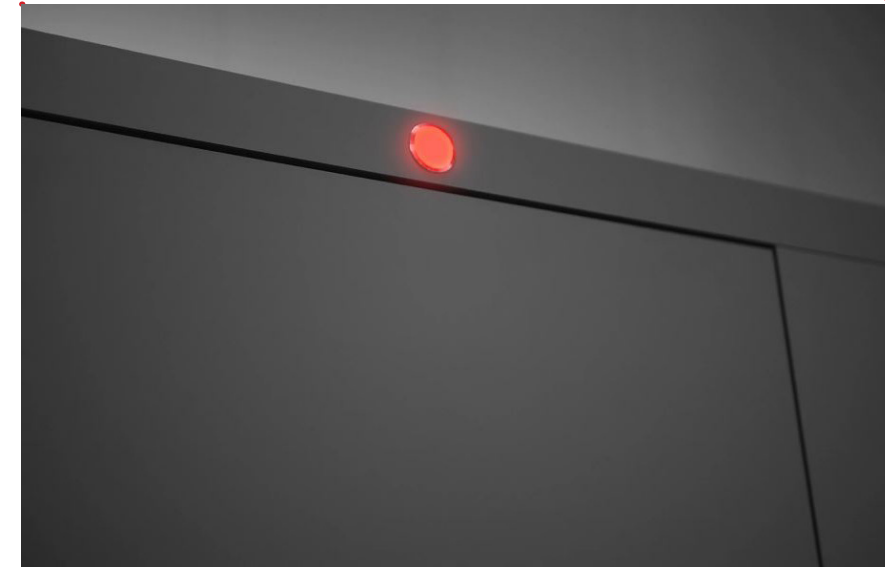


FIXTURES/ACCESSORIES

PARTITION SYSTEM



- Thrislington full-height partition system
- Compact laminate surface
- Full-height pivot hinge keyed with emergency-release access discs at top + bottom of stall door
- Integral robust door latch
- Occupancy light above stall doors
- Separate occupancy light used for multi-purpose rooms



LIGHTING

CONCEPTUAL INTENT



Lantern effect

Wayfinding
Architectural elements

Polycarbonate roof panels will cover the entire restroom interior. The opaque material will allow natural daylighting into the facility while providing privacy from higher elevations in the city.

The lantern effect will largely be achieved by uplighting the ceiling plane, providing ambient interior light.

Dowlighting will address task-specific locations like the entries,



NEXT STEPS

NEXT STEPS

INCORPORATE FEEDBACK FROM SDC SUBCOMMITTEE

CONTINUE TO WORK WITH PARKS, FRIENDS, AND SEATTLE CENTER TO DEVELOP DESIGN

IDENTIFY OPPORTUNITIES TO ENGAGE PUBLIC DURING DESIGN

CONTINUE TO INTEGRATE DESIGN INTO PROMENADE

END