



# MARION STREET BRIDGE CONSTRUCTION BEGINS IN JULY

## Completing the connection between the new Colman Dock ferry terminal and 1st Ave downtown core

Construction of the pedestrian bridge on Marion St will begin as early as Monday, July 18.

The new bridge will replace the current temporary bridge on Marion St, Western Ave and Columbia St. This structure will connect to the existing bridge between Western and 1st avenues, and tie directly into the second floor of the new ferry terminal. This will enhance the experience for the millions of annual users who walk and roll to and from Colman Dock.

### WORK ZONE:

- Marion St between Alaskan Way and Western Ave

### SCHEDULE AND HOURS:

- Monday-Friday, 7 AM to 4 PM
- Occasional overnight and weekend work

### PEDESTRIAN AND VEHICLE ACCESS:

- Vehicle access on Marion St reduced to one lane from 7 AM to 2:30 PM on work days
- South sidewalk on Marion St between Alaskan Way and Western Ave closed, pedestrian access maintained on north side
- East side sidewalk on Alaskan Way between Columbia and Marion streets closed, pedestrian access maintained on west side of Alaskan Way and Western Ave
- Pedestrian access between Colman Dock and 1st Ave will be maintained via the temporary Marion St bridge
- Access to businesses will be maintained

### EQUIPMENT AND NOISE:

- Work will include mobilization of large equipment, excavation, jack-hammering, saw-cutting, concrete pouring and using generators
- Expect construction equipment and vehicles moving in and out of the work zone
- Construction trucks and equipment may be noisy



Map of current work zones and future Marion Street Bridge work zone.

### PARKING AND LOAD ZONES:

- No parking on Marion St between Alaskan Way and Western Ave

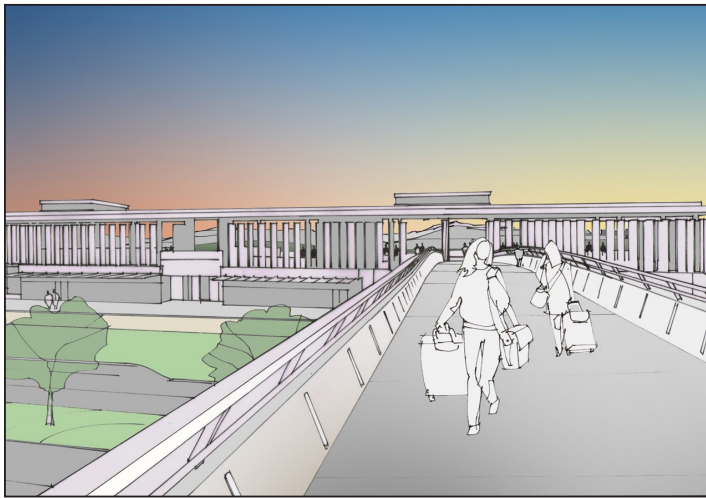


# A GLIMPSE OF THE FUTURE BRIDGE

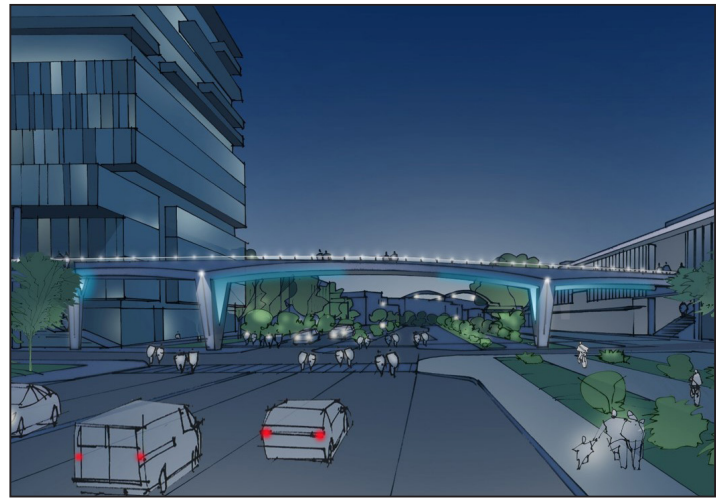
## The design elements on the bridge will provide better and safer access to the ferries at Colman Dock

The Marion Street Bridge over Alaskan Way, one of the busiest pedestrian bridges on the west coast, will provide a wider pathway and have better lighting both above and below the bridge.

This project is expected to be complete by late 2023.



The bridge will be 16-feet wide (compared to the 13-feet of the previous bridge) and tie in directly to Colman Dock



Bridge lighting will improve safety and the nighttime experience along the waterfront



### SIGN UP FOR CONSTRUCTION UPDATE EMAILS

Sign up for our construction update email list at [waterfrontseattle.org/construction-updates-mailing-list](https://waterfrontseattle.org/construction-updates-mailing-list).



### VISIT DOWNTOWNSEATTLEPARKING.ORG

Visit [downtownseattleparking.org](https://downtownseattleparking.org) to find rates, hours and directions to thousands of parking spaces in the area.



### WATERFRONTCONSTRUCTION.ORG

The Waterfront is going to be a busy place over the next several years. Visit [waterfrontconstruction.org](https://waterfrontconstruction.org) for more information on multiple projects compiled all in one place.

### QUESTIONS?

If you have questions or would like more information about the Waterfront Seattle program, please call, email or visit our website.

206.499.8040

[info@waterfrontseattle.org](mailto:info@waterfrontseattle.org)

[waterfrontseattle.org](https://waterfrontseattle.org)