



# PIER 58 WATERFRONT FOR ALL

Pier 58, currently known as Waterfront Park, is an important part of accomplishing Waterfront Seattle's goal of a "Waterfront for All." Pier 58, currently closed due to its poor structural condition, will be fully replaced as part of the City's Waterfront Seattle Program. It is redesigned with a focus on improving access and use for the community, and creating an inviting space for families. The rebuilt pier will also improve marine habitat and provide enhanced views of Elliott Bay and the Olympic Mountains.

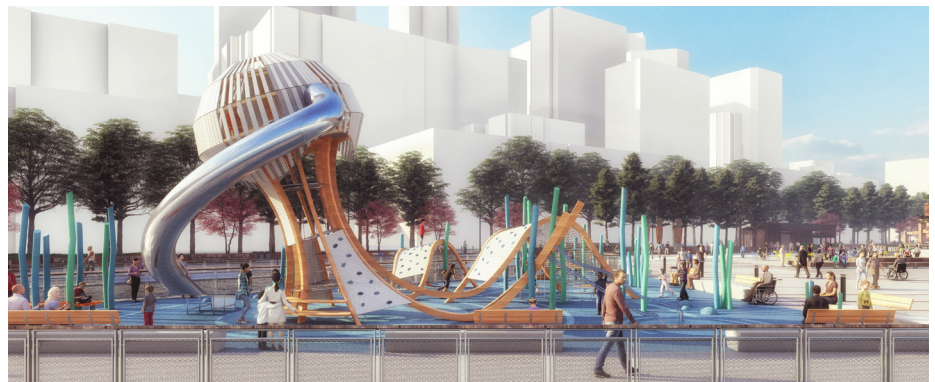
## ELEMENTS OF THE NEW PIER

The space is being designed to provide for flexible programming and will include the following elements:

- **An elevated seating area and lawn** for relaxing and enjoying scenic views.
- **A viewing area** that provides large, open views to the Bay and the Olympic Mountains.
- **The Fitzgerald Fountain**, currently on Pier 58, will be restored and integrated into the new pier.
- **A plaza and event space**, that can be used for seasonal activities such as concerts, outdoor movies and other pop-up events.
- **A playground** for kids and families. This iconic playground will appeal to people of all abilities, interests and ages.
- **A restroom** and concierge space adjacent to the promenade to serve visitors and families and to provide information on current programming.



*The above design features promote areas for play and relaxation.*



*The playground has a four-level jellyfish tower, a variety of climbing elements, wobble boards, an 18-ft slide and more!*



*The new pier includes an elevated seating area and lawn to enjoy scenic views.*



**Seattle**  
Office of the Waterfront  
and Civic Projects





## New artwork along the promenade

A new permanent installation called *Family*, by local artist and Puyallup Tribe member Shaun Peterson, will greet visitors on the promenade near Pier 58.

The three welcome figures will look out over the pier to the water, across the bay to the Kitsap Peninsula, where Chief Seattle is buried.

## HABITAT IMPROVEMENTS

The design of Pier 58 is improving habitat, including enhancing the fish migration corridor that the Seawall Project completed in 2017.

Habitat will be improved by:

- An open area above the intertidal zone(s) that will provide additional light to the nearshore habitat. This helps aquatic plants (or fish food) to grow and enhances fish migration.
- New light penetrating surfaces, like the grating used for Pier 62. Additional light provides a safer passage for juvenile fish near the shore where there are fewer large predators.
- Reshaping the pier to provide an alternative access point near the north end of the pier for fish to enter the fish migration corridor.



Grating, as pictured above, and other light penetrating surfaces provide light for young salmon during their migration.



This all gender restroom will have some transparency to the outside, making the space feel airy and open.

## SCHEDULE

Pier 58 construction is anticipated to begin in late 2022 and take approximately two years to complete.

## QUESTIONS OR COMMENTS?

Email us: [info@waterfrontseattle.org](mailto:info@waterfrontseattle.org)

Call us: 206.499.8040

## VISIT OUR WEBSITE

Sign up for email updates: [waterfrontseattle.org](https://www.waterfrontseattle.org)

## New restroom across the way

Another element of Pier 58 is the construction of a new restroom and concierge space on the promenade across from the pier.

The goal for this restroom is to provide a welcoming, safe and clean facility, with attending concierge during open hours, to enhance the visitor experience for the diverse users of the Waterfront.

This concept is still in design and will be completed in 2022.