



**PIER 58:**

**60% DESIGN UPDATE & PLAYGROUND DISCUSSION**

**November 16, 2020**

Cale McPherson, Pier 58 Project Manager  
Earthscape

Dan Van Haastrecht, Playground Project Manager  
Nathan Schleicher, Playground Design Team Lead  
Niek de Jong, Playground Designer  
Alex Waffle, Playground Principal



# AGENDA

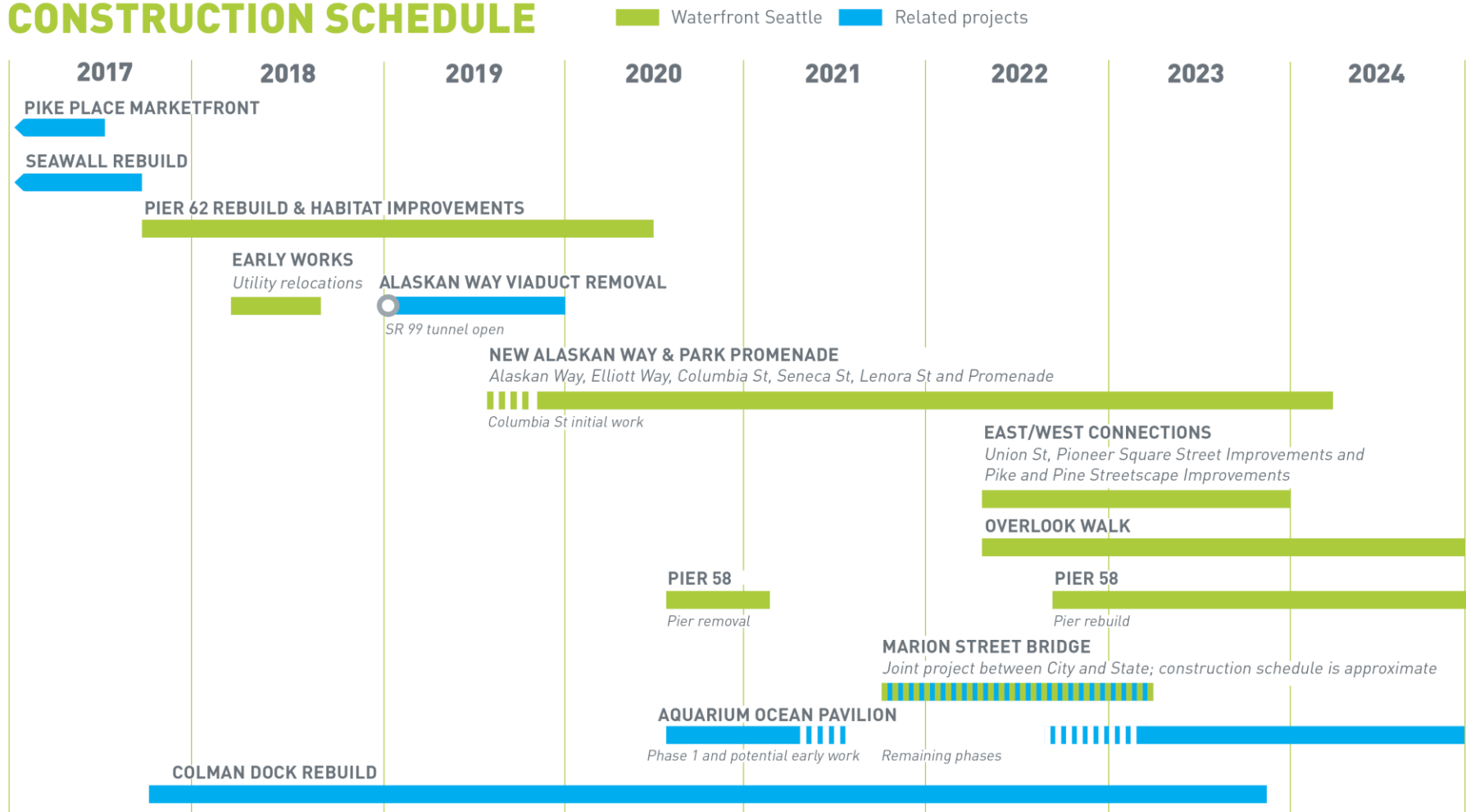


- Introductions
- 60% Design Overview
- Playground Design Process
- Playground Themes/Play Types Discussion

# TIMELINE



## CONSTRUCTION SCHEDULE



# EXISTING CONDITION



## LEGEND

 Construction work zone

Access to businesses remains open

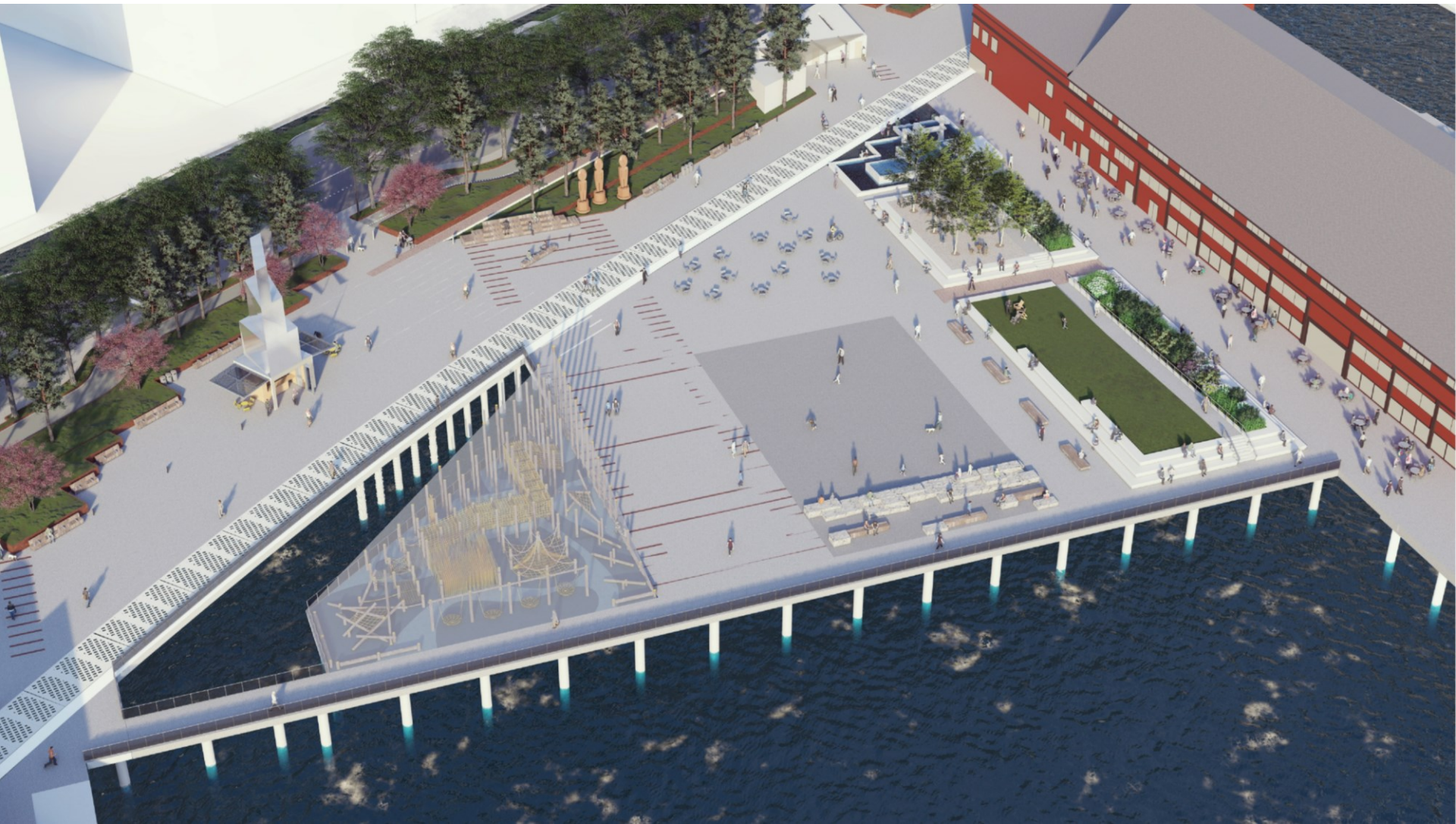


Miner's  
Landing

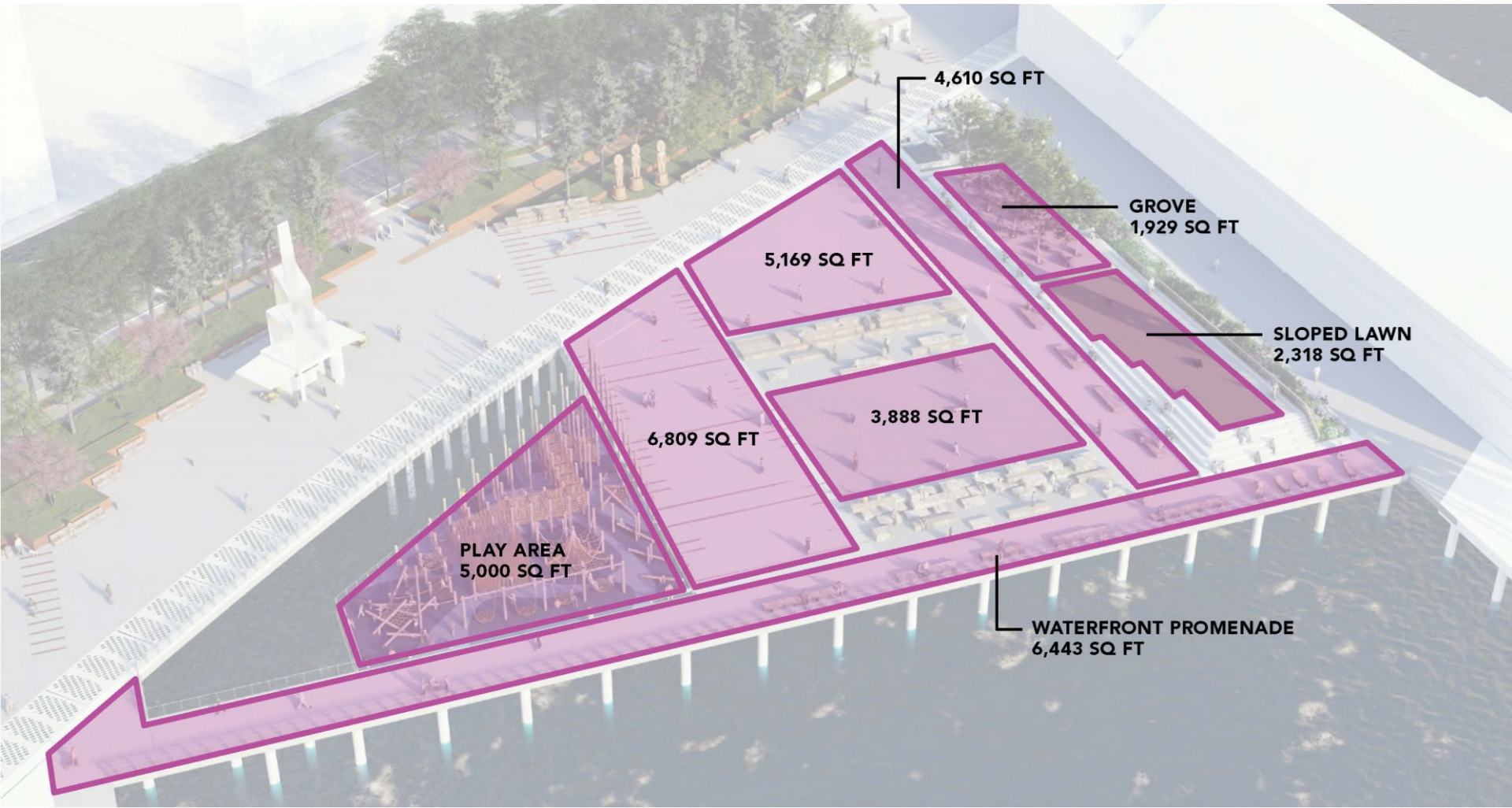
Seattle  
Aquarium

Alaskan Way

# PROPOSED DESIGN



# PROPOSED DESIGN



# GROVE AND LAWN



# GROVE



# PATHWAY TO PIER 57



# LANDING AT LAWN



# VIEW FROM LAWN



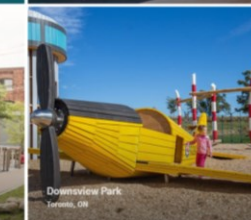
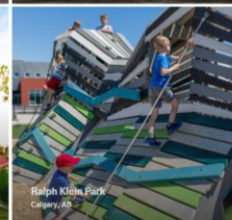
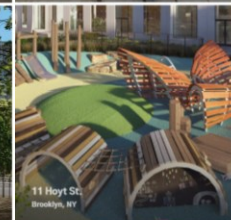
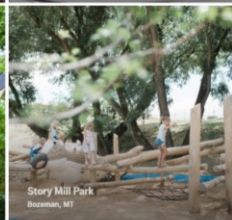
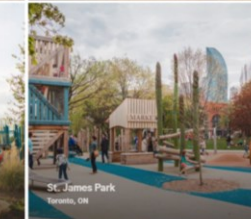
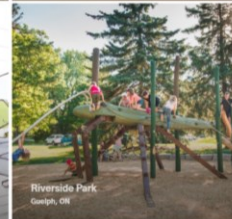
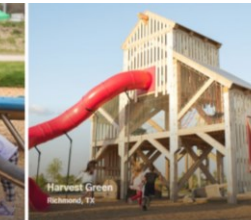
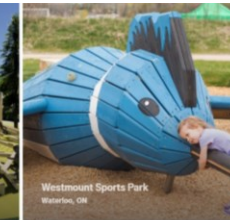
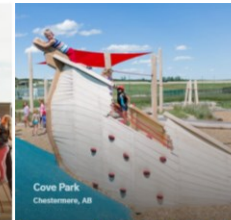
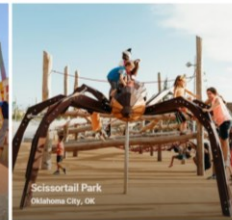
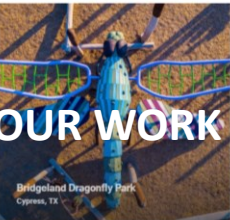
# PLAZA



# PIER 58 OVERVIEW



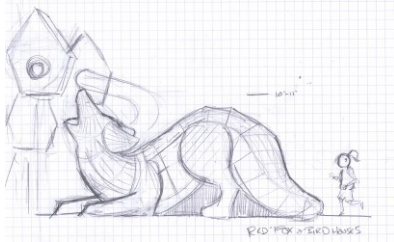
# PLAYGROUND DESIGN PROCESS



# PLAYGROUND DESIGN PROCESS



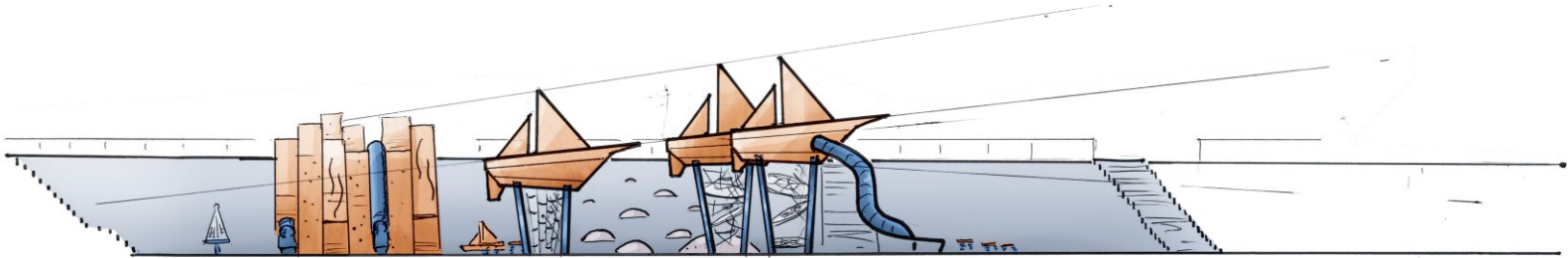
DESIGN & FABRICATION PROCESS



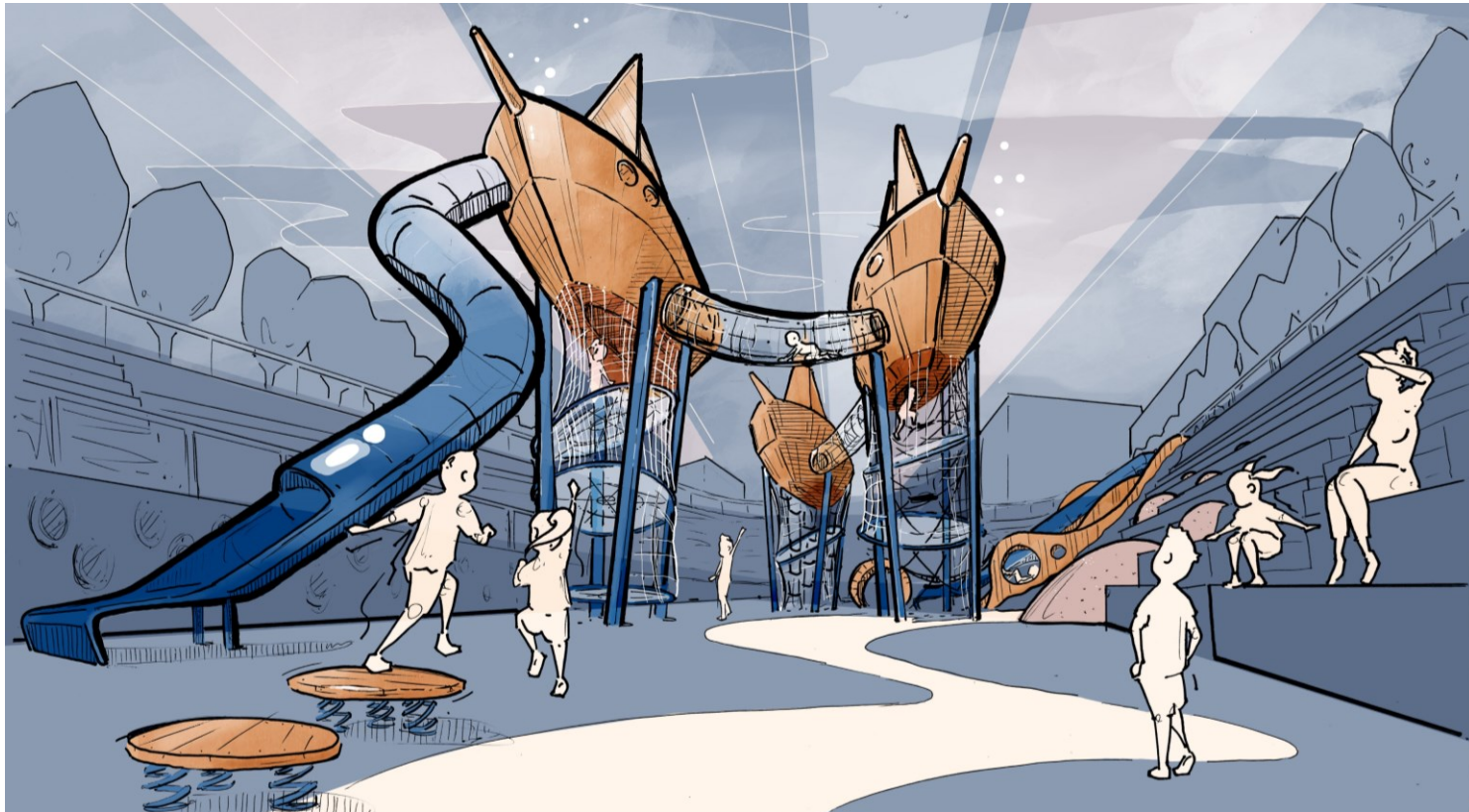
# PLAYGROUND DESIGN PROCESS



earthscape



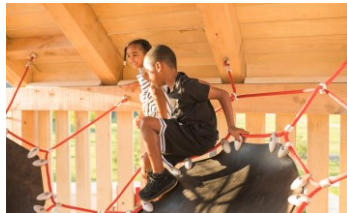
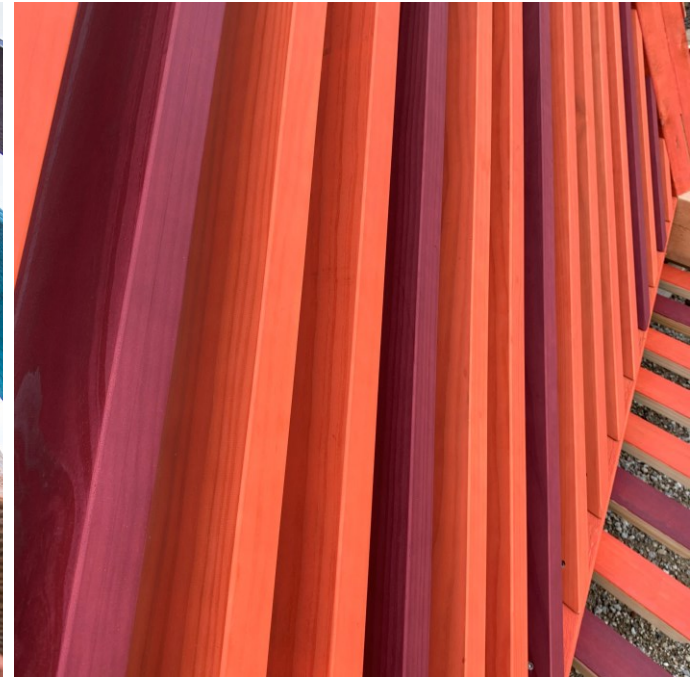
**COMPLEXITY  
& INTRICACY**



# PLAYGROUND DESIGN PROCESS



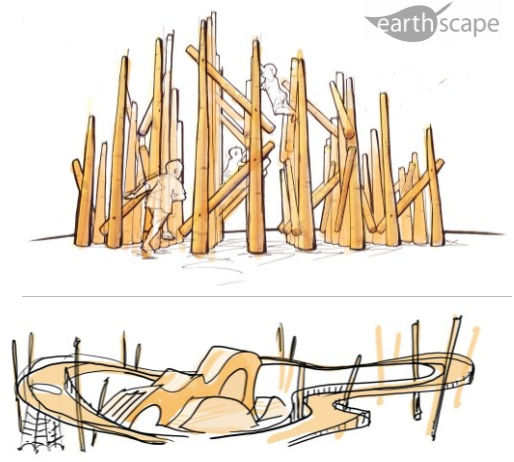
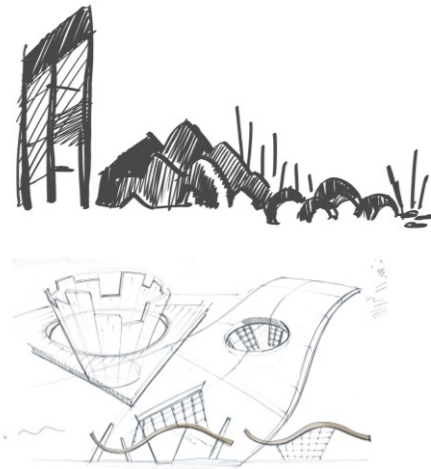
earthscape



# PLAYGROUND DESIGN PROCESS



# PLAYGROUND DESIGN PROCESS

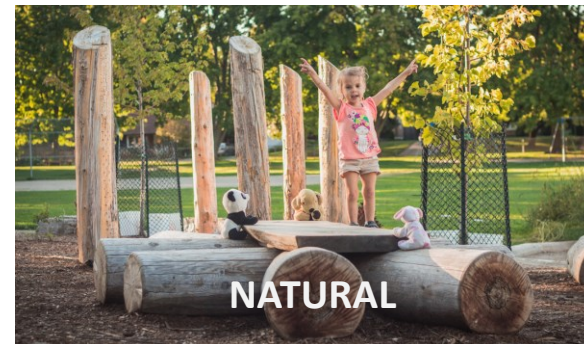


# PLAYGROUND DISCUSSION

## - WHAT THEMES ARE YOU DRAWN TO?



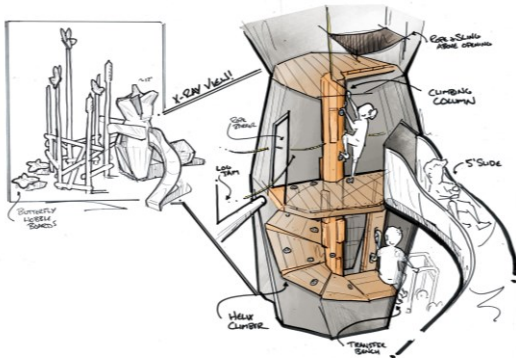
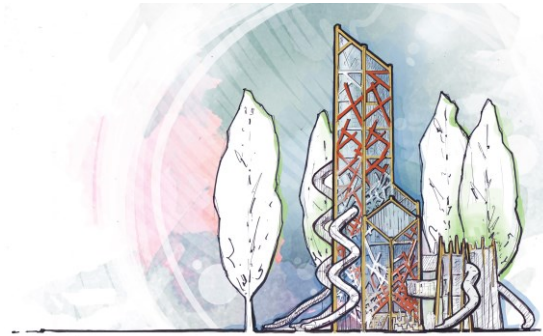
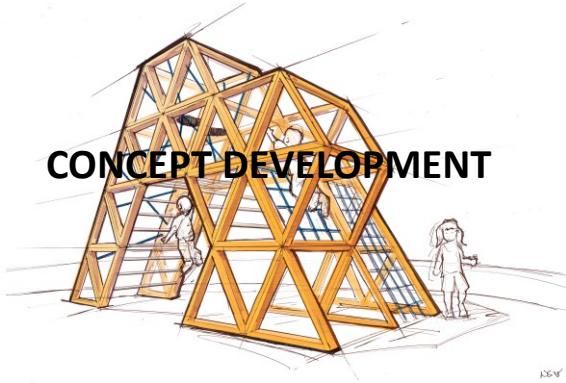
# PLAYGROUND DESIGN PROCESS



# PLAYGROUND DESIGN PROCESS



## CONCEPT DEVELOPMENT



# THANK YOU!



## Online engagement through Dec. 6

[pier58.participate.online](http://pier58.participate.online)

## Next steps

- Jan 7, 2021 - Seattle Design Commission
- Mid-Jan 2021 - Concept review
- Mid-Feb 2021 - 90% Design



## QUESTIONS?

Contact us at:

info@waterfrontseattle.org

206.499.8040

[waterfrontseattle.org](http://waterfrontseattle.org)