



# WATERFRONT LANDINGS BOARD

November 21, 2019



**WATERFRONT SEATTLE PROGRAM**

**SEAWALL PROJECT**

**SR 99 TUNNEL PROJECT**

**SEATTLE MULTIMODAL TERMINAL AT  
COLMAN DOCK PROJECT**

**PARTNER PROJECTS**

Project construction dates are tentative and  
subject to change

ELLIOTT BAY

OLYMPIC  
SCULPTURE  
PARK

Waterfront Seattle  
(2018+)

Pier 62 Rebuild  
(2017-2019)

Seattle Multimodal Terminal  
at Colman Dock Project  
(2017-2023)

Seawall Project  
(2013-2017)

PIKE PLACE  
MARKET

BELLTOWN

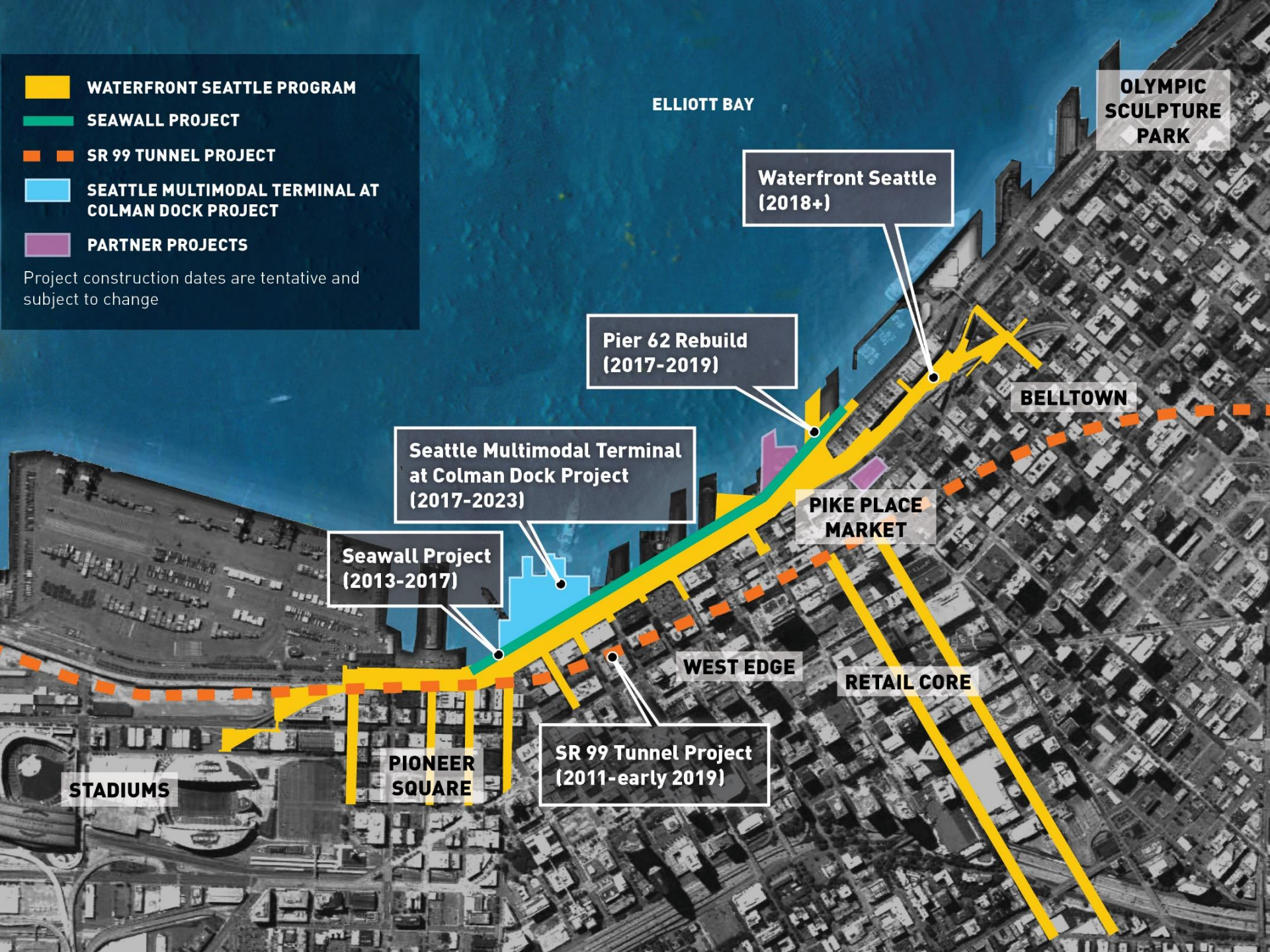
WEST EDGE

RETAIL CORE

SR 99 Tunnel Project  
(2011-early 2019)

PIONEER  
SQUARE

STADIUMS



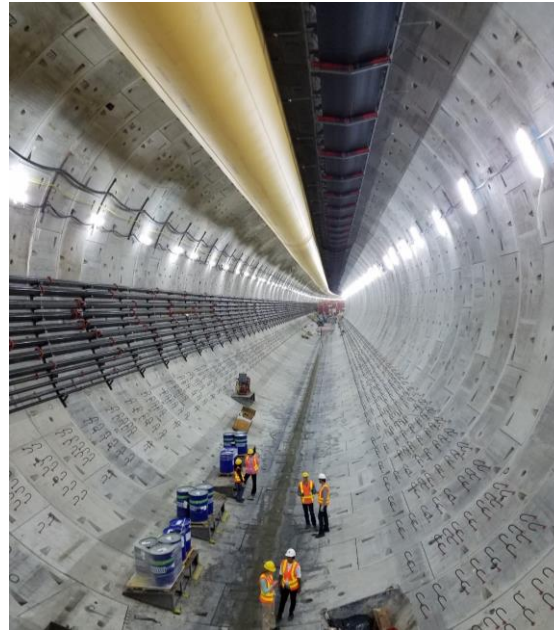




NEW SEAWALL COMPLETE  
IN 2017

---

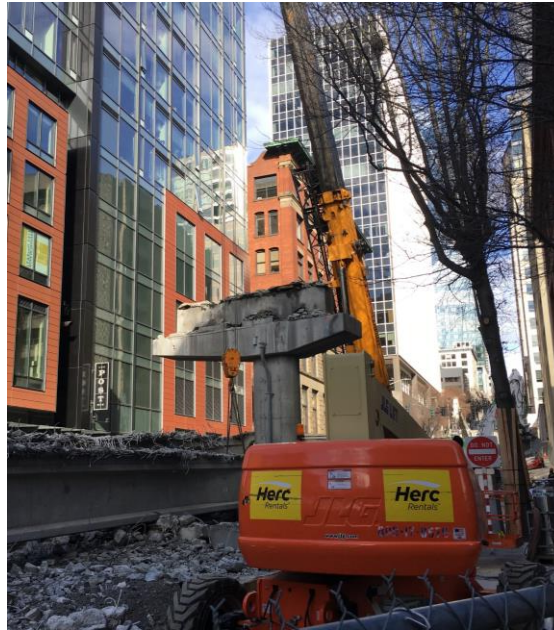




# SR 99 TUNNEL OPEN TO TRAFFIC: FEBRUARY 4, 2019

*Photos courtesy of WSDOT*





ALASKAN WAY VIADUCT  
DEMOLITION BEGAN:  
FEBRUARY 2019

---



# WATERFRONT SEATTLE PROGRAM AREA



○ Waterfront Seattle Program Area

○ Related Projects

- 1 Railroad Way
- 2 Alaskan Way + Elliott Way
- 3 Pioneer Square Streets
- 4 Columbia Street
- 5 Marion Street Pedestrian Bridge
- 6 Seawall

- 7 Seneca Street
- 8 Promenade
- 9 Union Street Elevator and Stairs
- 10 Waterfront Park
- 11 Protected bike lane
- 12 Seattle Aquarium expansion
- 13 Overlook Walk

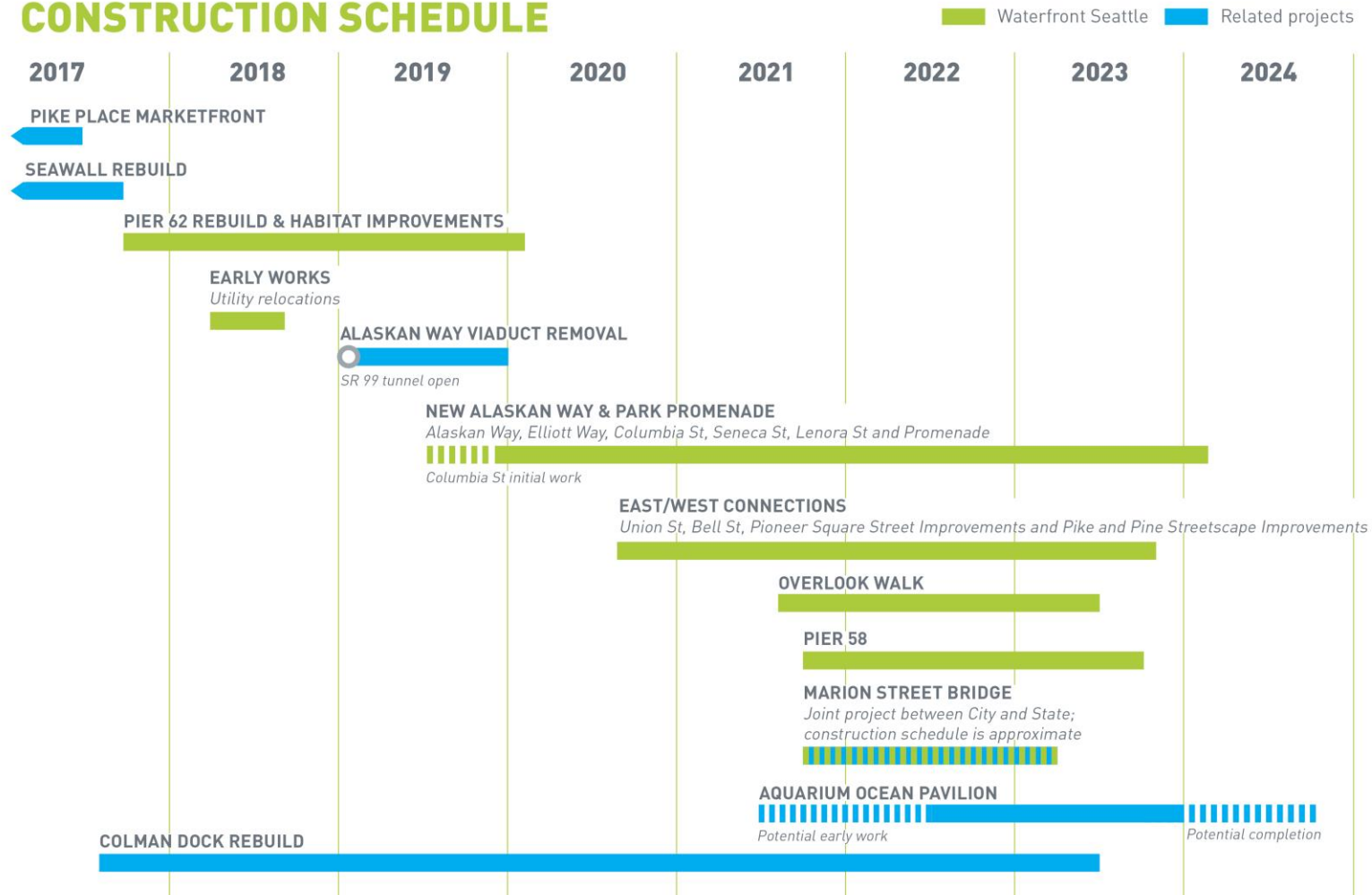
- 14 Pike Pine Renaissance: Act One
- 15 Pier 62 Rebuild
- 16 Pike Place Market's MarketFront
- 17 Bell Street Park Extension



# SCHEDULE



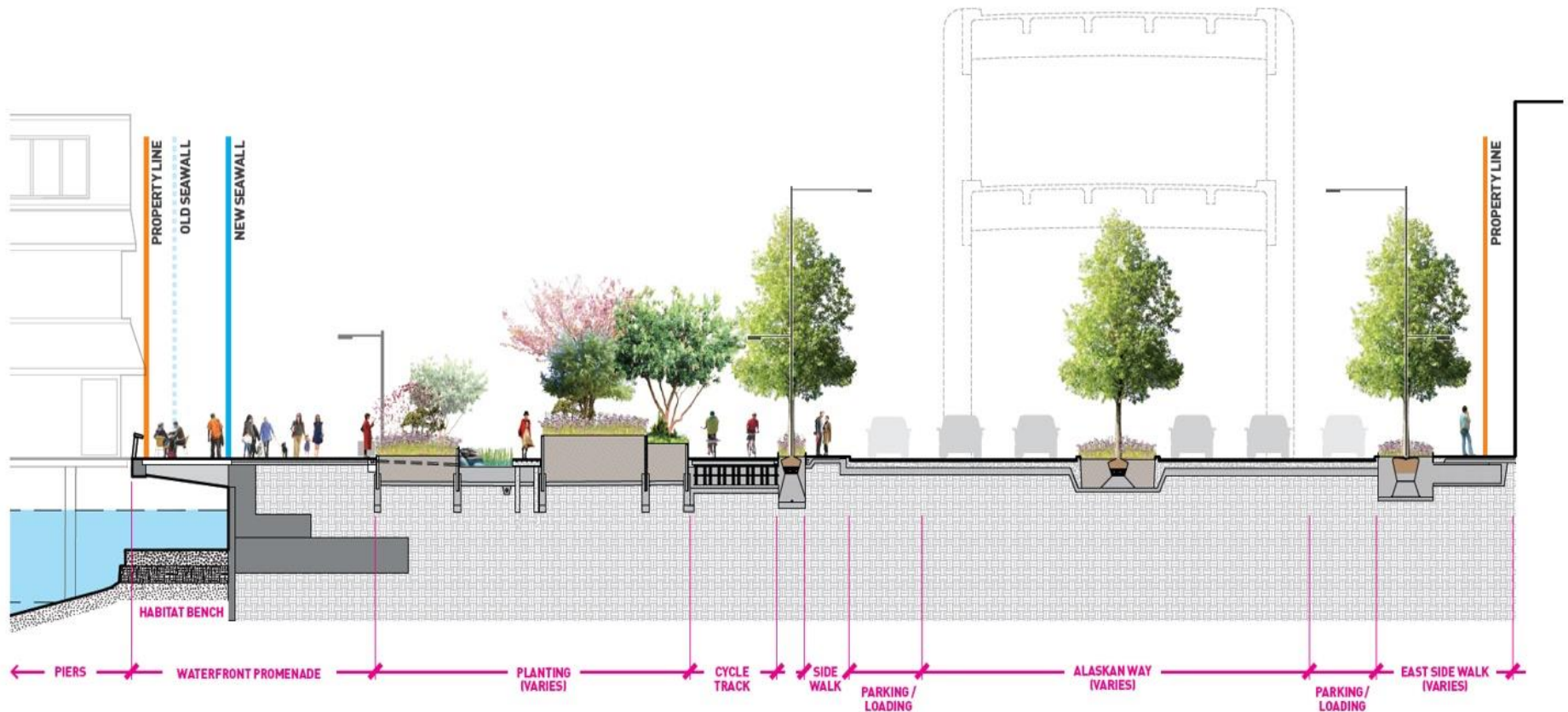
## CONSTRUCTION SCHEDULE



NOTE: Construction dates subject to change pending ongoing construction sequencing evaluation and assumptions for all projects



# TYPICAL CROSS SECTION



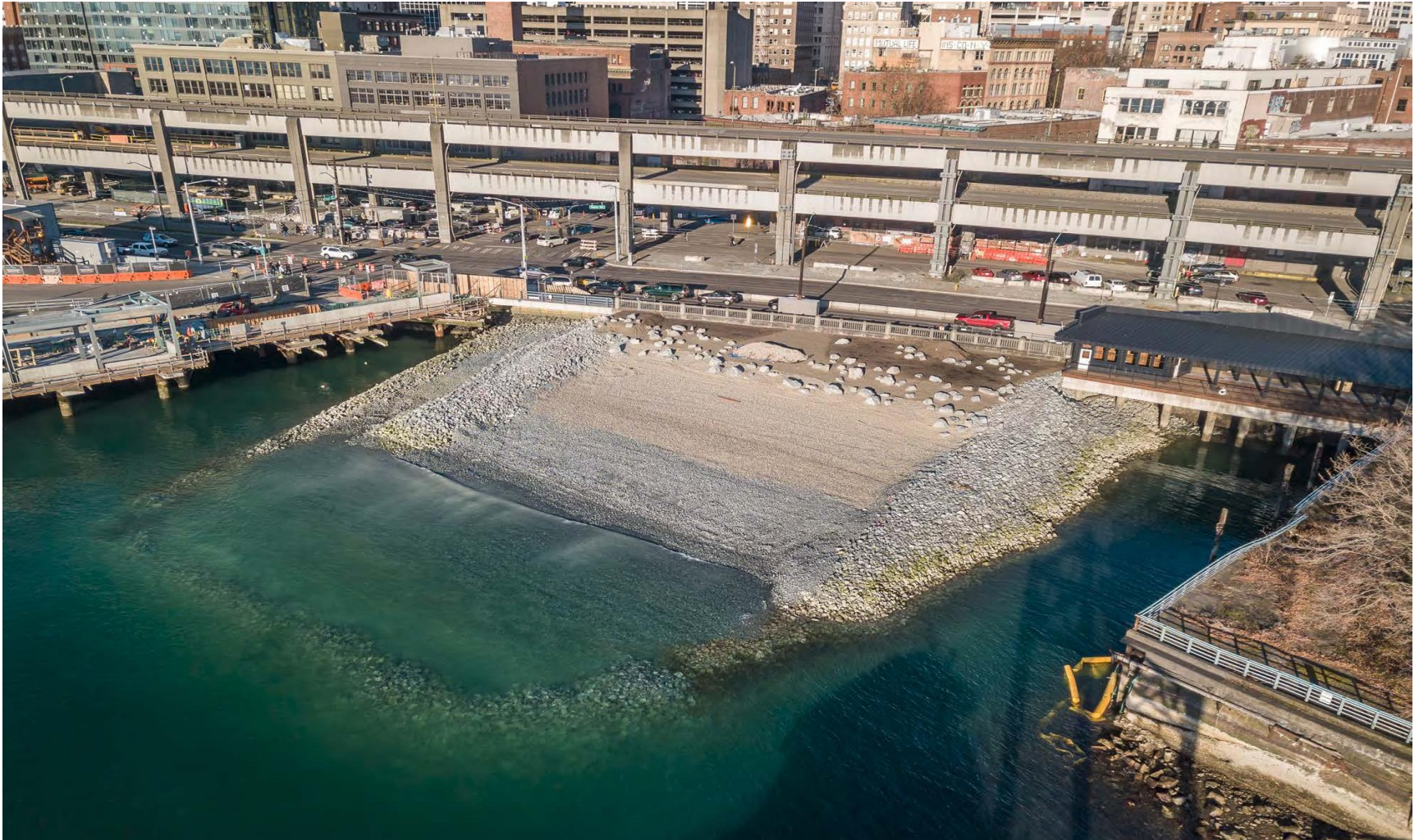


# ALASKAN WAY SOUTH OF YESLER, HABITAT BEACH





# HABITAT INTERTIDAL ZONE (BEACH) CONSTRUCTION





# ALASKAN WAY





# COLMAN DOCK TRANSIT HUB



ART BY OSCAR TUAZON



# UNION STREET ELEVATOR AND STAIRS





# AQUARIUM EXPANSION





# OVERLOOK WALK





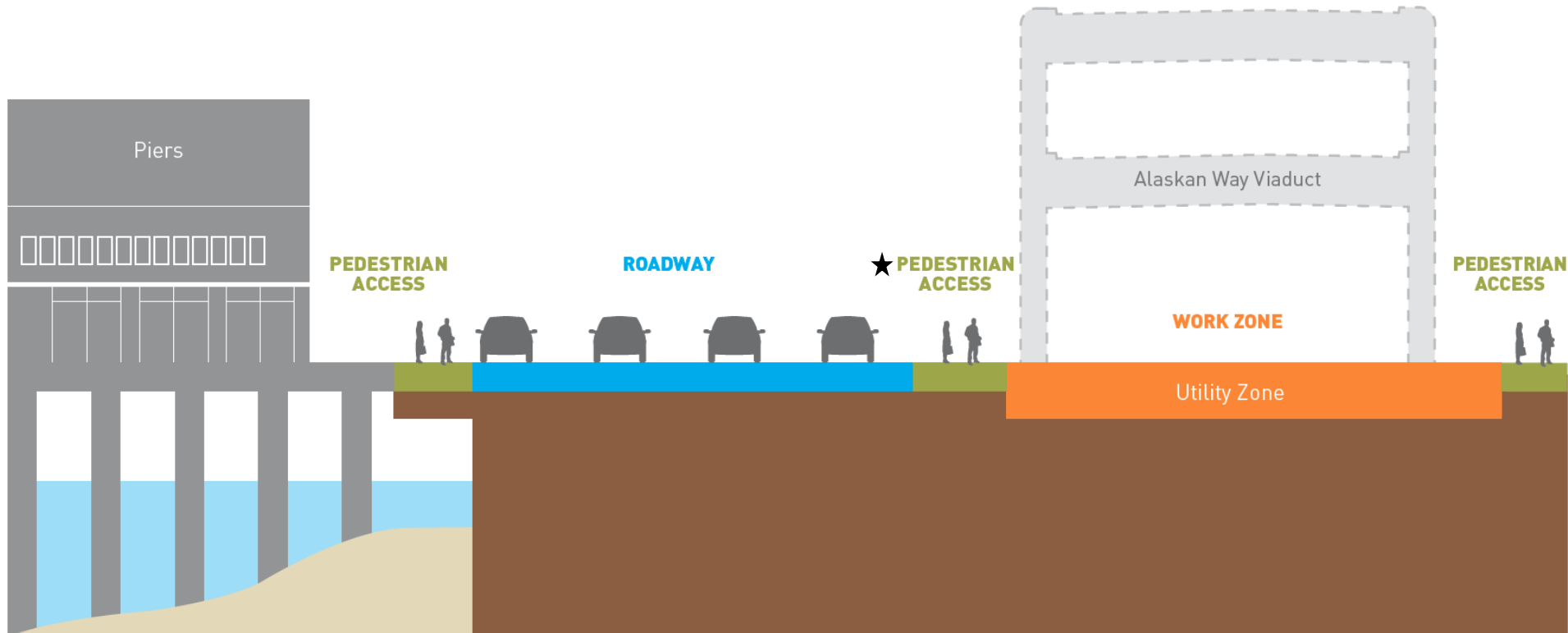
# WATERFRONT CONSTRUCTION: CORE VALUES



- Ensure access for businesses, residents, and all modes of travel (transit, freight, cars, bicycles, pedestrians)
- Support operations for BNSF, Port, and ferries
- Maintain major utility services
- Support access to parking and transit during construction
- Coordination with all public and private projects



# TYPICAL WORK ZONE – YEAR 1



★ May shift for construction needs

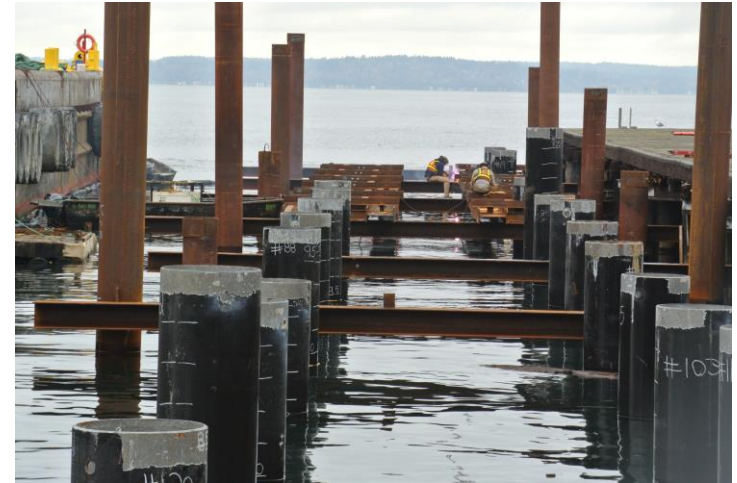


# TYPICAL WORK ZONE





# PIER 62 REBUILD – CONSTRUCTION





# PIER 62 – OPENING EARLY 2020!





# WATERFRONT PARK OPERATIONS



- Partnership with non-profit “Friends” organization:
  - \$4.8M Annual City funding for maintenance
  - \$1-\$2M private fundraising for programming and activation
- Free public events year round
- Dedicated, specialized maintenance team
- Oversight Committee to ensure accountability

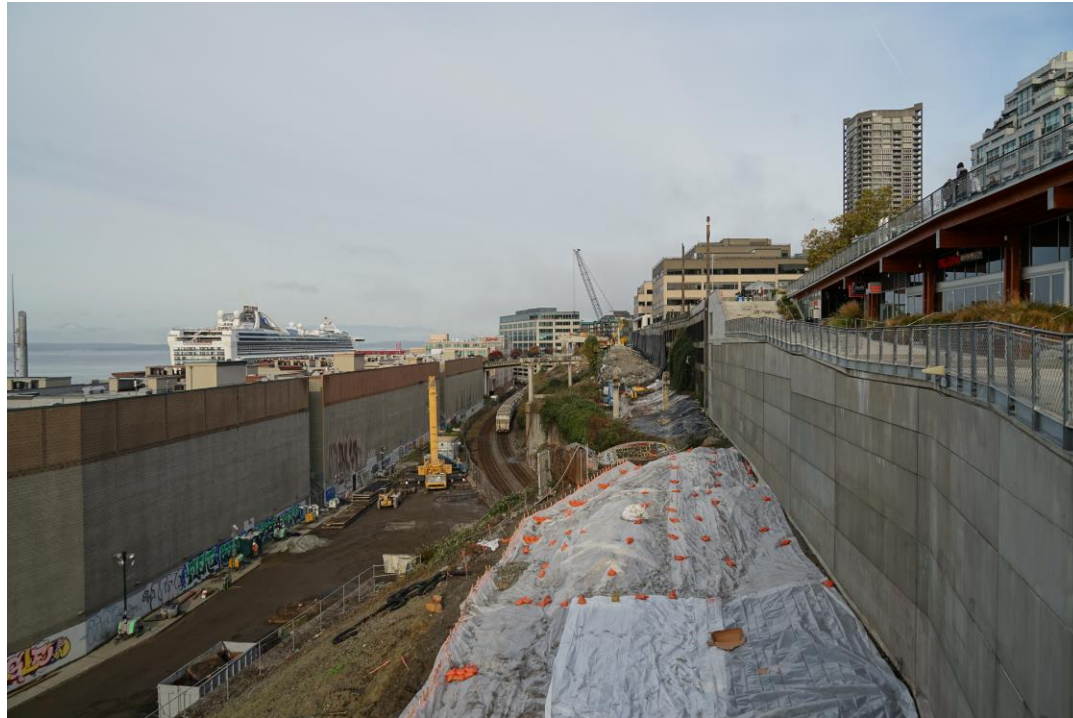


# CONSTRUCTION OF NEW ELLIOTT WAY



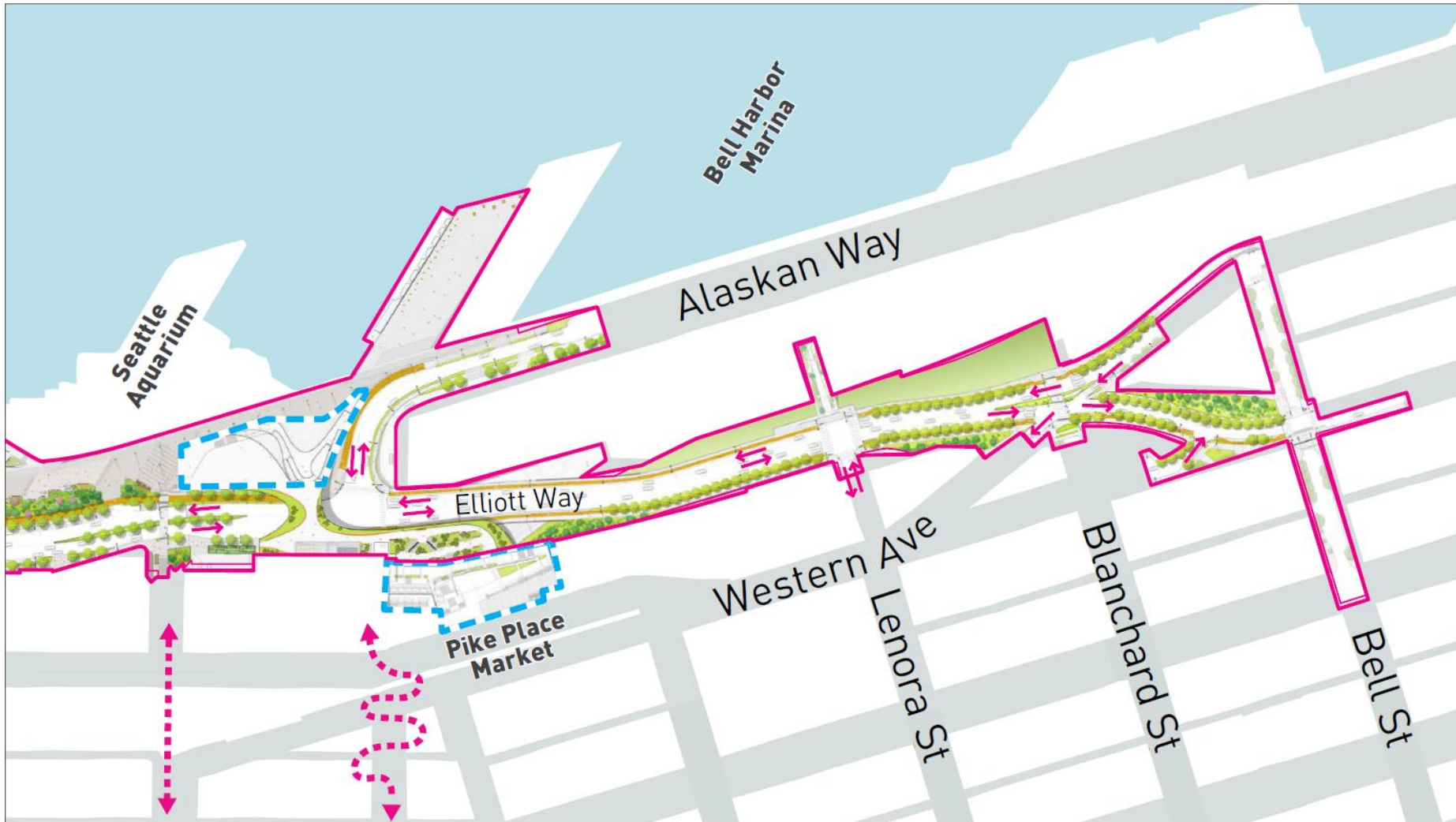


# CONSTRUCTION OF NEW ELLIOTT WAY





# FUTURE ELLIOTT WAY/PINE STREET





# EXPANDING WORK ON ALASKAN WAY





# CONSTRUCTION COMMUNICATIONS



- Early briefings to most affected stakeholders
- Ongoing briefings throughout construction efforts
- “Street team” outreach approach:
  - Advanced notifications
  - **Hotline staffed during active work: 206.499.8040**
  - Flyering
  - Refreshed website with construction focus
  - Weekly email updates
  - Social media updates
  - On-the-ground outreach
  - Physical wayfinding and informational banners
  - Construction maps
  - Real time text updates
- Continue updating multi-agency waterfront construction portal: [waterfrontconstruction.org](http://waterfrontconstruction.org)







## QUESTIONS?

Contact us at:

[info@waterfrontseattle.org](mailto:info@waterfrontseattle.org)

206.499.8040

[waterfrontseattle.org](http://waterfrontseattle.org)











# OPERATIONS AND MAINTENANCE



- Partnership between City and Friends of Waterfront Seattle to deliver a package of enhanced operations and maintenance:
  - Activities and events year round
  - Dedicated and specialized maintenance team
  - Managed spaces with full time concierge staff and private security
  - Additional concession and retail offerings
- Dedicated annual City budget of \$4.8 million (2023), private fundraising \$1-\$2 million
- Transparency and accountability to ensure the waterfront is a democratic and inclusive space

