



AWV Stakeholder Meeting

Angela Brady, PE, Deputy Director
October 22, 2019

WATERFRONT CONSTRUCTION: COMMITMENTS



- Provide access through waterfront area for all modes (transit, freight, bicycles, pedestrians, cars)
- Provide access to businesses and residents, including emergency response
- Maintain BNSF, Port cruise ships, and ferry operations
- Maintain major utilities service and reliability
- Provide short-term off-street low-rate parking
- Ensure construction sequencing balances the needs of all projects in the waterfront area
- Coordinate work zones and detour routes with all projects

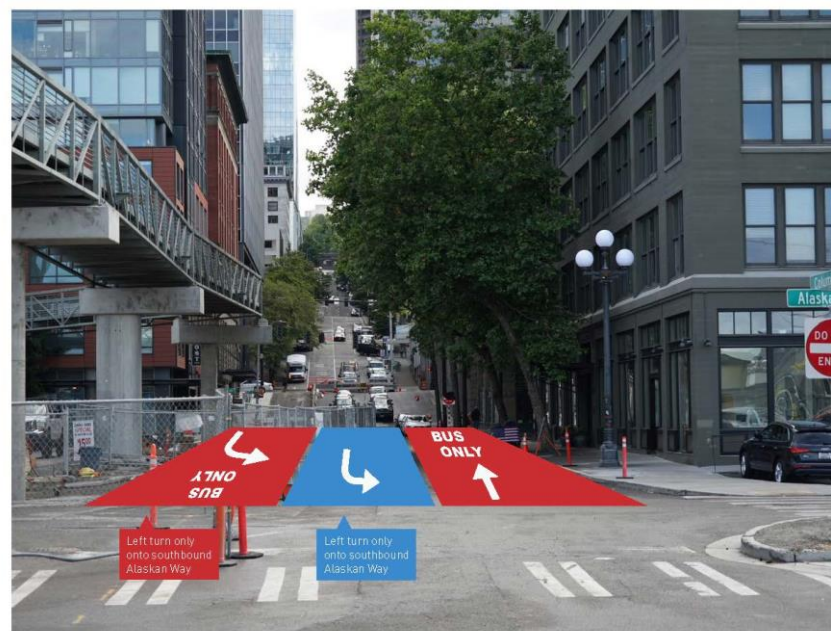
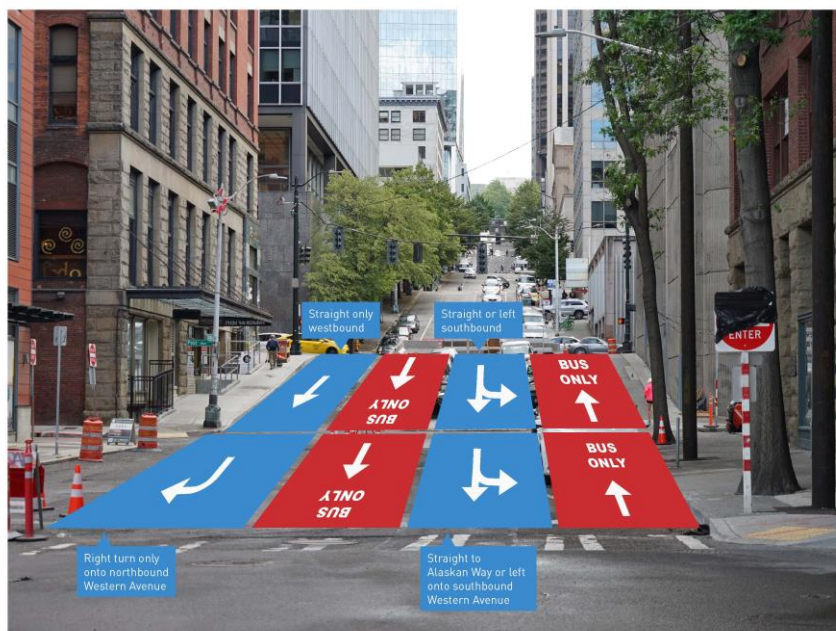
CONSTRUCTION



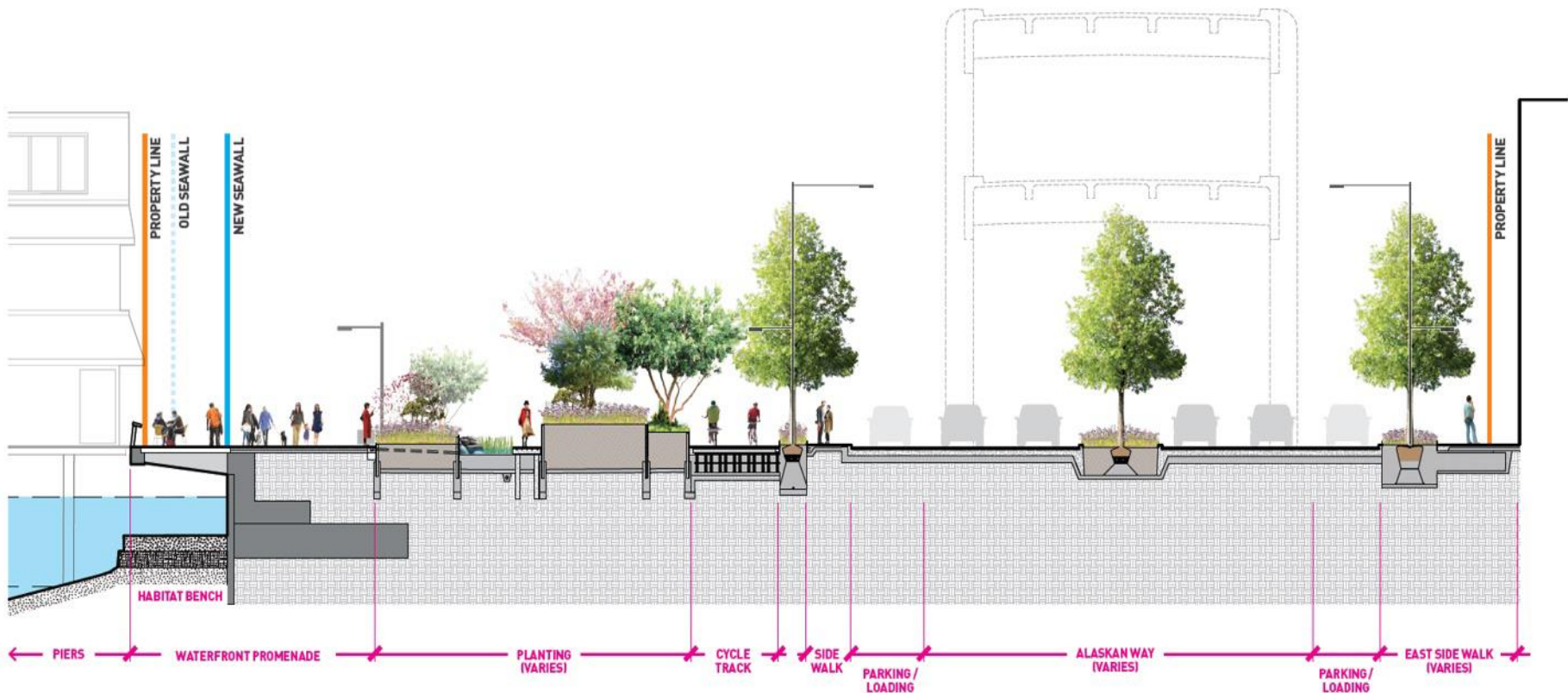
- Work on Columbia Street started in August 2019
- Work on the new Alaskan Way will be starting as early as the first week of November
- Initial work zones will span from King to Madison streets and potentially up to Pine Street by end of year



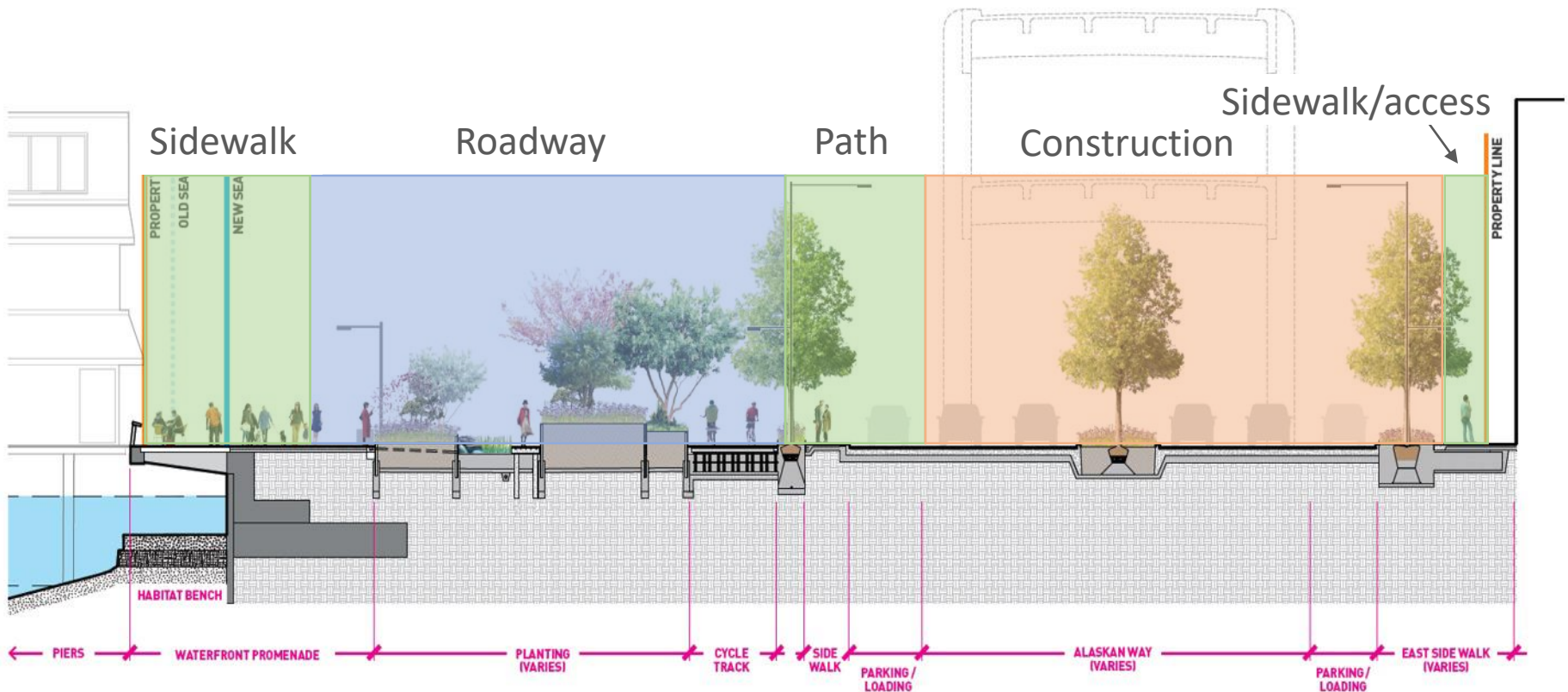
COLUMBIA STREET-TRANSIT PATHWAYS



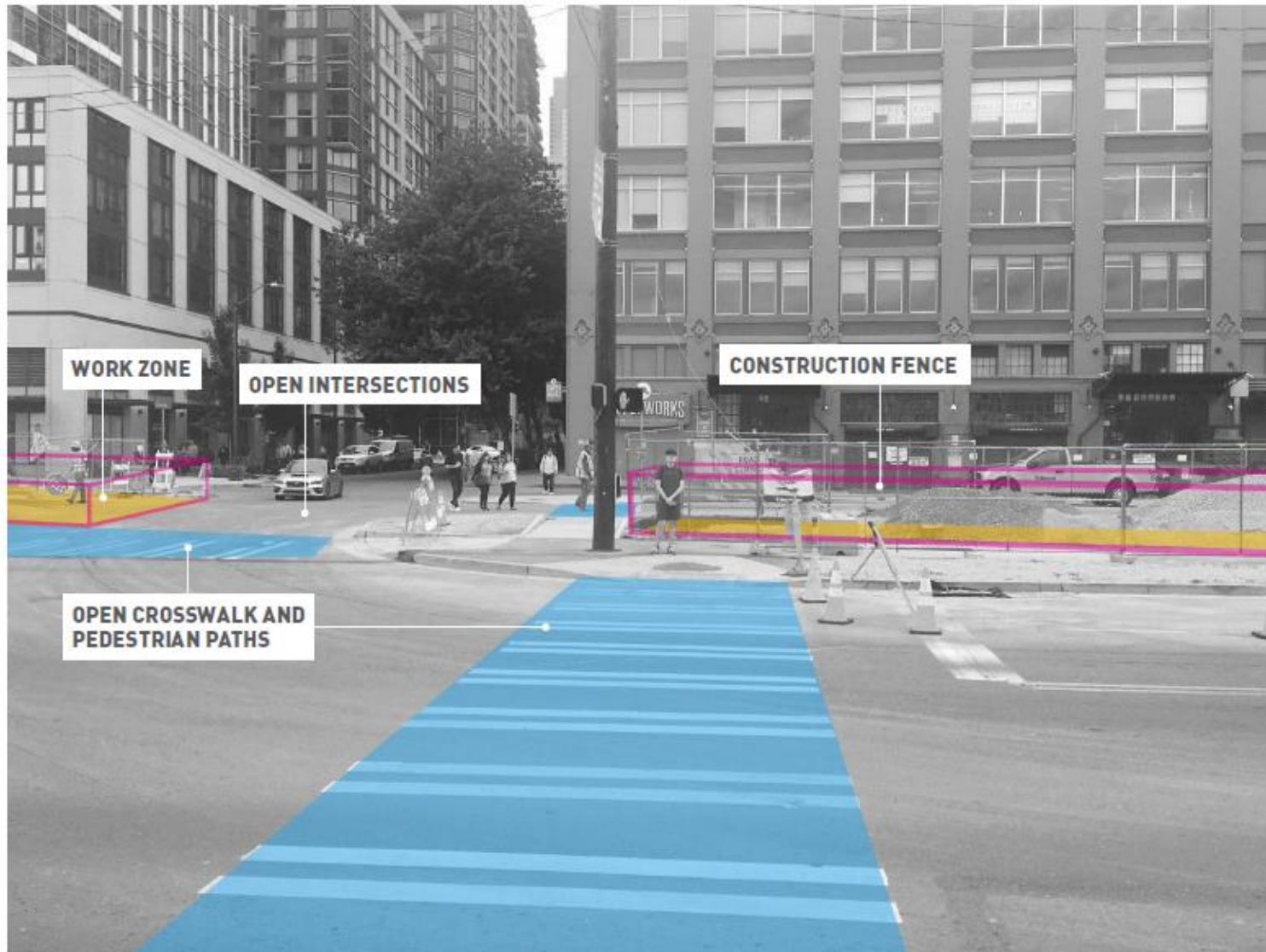
MAIN CORRIDOR –TYPICAL SEGMENT



TYPICAL WORK ZONE – YEAR 1



TYPICAL WORK ZONE



TYPICAL WORK ZONE



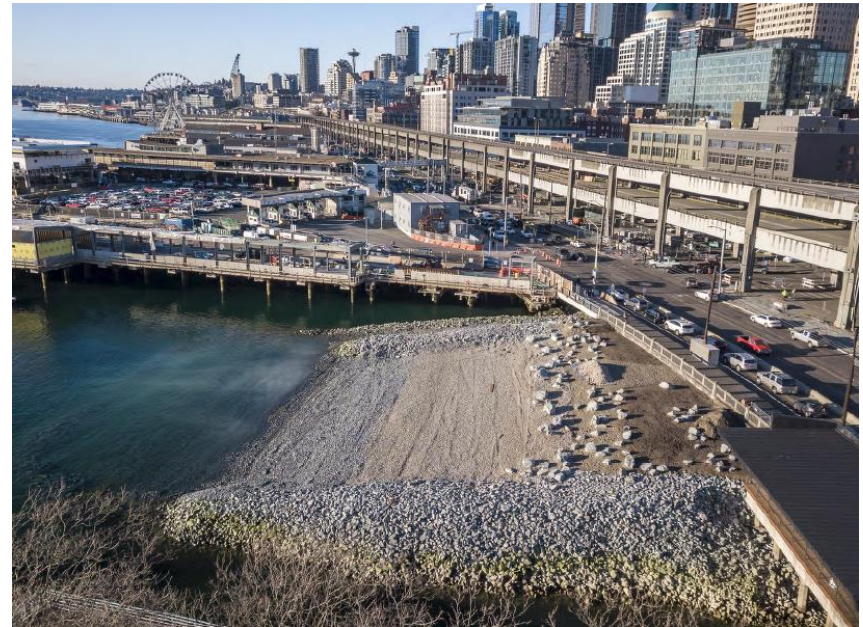
WALKING ROUTES: FIRST PHASE OF CONSTRUCTION



WHAT'S COMING UP



- New intertidal area between Colman Dock and Pier 48 will soon be home to more than 1,500 plants
- Construction of the new Alaskan Way will start to take shape in the footprint of the demolished viaduct
- Columbia Street will be rebuilt with two-way bus only lanes and sidewalk improvements by January 2020
- A newly built Pier 62 will open by early 2020



UPCOMING MEETINGS / OUTREACH



- Continued construction material distribution as work on Alaskan Way continues
- Briefings with stakeholders and other interested groups
- Meetings with other project partners
 - Aquarium, SHWA, PSQ, PPM, others as needed

EXAMPLE MATERIALS



NEW ALASKAN WAY CONSTRUCTION STARTING IN NOVEMBER

OCTOBER 2019

Waterfront Seattle will be building a new Alaskan Way in the footprint of the former viaduct. Starting as soon as the week of November 4, our initial work zones will span from 5 King to Marion streets. Activities include establishing work zones, mobilizing equipment, breaking pavement and excavation for utility installation.

WORK ZONES

- 5 King to Marion streets on Alaskan Way (see map)

SCHEDULE AND HOURS

- Monday through Friday, 7 AM to 5 PM
- Occasional overnight and weekend work

PEDESTRIAN AND VEHICLE

ACCESS

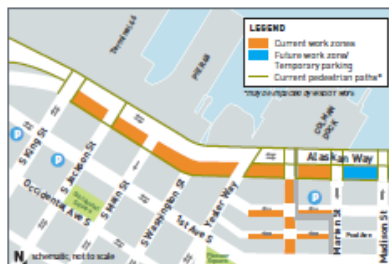
- Two vehicle lanes in each direction will remain open on Alaskan Way during the daytime hours
- Pedestrian access will be maintained to all business and residences
- Driveway access to all buildings will be maintained
- Lane closures on intersecting streets will be communicated in advanced

PARKING AND LOAD ZONES

- Minor parking restrictions on east/west streets near Alaskan Way
- Temporary parking areas created in the footprint of the former viaduct will be removed

EQUIPMENT AND NOISE

- Expect construction equipment and vehicles moving in and out of the work zone
- Construction trucks and equipment may be noisy; the most significant noise coming from breaking and removing the old road and from vacuum trucks locating utilities



Map of work zones

OTHER AREA PROJECTS

- Colman Dock is replacing aging structures and remodeling the passenger terminal and has localized sidewalk closures near the terminal through the end of October. Visit www.wsdot.wa.gov/Projects/Ferries/ColmanMultimodalTerminal for more information.
- Alaskan Way Viaduct demolition continues in areas. Visit the program website for more information, explore the demolition web tracker. You can call 1.888.298.5463 (option 1) to reach the project's 24/7 construction hotline.



Example of excavation for utility work.



SIGN UP FOR CONSTRUCTION UPDATE EMAILS

Sign up for our construction update email list at waterfrontseattle.org/construction-updates-mailing-list



TEXT SERVICE

Text "WFSCN" to 474747 to receive Waterfront construction text updates. Text messages will be sent if there are any changes not captured in our weekly email.



VISIT DOWNTOWNSEATTLEPARKING.ORG

Visit downtownseattleparking.org to find rates, hours and directions to thousands of parking spaces in the area.



WATERFRONTCONSTRUCTION.ORG

The Waterfront is going to be a busy place over the next several years. Visit waterfrontconstruction.org for more information on multiple projects compiled all in one place.

QUESTIONS?

If you have questions or would like more information about the Waterfront Seattle program, please call, email or visit our website.

206.499.8840
info@waterfrontseattle.org
waterfrontseattle.org

OCTOBER 2019

WATERFRONTSEATTLE.ORG



WATERFRONTSEATTLE.ORG

UPDATES IN AWW MEETINGS



- Waterfront will host these meetings starting in early 2020
 - More information will be provided closer to the next meeting regarding date, time, location



CONSTRUCTION COMMUNICATIONS



- Ongoing briefings throughout construction efforts
- “Street team” outreach approach:
 - Advanced notifications
 - **Hotline staffed during active work: 206.499.8040**
 - Flyering
 - Refreshed website with construction focus
 - Weekly email updates
 - Social media updates
 - On-the-ground outreach
 - Physical wayfinding and informational banners
 - Construction maps
 - Real time text updates
- Continue updating multi-agency waterfront construction portal: waterfrontconstruction.org





QUESTIONS?

info@waterfrontseattle.org
206.499.8040
waterfrontseattle.org