



ASSOCIATED GENERAL CONTRACTORS OF WASHINGTON

Jessica Murphy, PE
Construction Program Manager
September 17, 2019



WATERFRONT SEATTLE PROGRAM



SEAWALL PROJECT



SR 99 TUNNEL PROJECT



**SEATTLE MULTIMODAL TERMINAL AT
COLMAN DOCK PROJECT**



PARTNER PROJECTS

Project construction dates are tentative and
subject to change

ELLIOTT BAY

**OLYMPIC
SCULPTURE
PARK**

**Waterfront Seattle
(2018+)**

**Pier 62 Rebuild
(2017-2019)**

**Seattle Multimodal Terminal
at Colman Dock Project
(2017-2023)**

**Seawall Project
(2013-2017)**

**PIKE PLACE
MARKET**

BELLTOWN

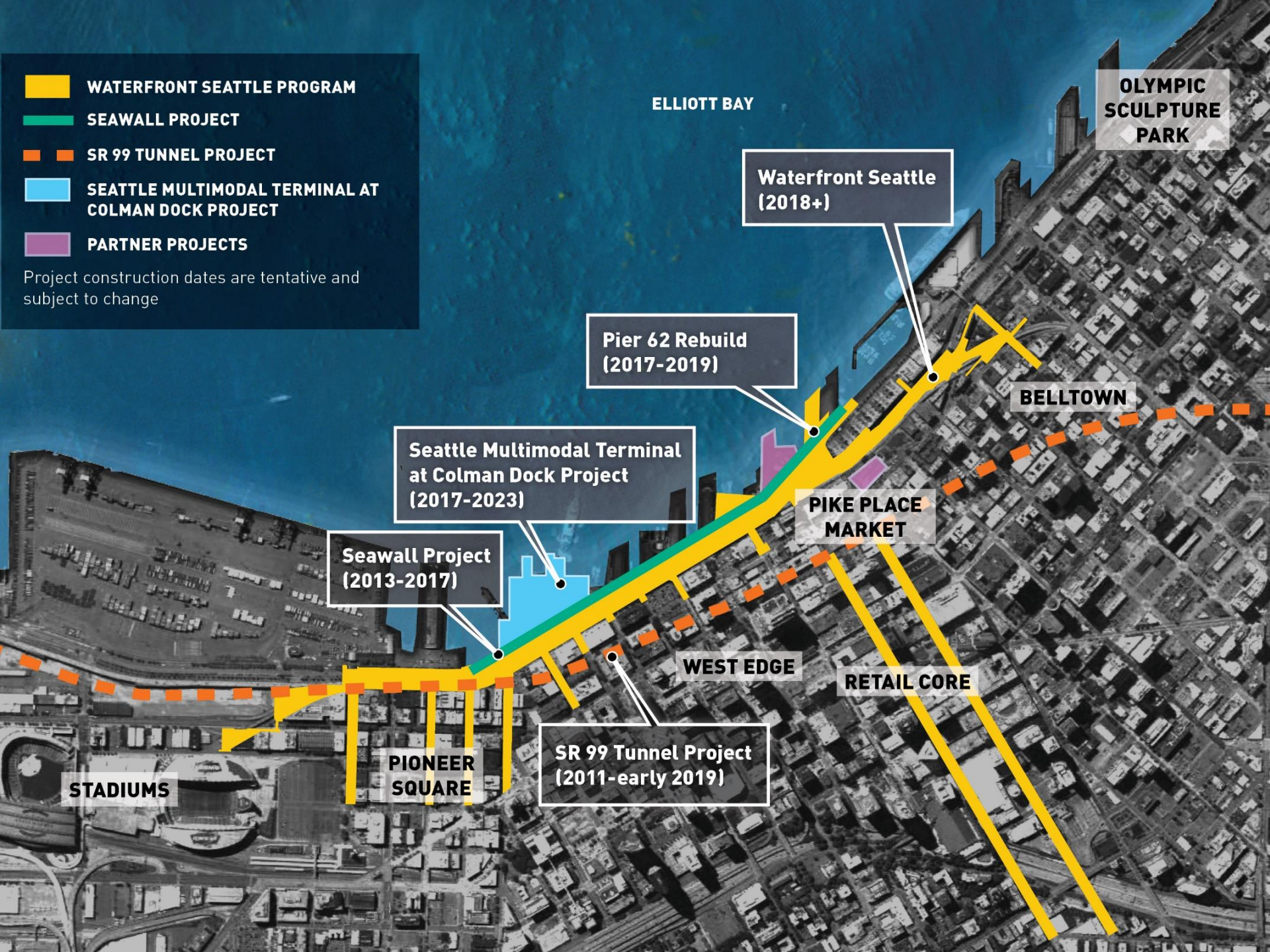
WEST EDGE

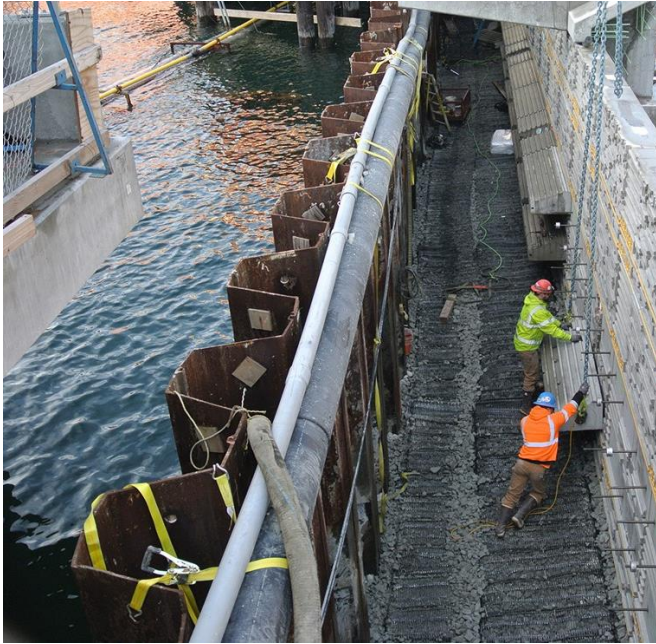
RETAIL CORE

**SR 99 Tunnel Project
(2011-early 2019)**

**PIONEER
SQUARE**

STADIUMS



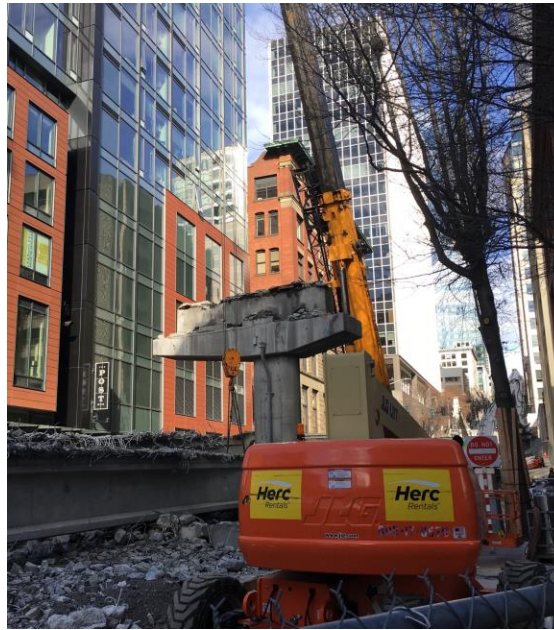


NEW SEAWALL COMPLETE
IN 2017



SR 99 TUNNEL OPEN TO TRAFFIC: FEBRUARY 4, 2019

Photos courtesy of WSDOT



ALASKAN WAY VIADUCT
DEMOLITION BEGAN:
FEBRUARY 11, 2019

WATERFRONT SEATTLE PROGRAM AREA



○ Waterfront Seattle Program Area

○ Related Projects

- 1 Railroad Way
- 2 Alaskan Way + Elliott Way
- 3 Pioneer Square Streets
- 4 Columbia Street
- 5 Marion Street Pedestrian Bridge
- 6 Seawall

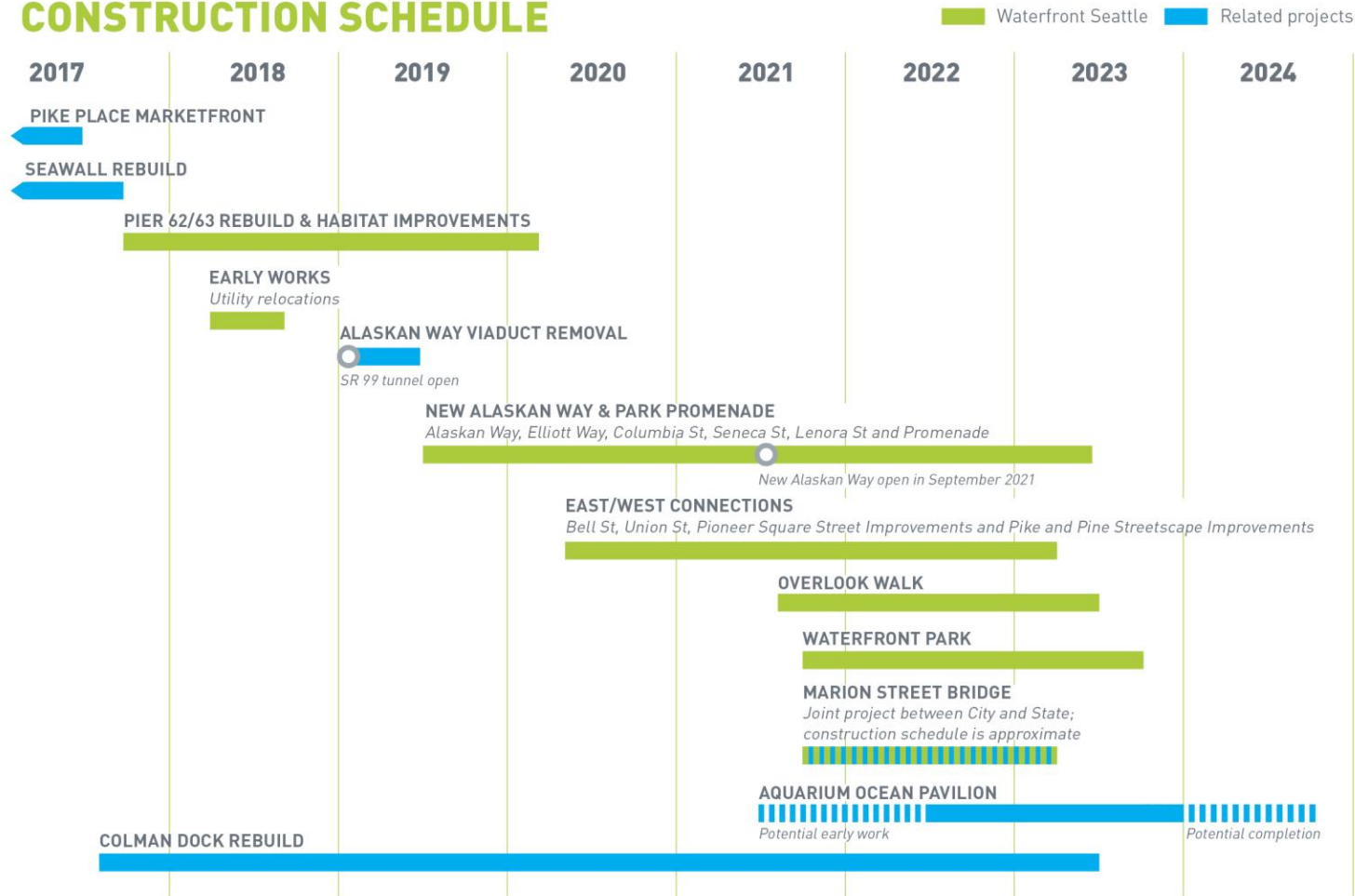
- 7 Seneca Street
- 8 Promenade
- 9 Union Street Elevator and Stairs
- 10 Waterfront Park
- 11 Protected bike lane
- 12 Seattle Aquarium expansion
- 13 Overlook Walk

- 14 Pike Pine Renaissance: Act One
- 15 Pier 62 Rebuild
- 16 Pike Place Market's MarketFront
- 17 Bell Street Park Extension

SCHEDULE

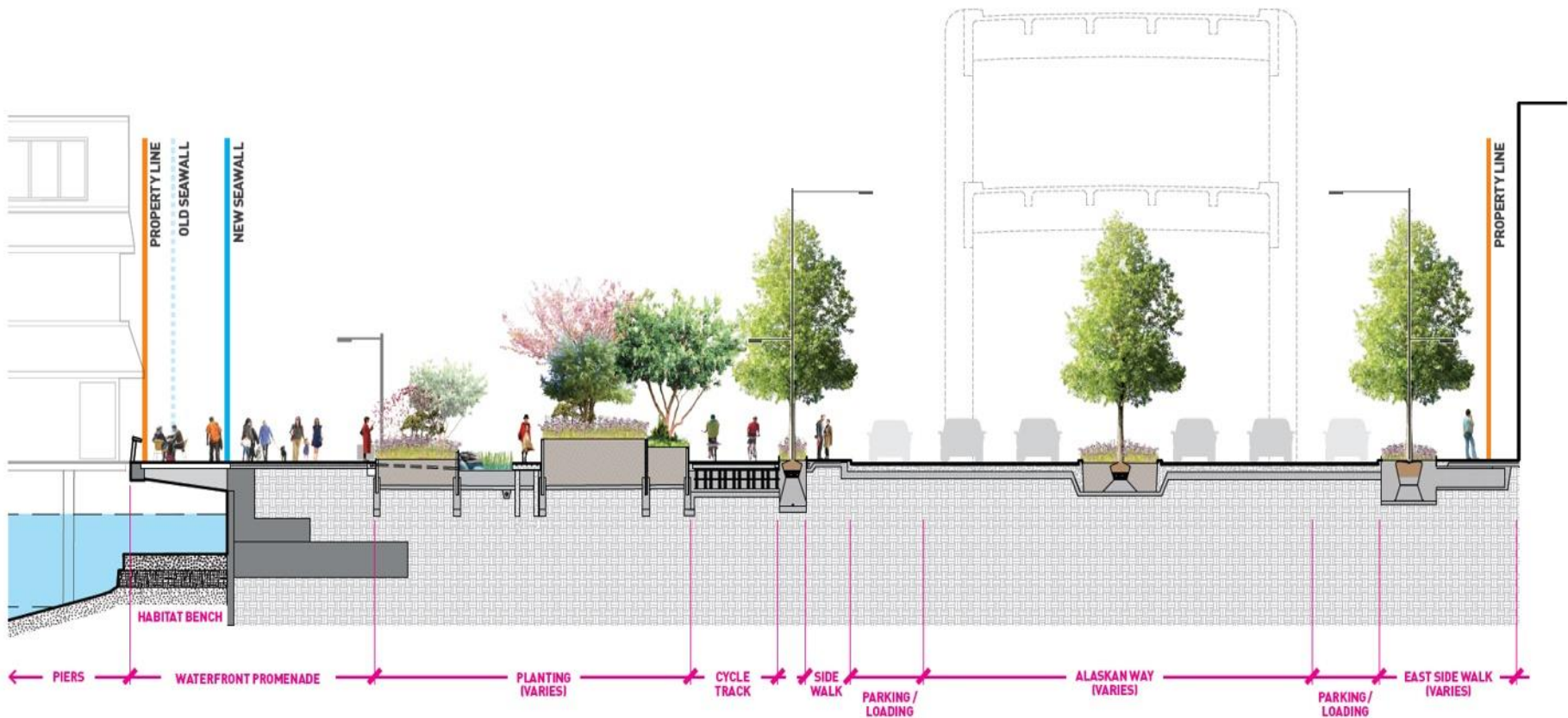


CONSTRUCTION SCHEDULE



NOTE: Construction dates subject to change pending: A. completion dates of new SR 99 tunnel and demolition of the Alaskan Way Viaduct; B. ongoing construction sequencing evaluation and assumptions for all projects

TYPICAL CROSS SECTION



ALASKAN WAY



PARK PROMENADE

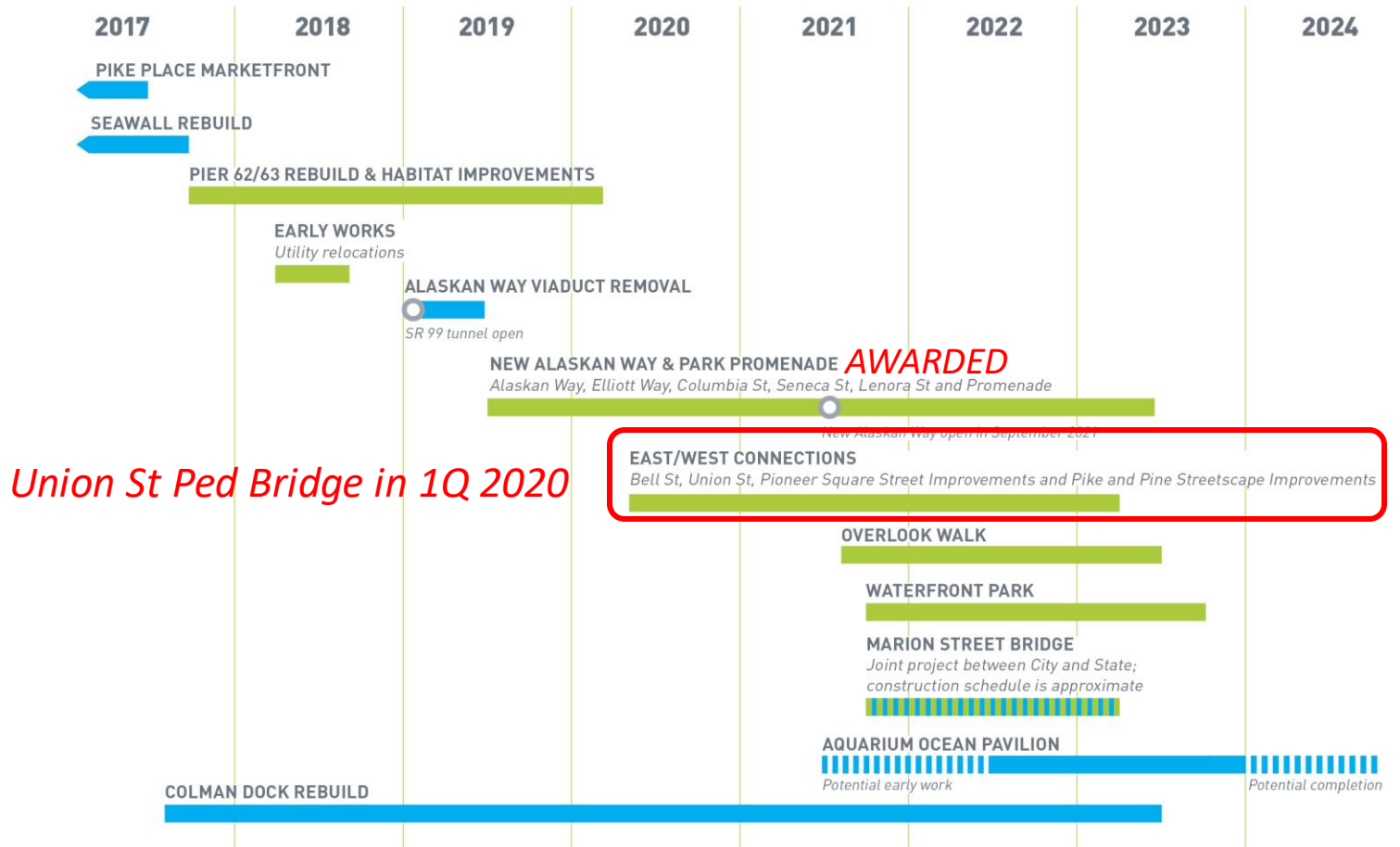


UPCOMING OPPORTUNITIES



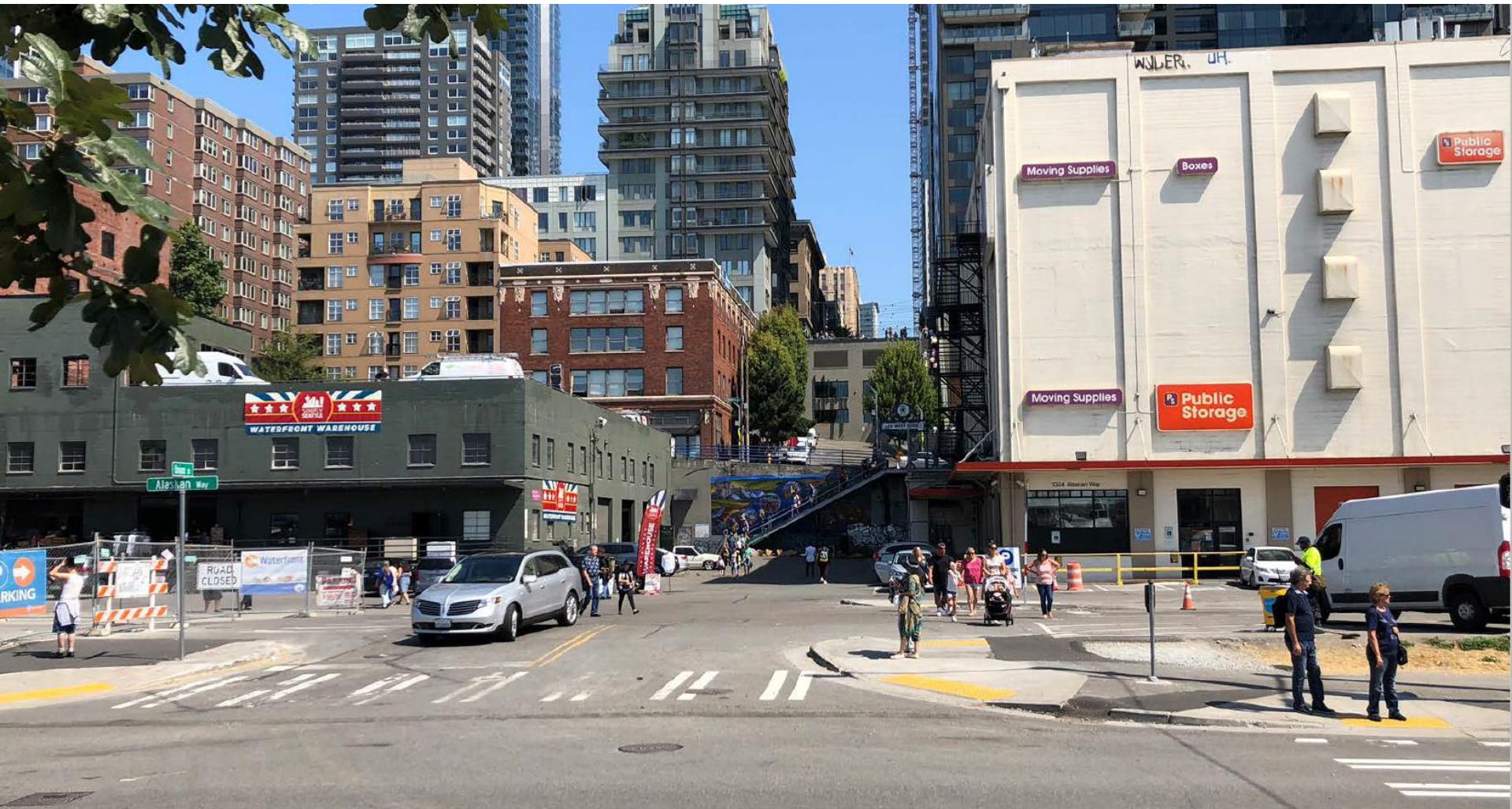
CONSTRUCTION SCHEDULE

Waterfront Seattle Related projects

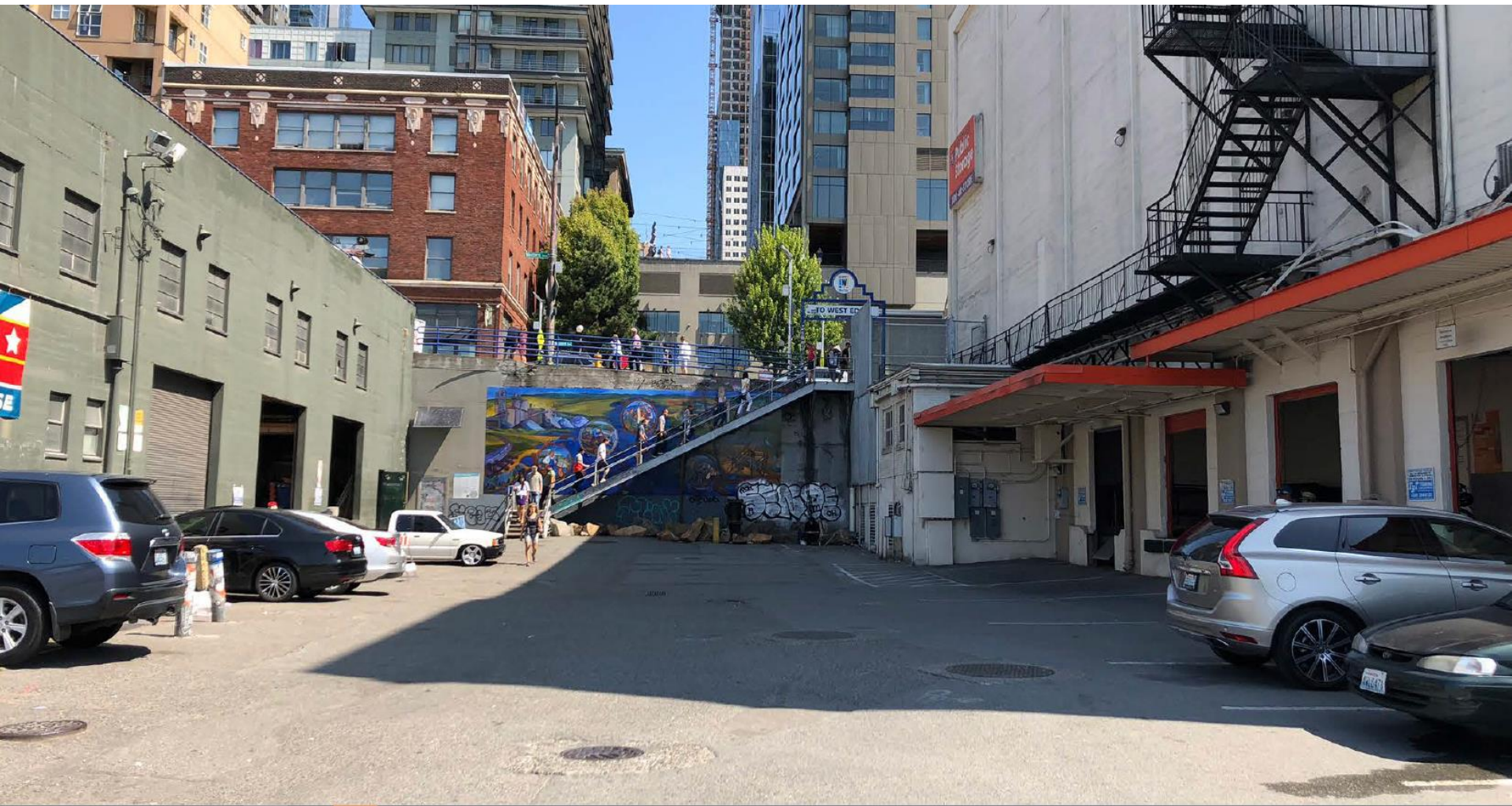


NOTE: Construction dates subject to change pending: A. completion dates of new SR 99 tunnel and demolition of the Alaskan Way Viaduct; B. ongoing construction sequencing evaluation and assumptions for all projects

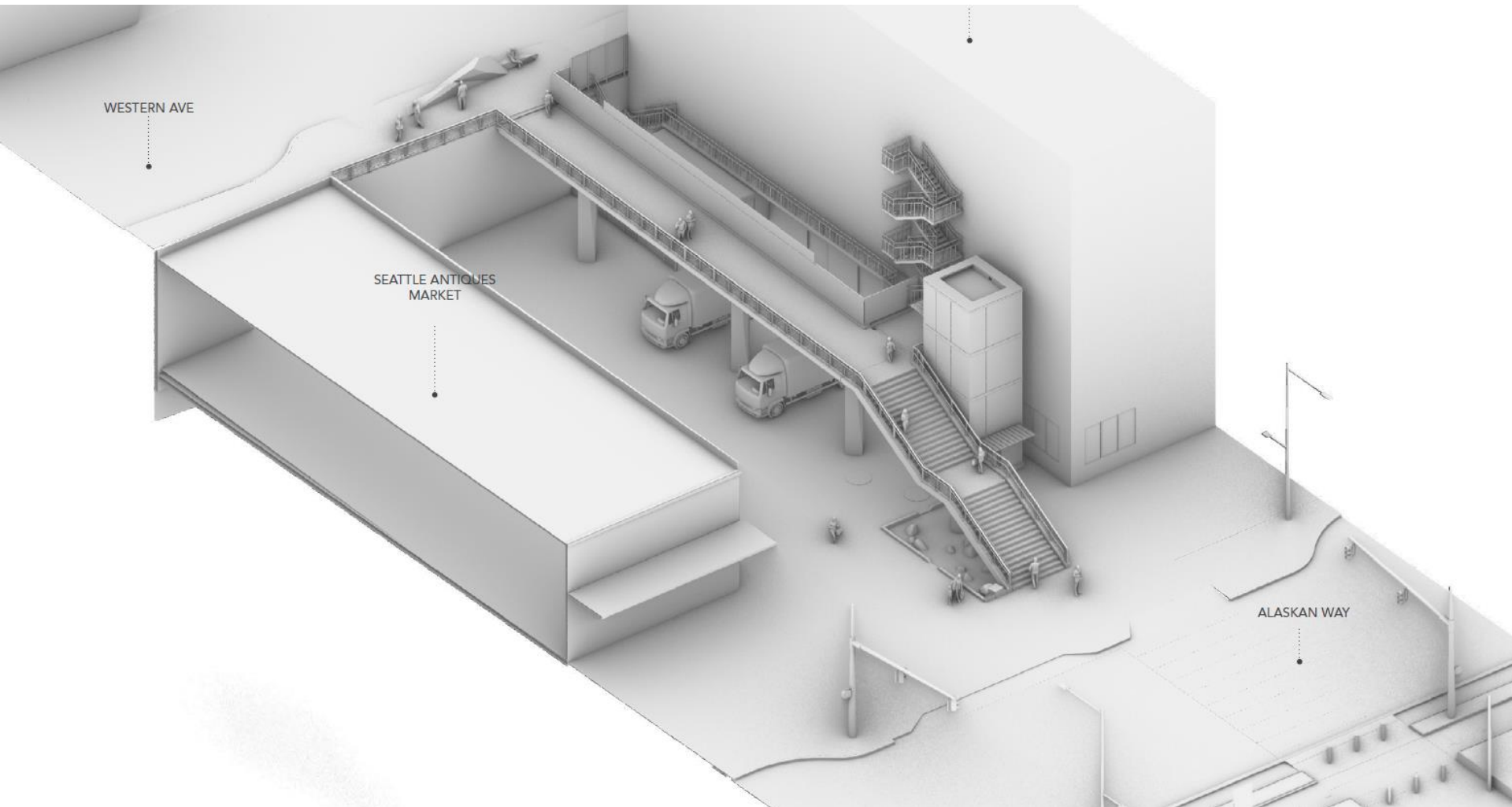
UNION STREET ELEVATOR AND STAIRS



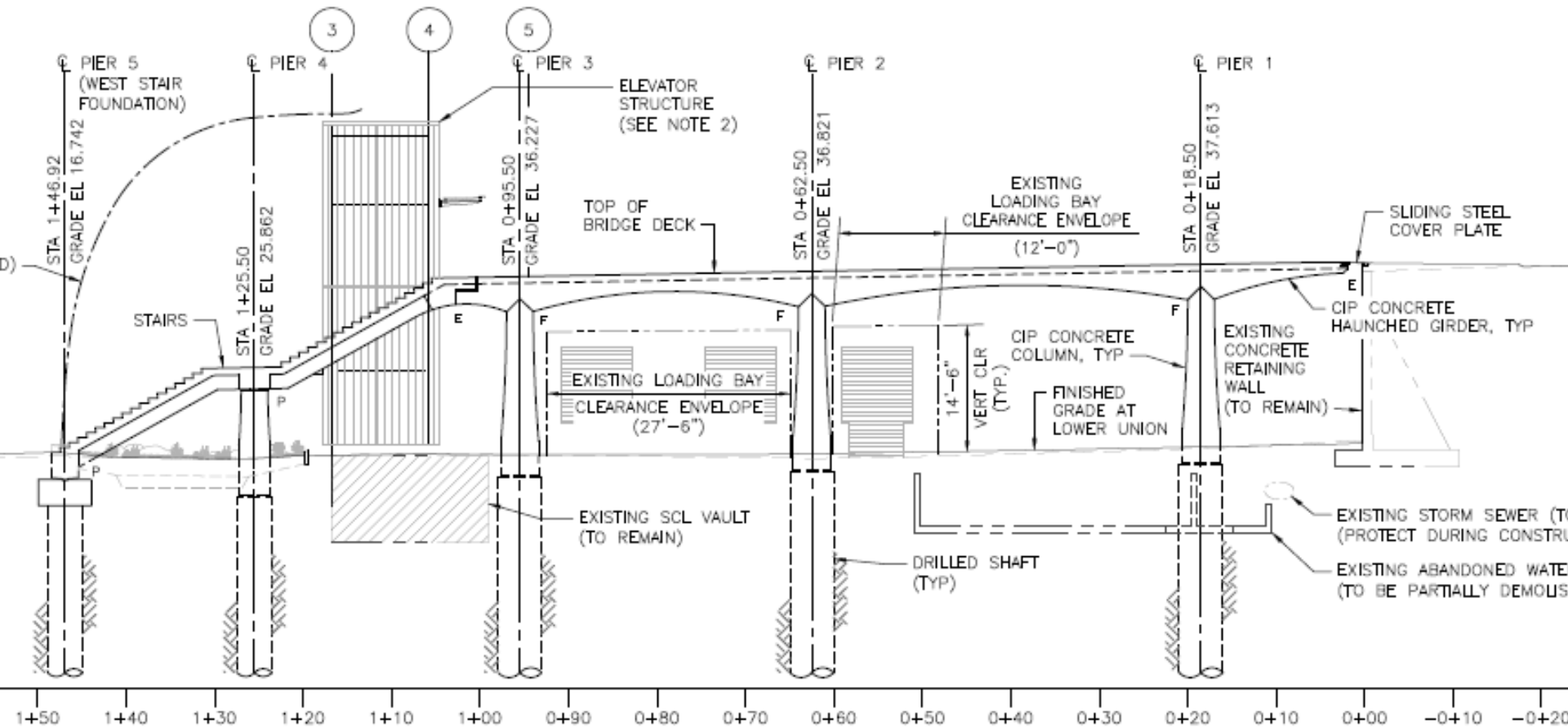
UNION STREET ELEVATOR AND STAIRS



UNION STREET ELEVATOR AND STAIRS



UNION STREET ELEVATOR AND STAIRS



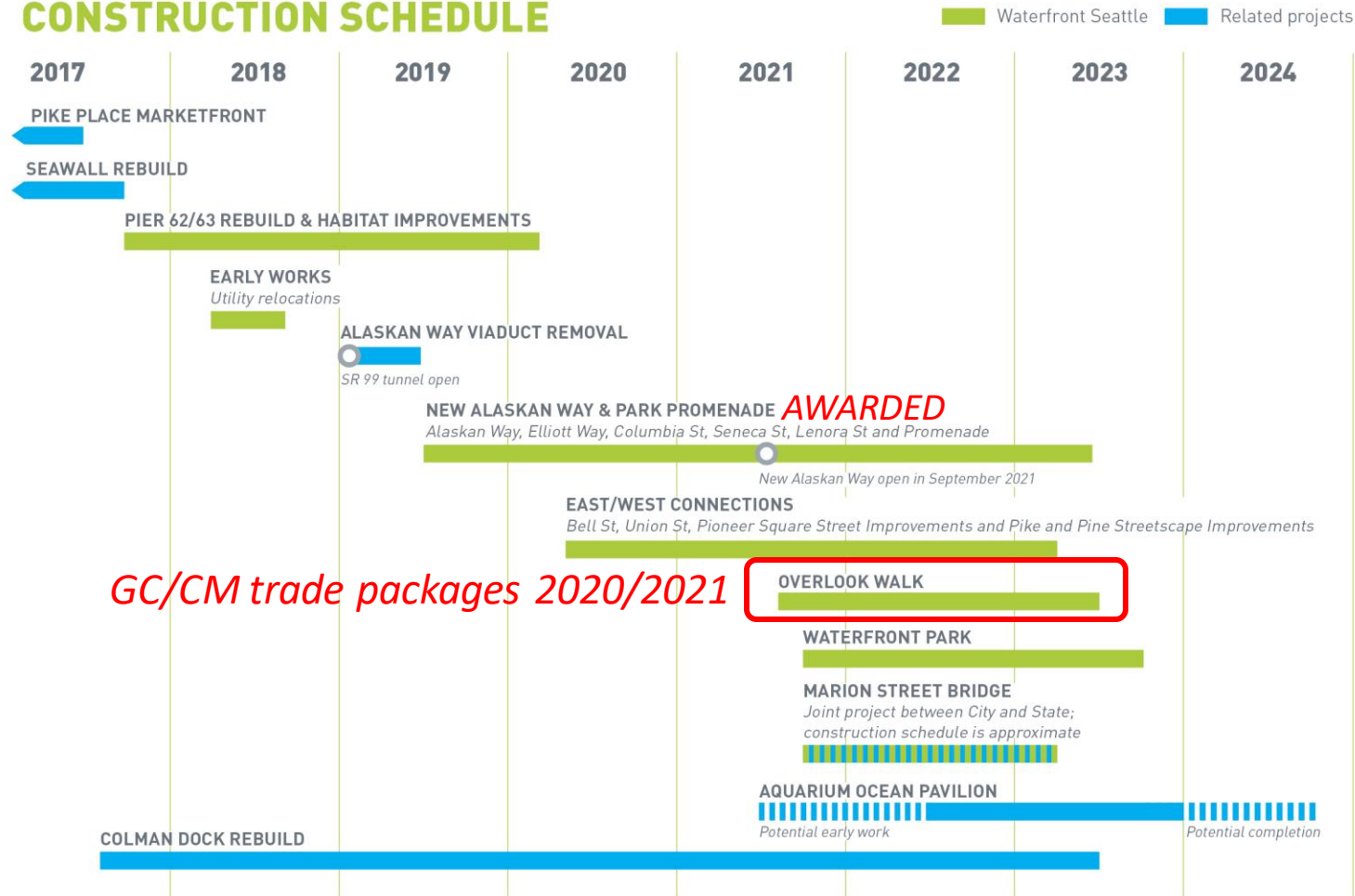
UNION STREET ELEVATOR AND STAIRS



UPCOMING OPPORTUNITIES

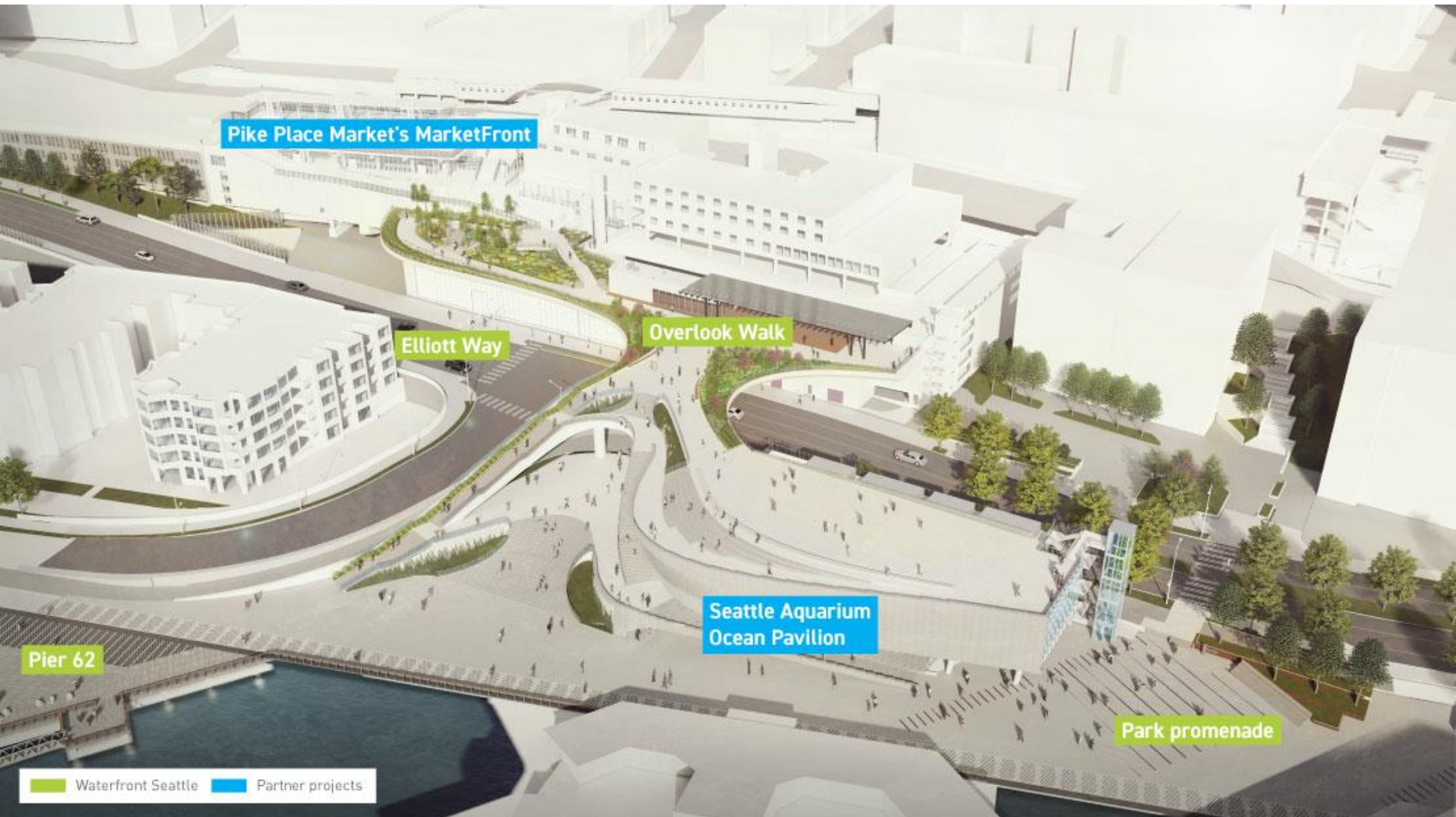


CONSTRUCTION SCHEDULE



NOTE: Construction dates subject to change pending: A. completion dates of new SR 99 tunnel and demolition of the Alaskan Way Viaduct; B. ongoing construction sequencing evaluation and assumptions for all projects

OVERLOOK WALK



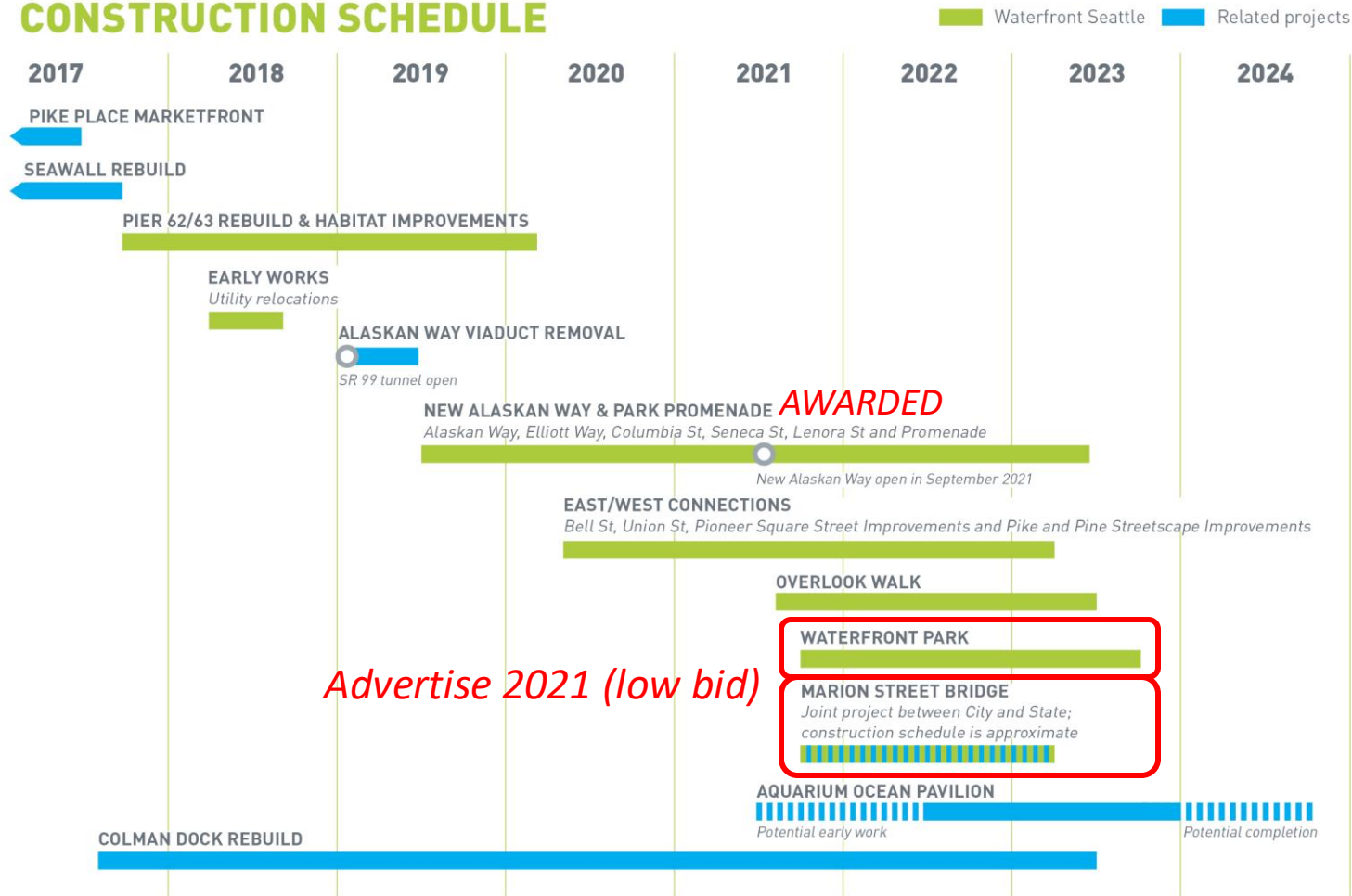
OVERLOOK WALK



UPCOMING OPPORTUNITIES



CONSTRUCTION SCHEDULE



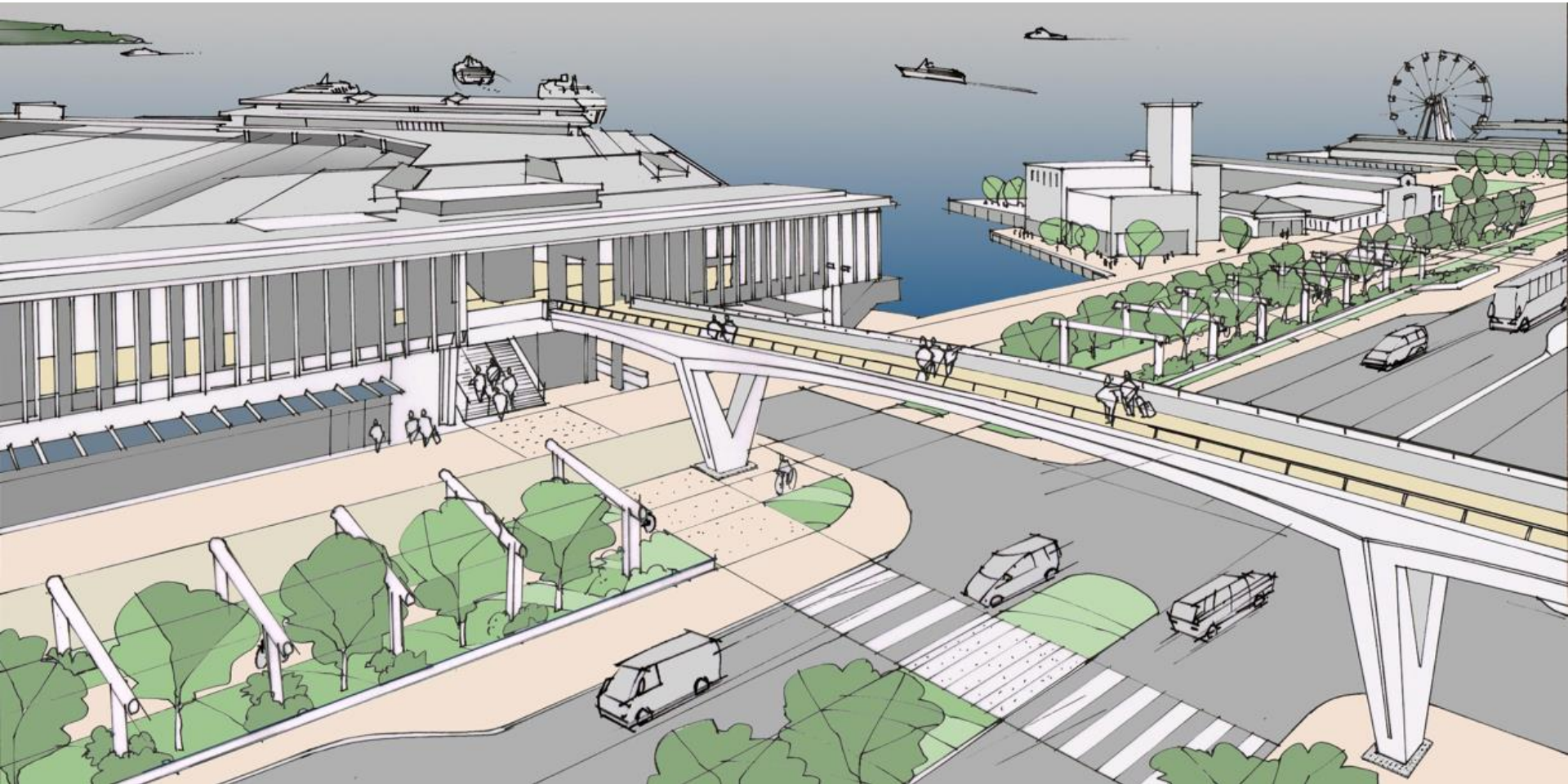
Advertise 2021 (low bid)

NOTE: Construction dates subject to change pending: A. completion dates of new SR 99 tunnel and demolition of the Alaskan Way Viaduct; B. ongoing construction sequencing evaluation and assumptions for all projects

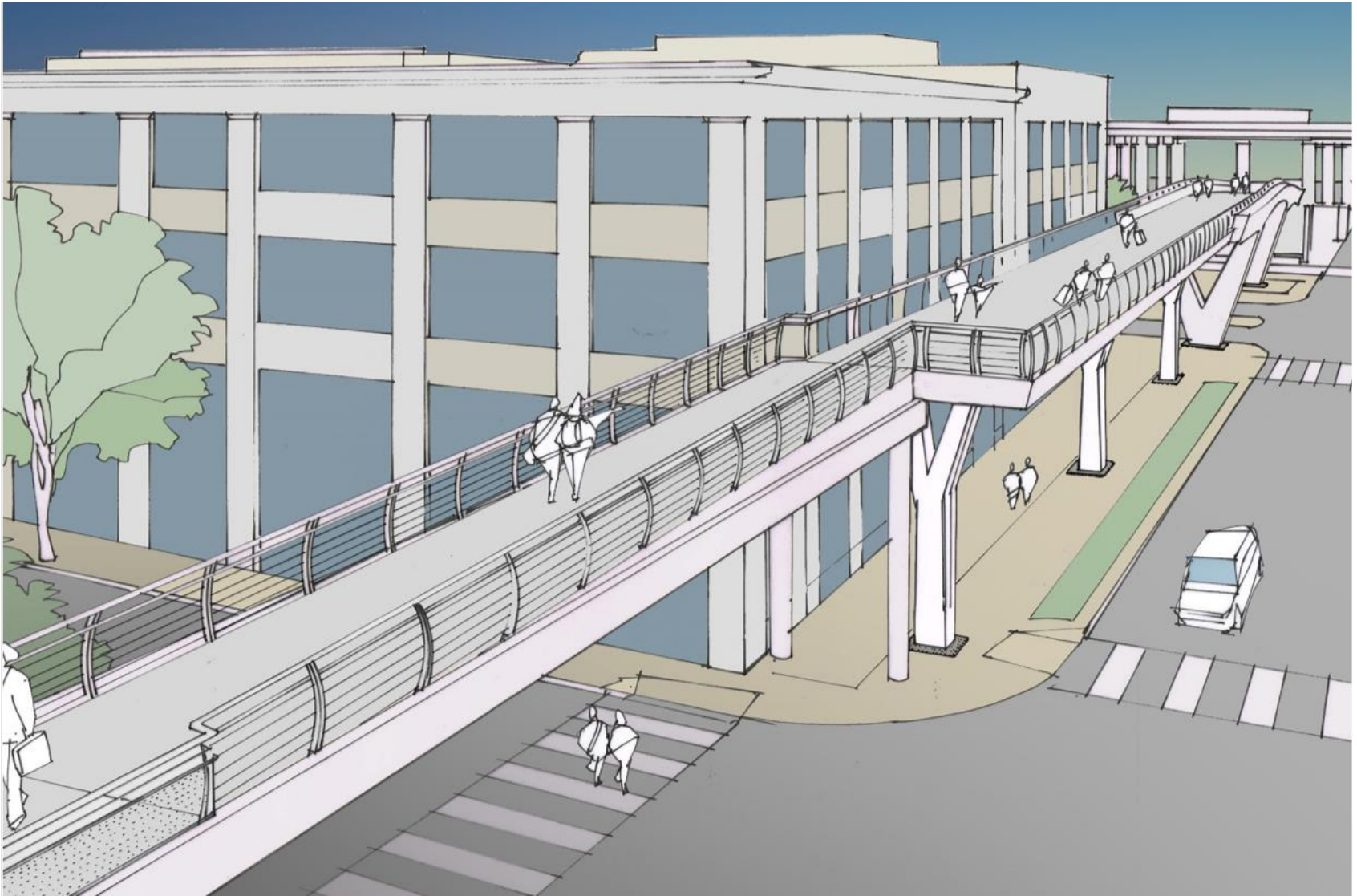
WATERFRONT PARK(PIER 58)



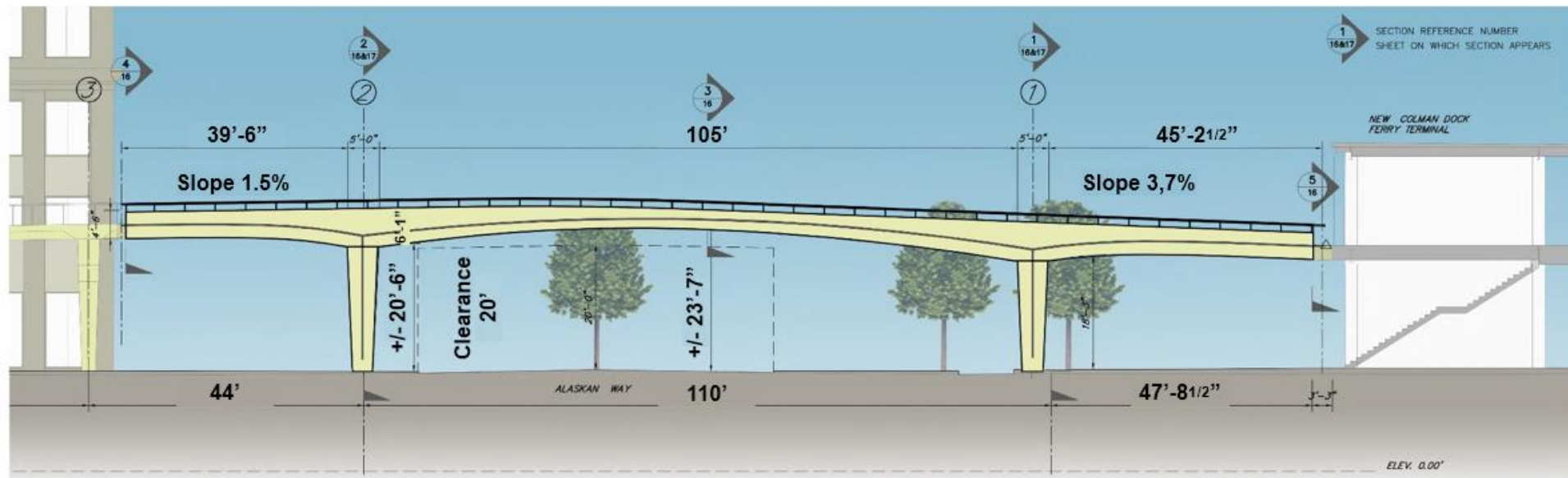
MARION ST BRIDGE



MARION ST BRIDGE



MARION ST BRIDGE



UPCOMING OPPORTUNITIES



Project Name	Engineer's Estimate	Estimated Ad Date
Alaskan Way Main Corridor	\$189M	AWARDED
Union St Pedestrian Bridge	\$7-8M	Q1 2020
Overlook Walk (GC/CM)	~ \$5M & under trade packages	2020-21 trade packages
Marion St Pedestrian Bridge	\$7 – 9M	Q1 2021
Pike and Pine Streetscape Improvements	\$10 – 15M	Q1 2021
Waterfront Park (Pier 58)	\$35 – 45M	Q1 2021
Pioneer Square Street Improvements	\$8 – 10M	Q1 2021







QUESTIONS?

Contact us at:

info@waterfrontseattle.org

206.499.8040

waterfrontseattle.org