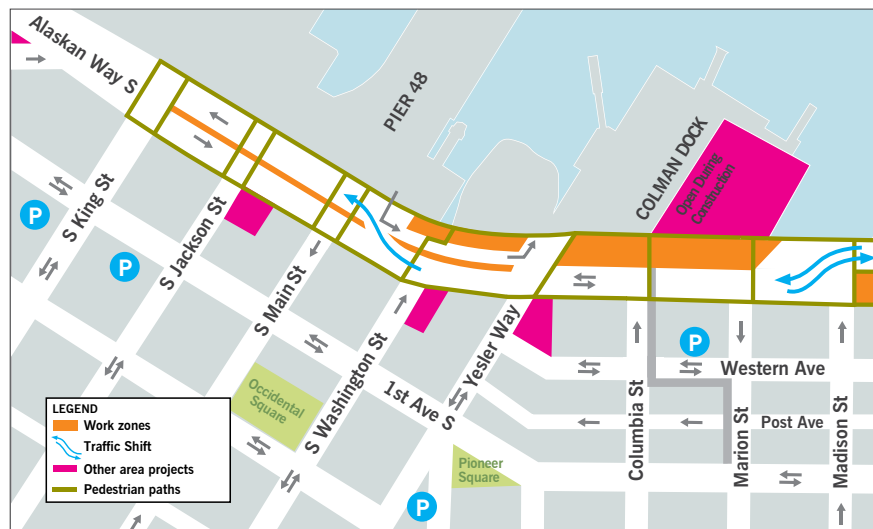




# TRAFFIC SHIFT TO NEW SOUTHBOUND LANES ON ALASKAN WAY

Starting the evening of Friday, November 12 (weather permitting) and continuing through the weekend, Alaskan Way will be reduced to one lane each direction between S King and Columbia streets to move southbound traffic onto new concrete lanes! By Monday morning, November 15, shifting southbound traffic onto new concrete lanes, opening a new southbound transit lane, and opening new sidewalks and a bike path on the west side of Alaskan Way will be completed.



Map of work zones.

Also beginning as early as Monday, November 15, and continuing for several months, new work will begin on the east side of Alaskan Way to retrofit newly installed utility poles with 4G and 5G technology initiated by wireless carriers. While it can be frustrating to see more work occur in areas recently completed, this effort will reduce potential long-term impacts and it can be done without major traffic disruptions to Alaskan Way. North of Columbia St, Alaskan Way travel lanes and our work zone areas will remain as they are for now.

## WHAT TO EXPECT ON ALASKAN WAY:

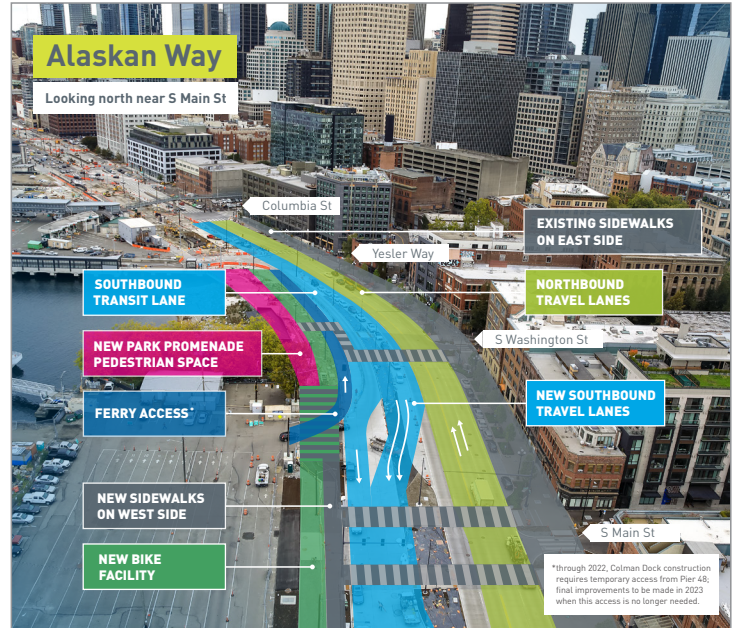
### Over the weekend of Nov 12-14:

- One lane each direction on Alaskan Way S between S King and Columbia streets
- Nighttime work
- Traffic signal outages – watch for signals in red flashing mode and uniformed officers directing traffic



### Opening Nov 15:

- A southbound transit lane between S King and Columbia streets
- New bike path between S King St and Yesler Way
- New sidewalks on the west side of the road between S King St and Yesler Way
- New east-west crosswalks across Alaskan Way S at S Main and S Washington streets
- The first part of the new park promenade to be constructed between S Washington St and Yesler Way



New traffic lane configuration on Alaskan Way.



### SIGN UP FOR CONSTRUCTION UPDATE EMAILS

Sign up for our construction update email list at [waterfrontseattle.org/construction-updates-mailing-list](http://waterfrontseattle.org/construction-updates-mailing-list).



### VISIT DOWNTOWNSEATTLEPARKING.ORG

Visit [downtownseattleparking.org](http://downtownseattleparking.org) to find rates, hours and directions to thousands of parking spaces in the area.



### WATERFRONTCONSTRUCTION.ORG

The Waterfront is going to be a busy place over the next several years. Visit [waterfrontconstruction.org](http://waterfrontconstruction.org) for more information on multiple projects compiled all in one place.

### QUESTIONS?

If you have questions or would like more information about the Waterfront Seattle program, please call, email or visit our website.

206.499.8040  
[info@waterfrontseattle.org](mailto:info@waterfrontseattle.org)  
[waterfrontseattle.org](http://waterfrontseattle.org)

