

# RESTROOM CONCEPT DESIGN

SEATTLE DESIGN COMMISSION

MAY 20TH, 2021



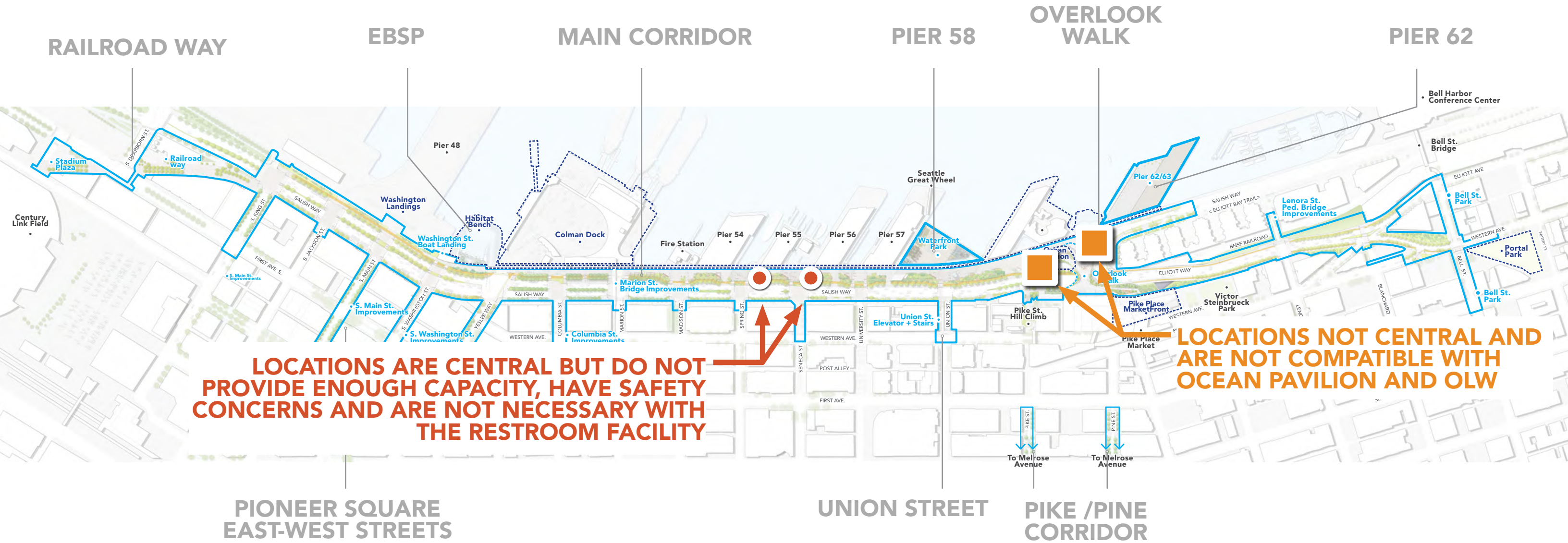


# INTRODUCTION

# INTRODUCTION

## WATERFRONT PROGRAM

-  PREVIOUS RESTROOM LOCATION STUDIES
-  FORMER "PORTLAND LOO" LOCATIONS

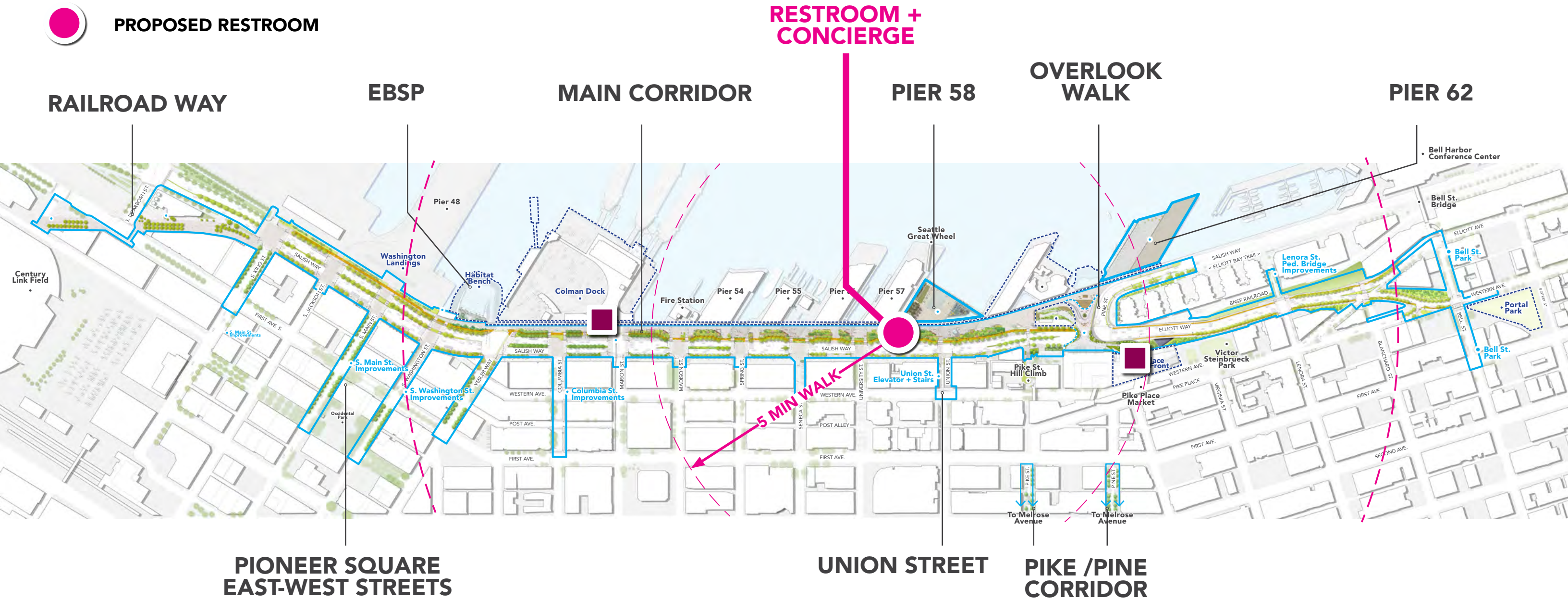




# INTRODUCTION

## WATERFRONT PROGRAM




-  EXISTING RESTROOMS
-  PROPOSED RESTROOM

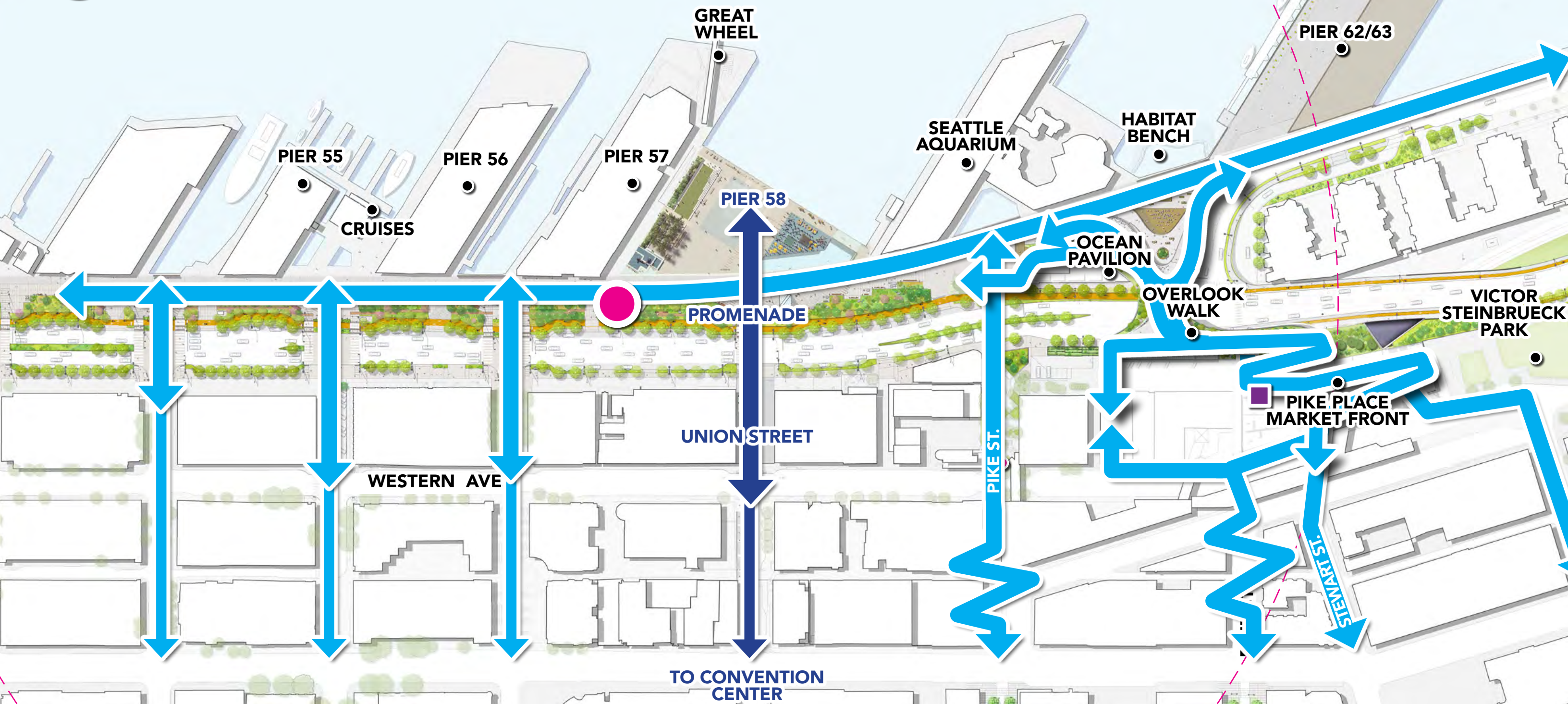




# INTRODUCTION

## CENTRAL PUBLIC OPEN SPACE

-  ACCESS WAYS
-  EXISTING RESTROOMS
-  PROPOSED RESTROOM





**INTRODUCTION**  
PROMENADE



**PROMENADE BOARDWALK**



**SOCIAL INTERSECTIONS**



**UNION STREET IMPROVEMENTS**



**PUBLIC ART**



**GOALS**



# GOALS

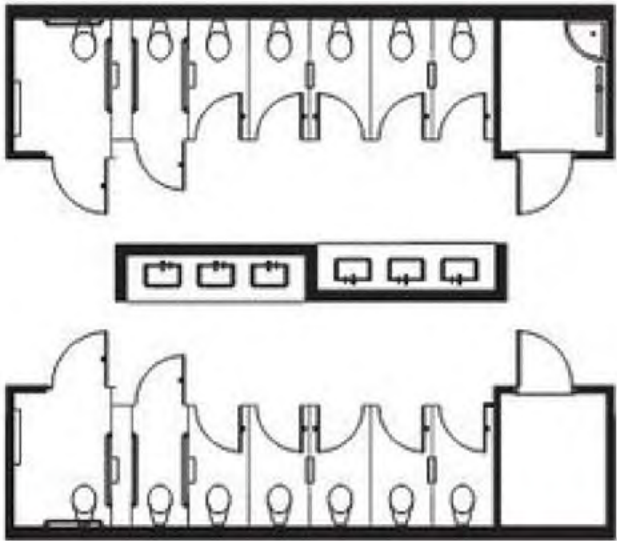
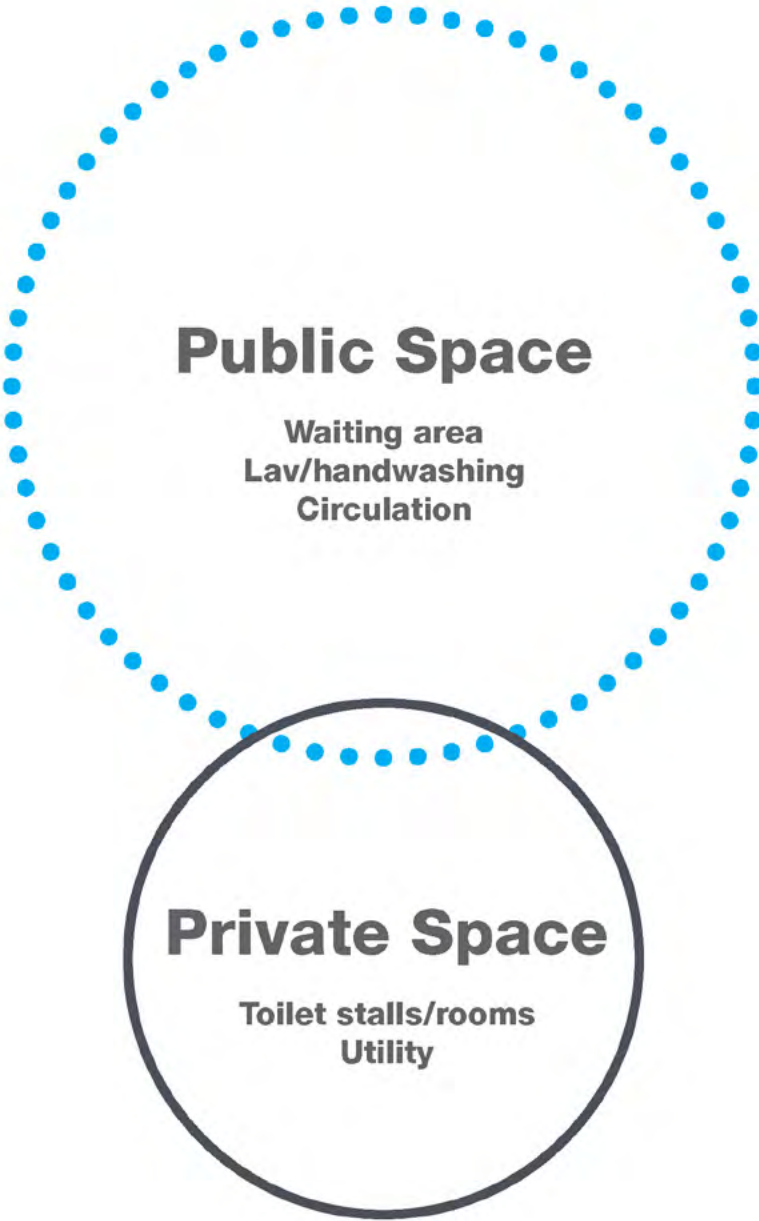
## DESIGN BRIEF

- Provide a welcoming, safe and clean facility, with attending personnel (concierge) during open hours, to enhance the visitor experience for the diverse users of the Waterfront.
- Ensure that the facility serves visitors of all ages and abilities.
- Express the unique character of the waterfront as well as the historic and cultural background of the site.
- Provide a fun, relaxing atmosphere for families while waiting, and provide visibility to Pier 58 and especially the Play Area.
- Take advantage of technological solutions to provide hands-free door and fixture operations. Consider automatic cleaning and sanitizing systems that could be operated multiple times per day to reassure users of overall cleanliness and care.



# GOALS

## PUBLIC AND PRIVATE SPACE



A layered approach to the restroom design would emphasize the quality and size of public space over the quantity of plumbing fixtures.



# GOALS

## VIEWS AND SIGHT LINES



The Concierge Office needs to be clearly visible from surrounding environments outside of the facility, while also providing unobstructed sightlines to all areas within the facility to enhance the feeling of safety and security for all.





# GOALS

## ALL GENDER RESTROOMS



Tongva Park -  
Santa Monica, CA  
Shared lavs  
Natural ventilation + daylight  
Privacy screening  
Waiting area  
Security gates



Bicycle Path  
- Ecatepec, Mexico  
Shared lavs  
Waiting areas  
Natural ventilation + daylight  
Integrated landscape



Clover Park - Santa Monica, CA  
Shared lavs  
Natural ventilation + daylight  
Privacy screening/ Views out  
Full height stall walls w/minimal space below door  
Bright colors



# INITIAL IDEAS



# INITIAL IDEAS

## INTEGRATION INTO PROMENADE AND PIER 58

- 1 GROVE + LAWN
- 2 FITZGERALD FOUNTAIN
  - FOUNTAIN BASIN:
  - SPILL OUT SPACE:
- 3 OPEN AREA
- 4 WATER'S EDGE
- 5 PLAY AREA
- 6 NEAR-SHORE OPENING



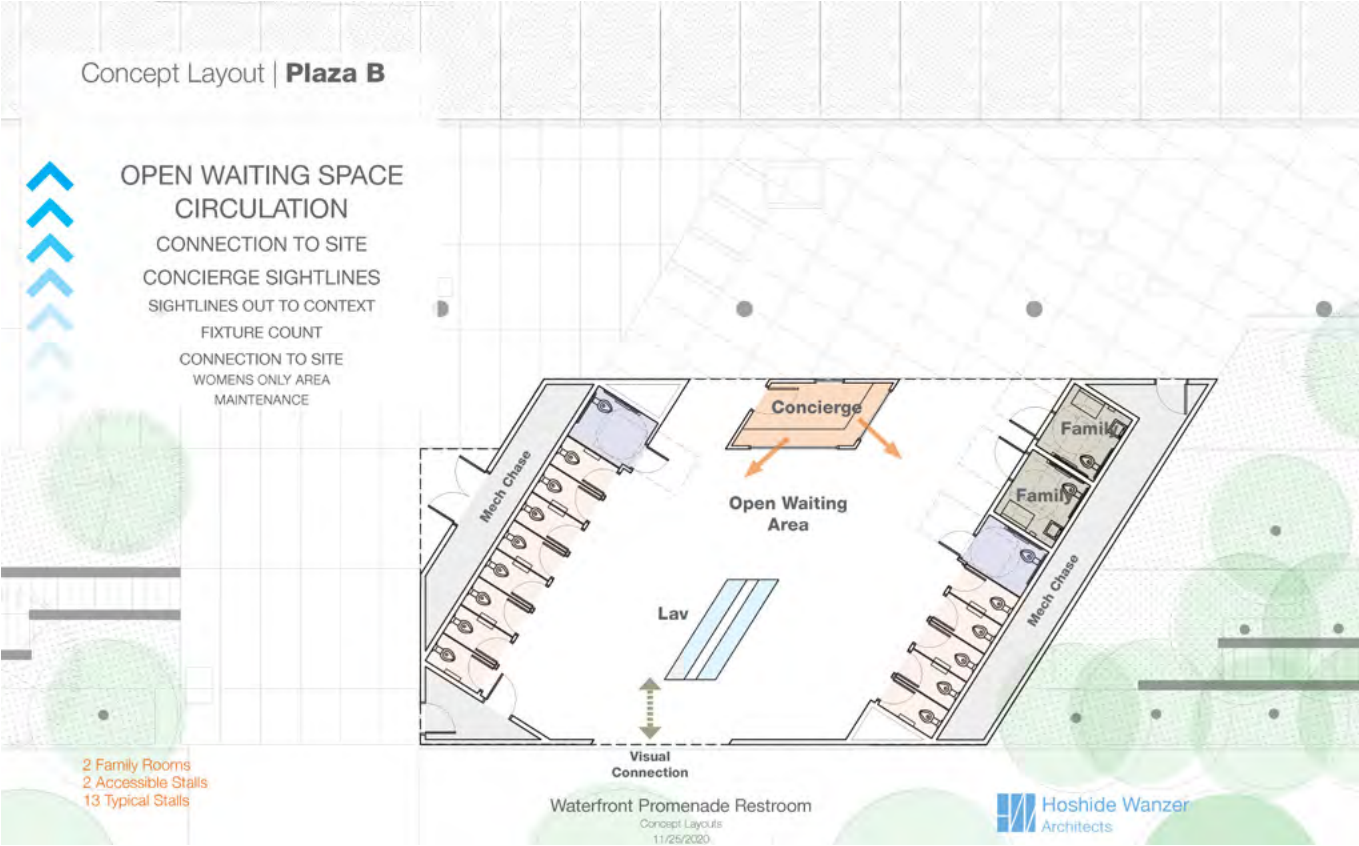
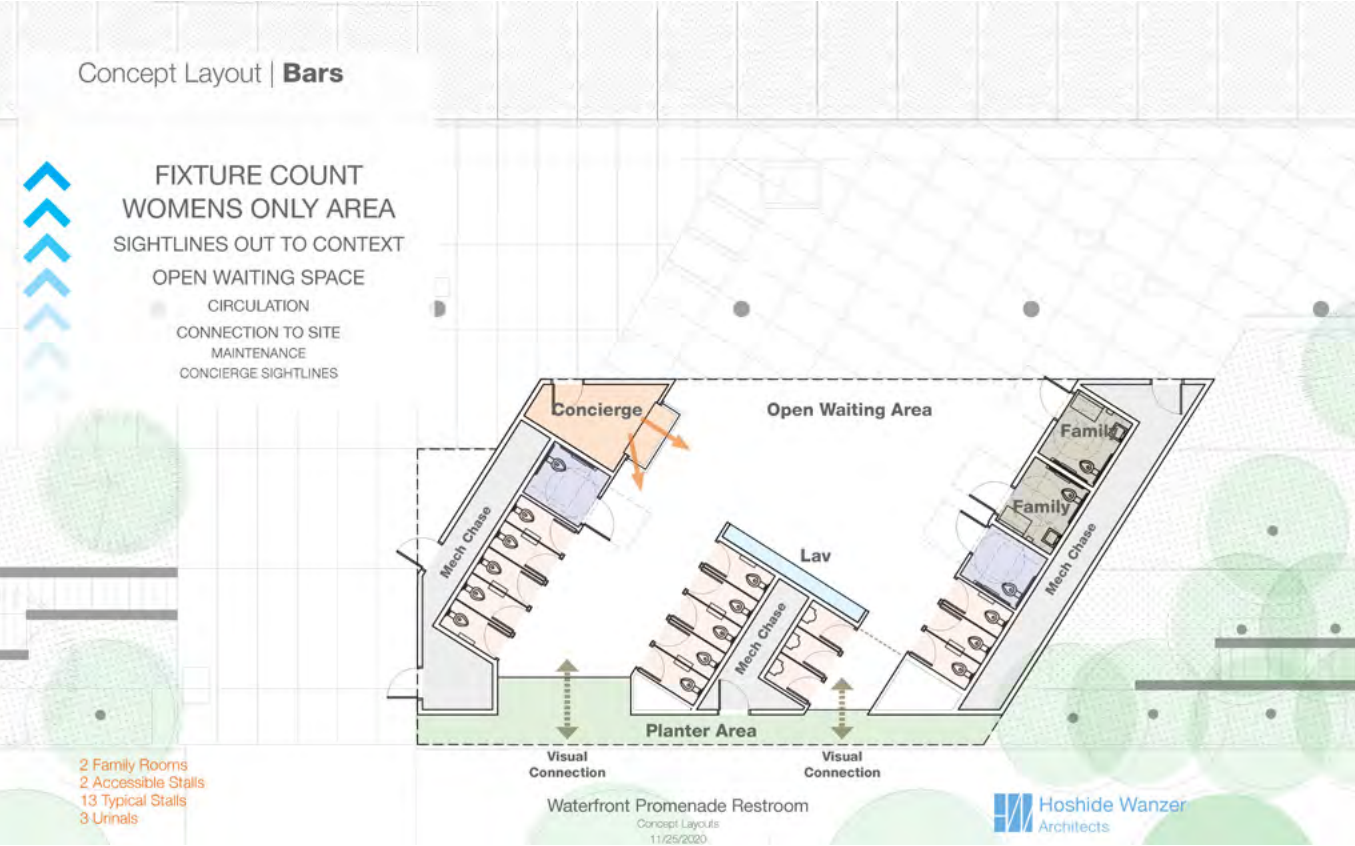
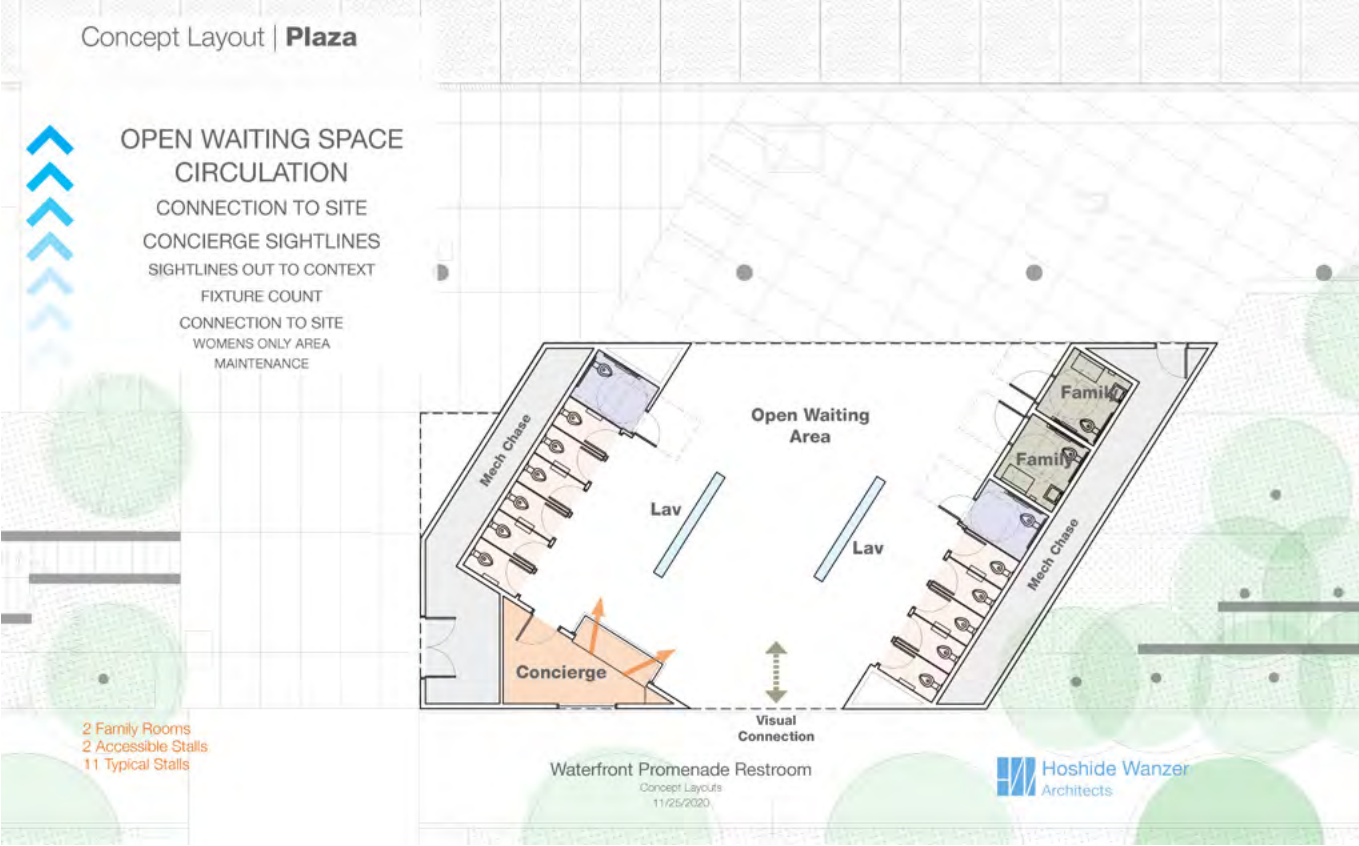
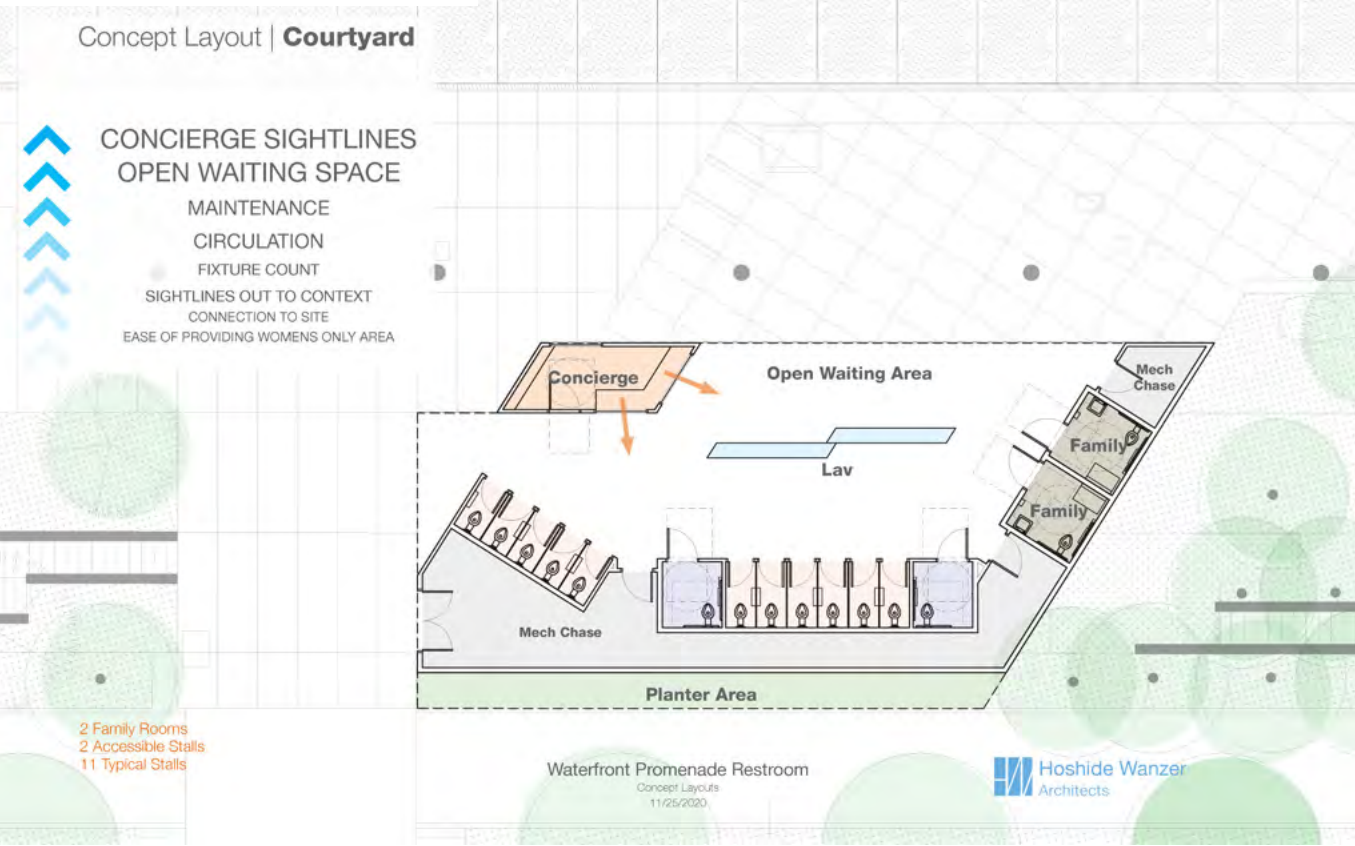


**COMMUNITY INPUT**



# INITIAL IDEAS

## 4 CONCEPTS





## COMMUNITY INPUT

**Initial outreach as part of Pier 58 on-line open house: November/December 2020**

**Four focus group meetings targeting parents, disability and homeless advocacy groups, LGBTQIA and immigrant/refugee communities: January/February 2021**

### **Key Feedback:**

- Design facility in a way that feels inviting and safe to all people regardless of background.
- Provide as much room for movement as possible with multiple access points in and out of the facility. Make sure access points are visible and have separation from driveways and the cycle track.
- Provide extra room in stalls of all types for people with mobility needs, but also because families and visitors to the Waterfront may have more bags or belongings to enjoy and use in the facilities
- Provide wayfinding to the restroom and good, clear signage within the restroom
- Important that attendant/concierge station is visible and that staff is well-trained to deal with various user needs and situations
- Provide thoughtful amenities: variable fixture heights, touchless fixtures are preferred, restrict views to open doors, provide grab-bars in all stalls, provide adequate lighting, places to sit, places to hang belongings and store larger items
- Alarms and security features need to accommodate different senses and needs
- A design that incorporates historical elements, connects to the environment and Coast Salish heritage would be appreciated



## COMMUNITY INPUT

### Accessibility Roundtable Discussion: April 28, 2021

#### Key Feedback:

- Attendees who also attended groups appreciated the design direction and the larger than typical stall sizes
- Request to consider including adult changing table in one of the multi-purpose stalls and to remove a baby changing table in one multi-purpose stall
- Reminders to make sure there are a diversity of fixture heights and lavatory options
- A request to consider options nearby for service animal needs
- A reminder to make sure lighting and ventilation take into account winter weather

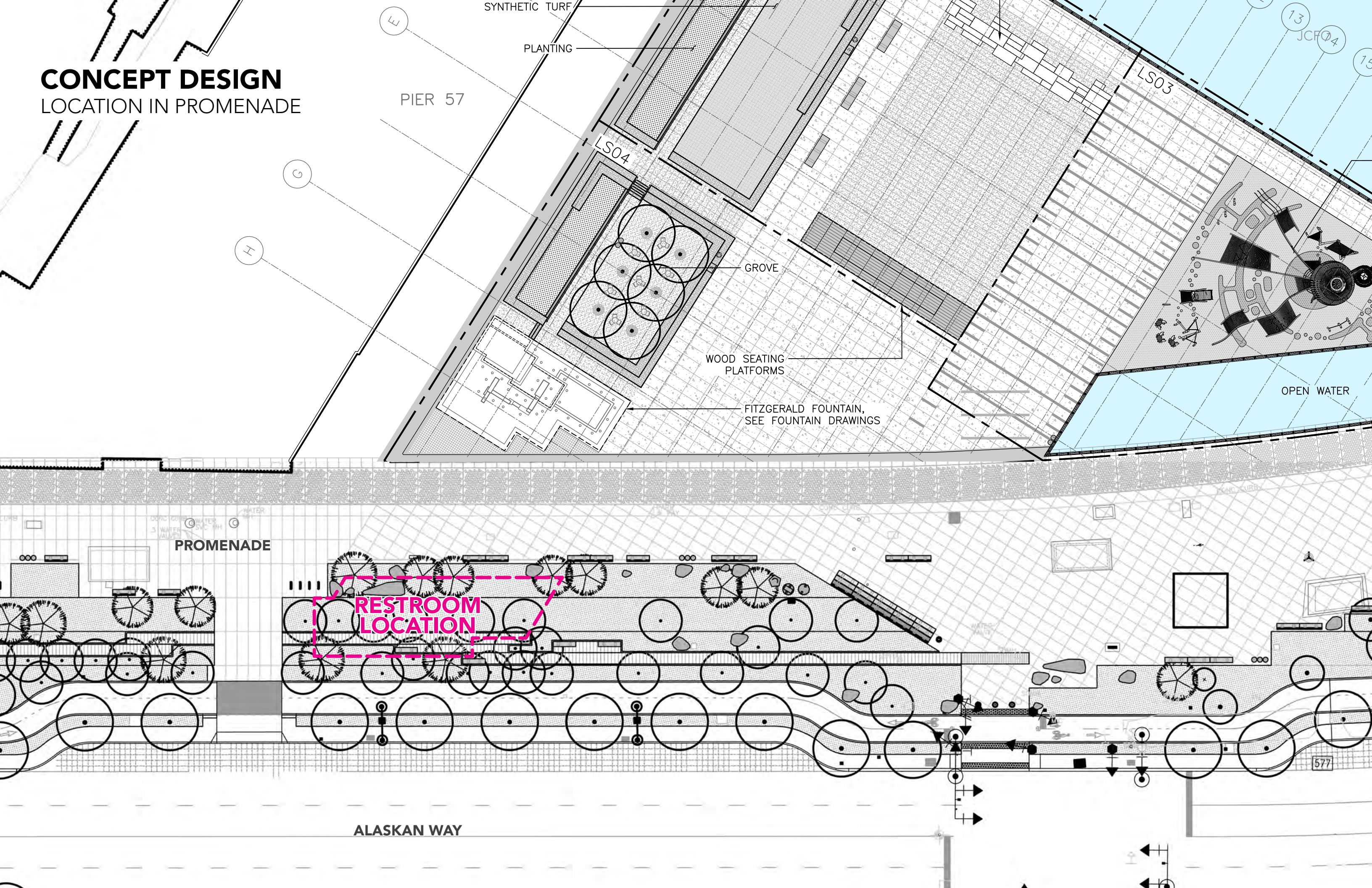
**On-going discussions with Seattle Parks and Recreation and Friends of Waterfront Seattle (joint operators of the Waterfront Restroom Facility)**



# CONCEPT DESIGN DEVELOPMENT



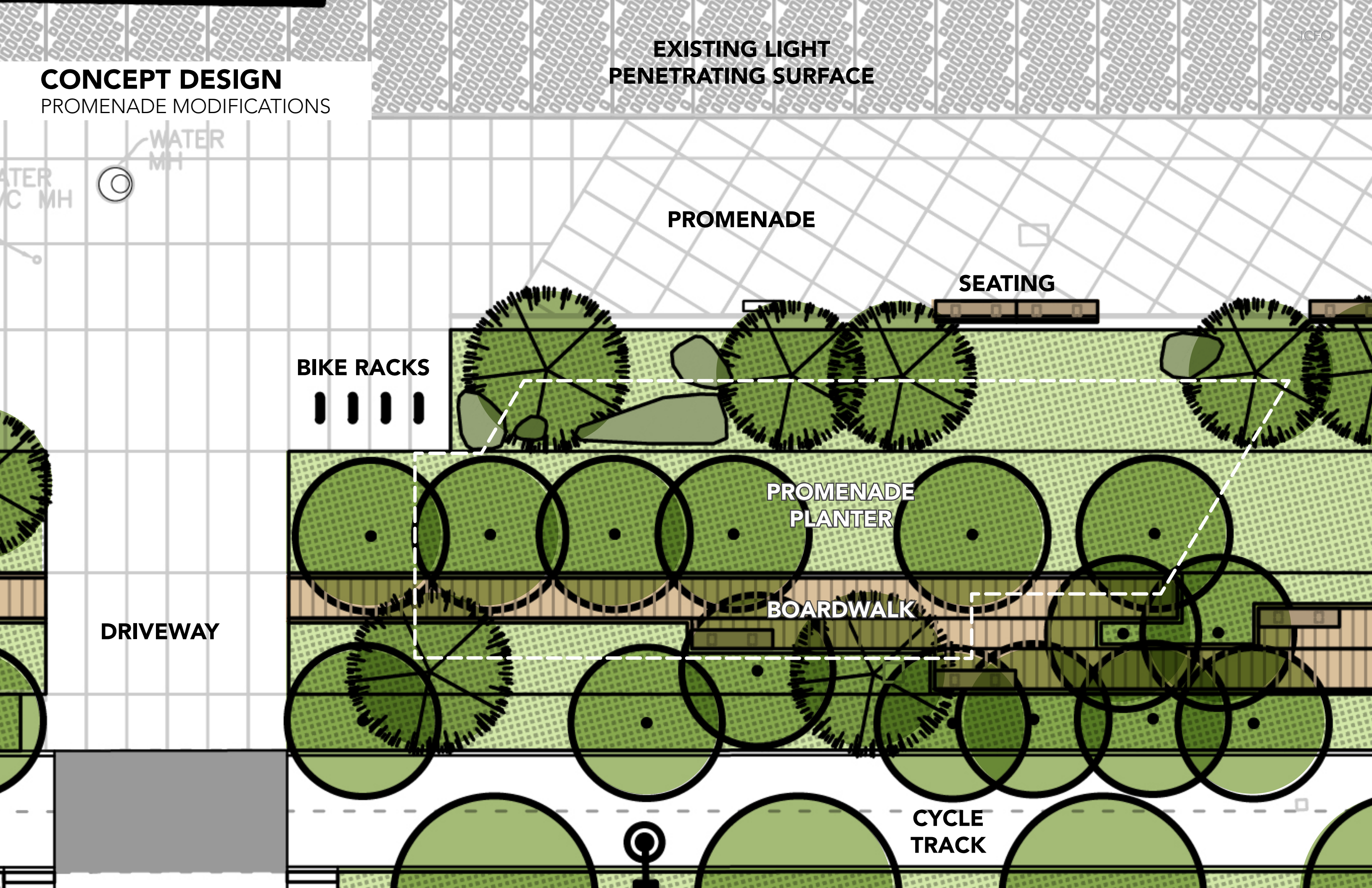
**CONCEPT DESIGN**  
LOCATION IN PROMENADE





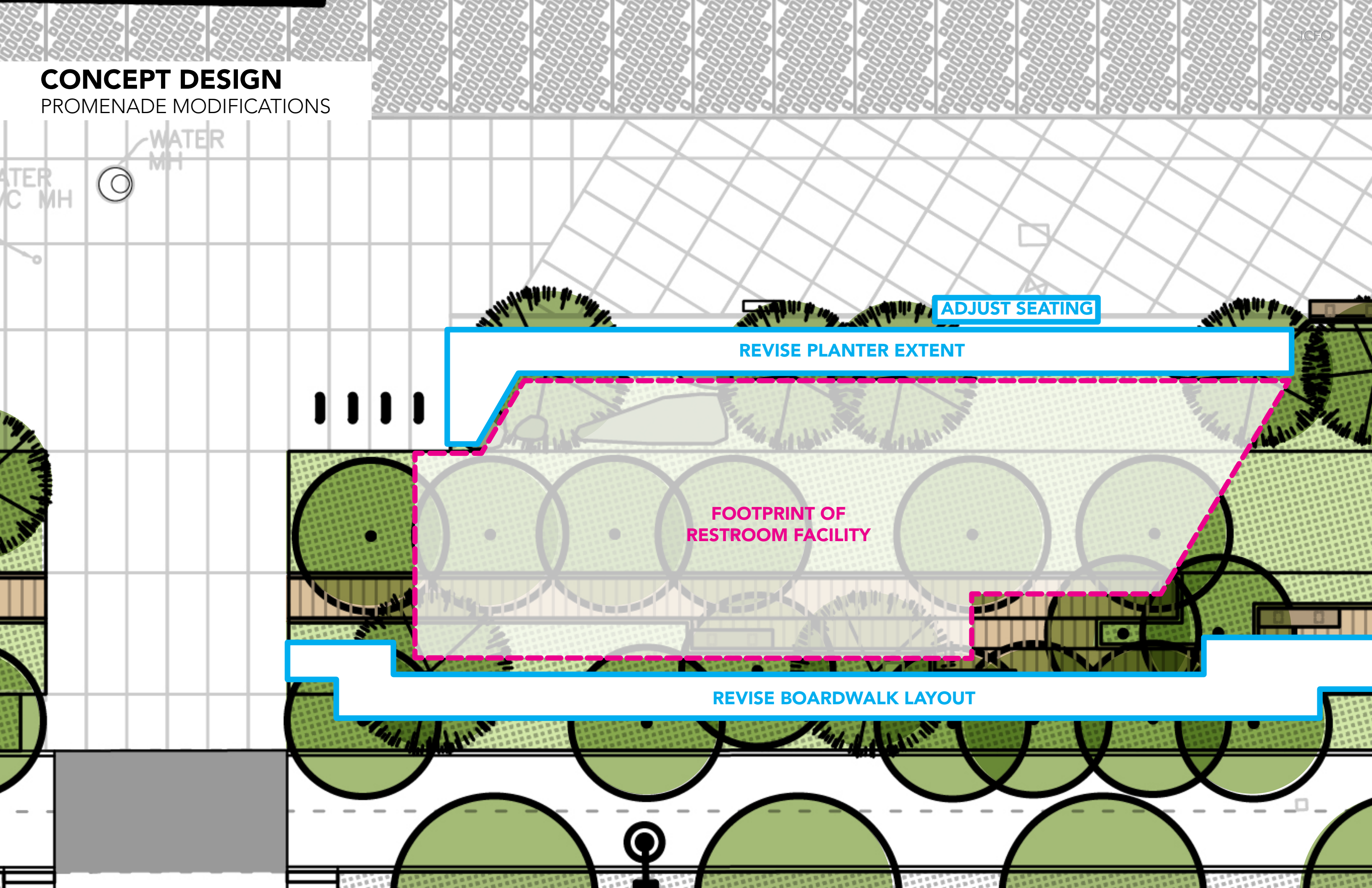
**CONCEPT DESIGN**  
PROMENADE MODIFICATIONS

**EXISTING LIGHT  
PENETRATING SURFACE**





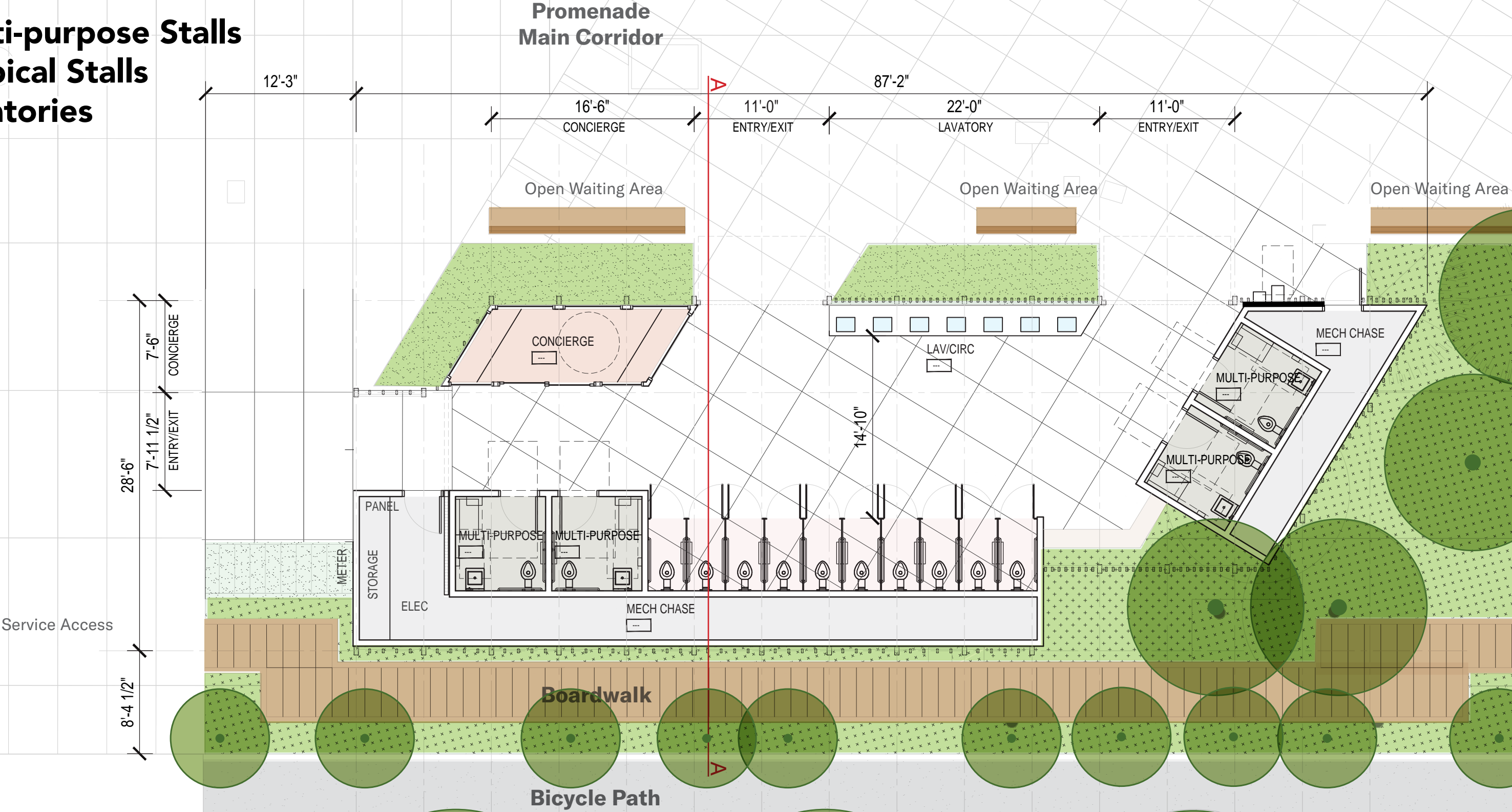
**CONCEPT DESIGN**  
PROMENADE MODIFICATIONS





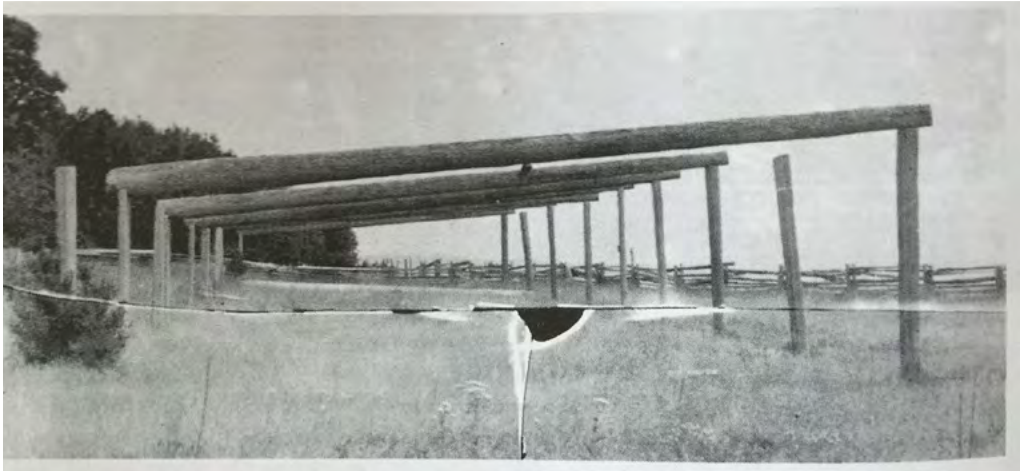
CONCEPT DESIGN  
FLOOR PLAN

4 Multi-purpose Stalls  
10 Typical Stalls  
7 Lavatories





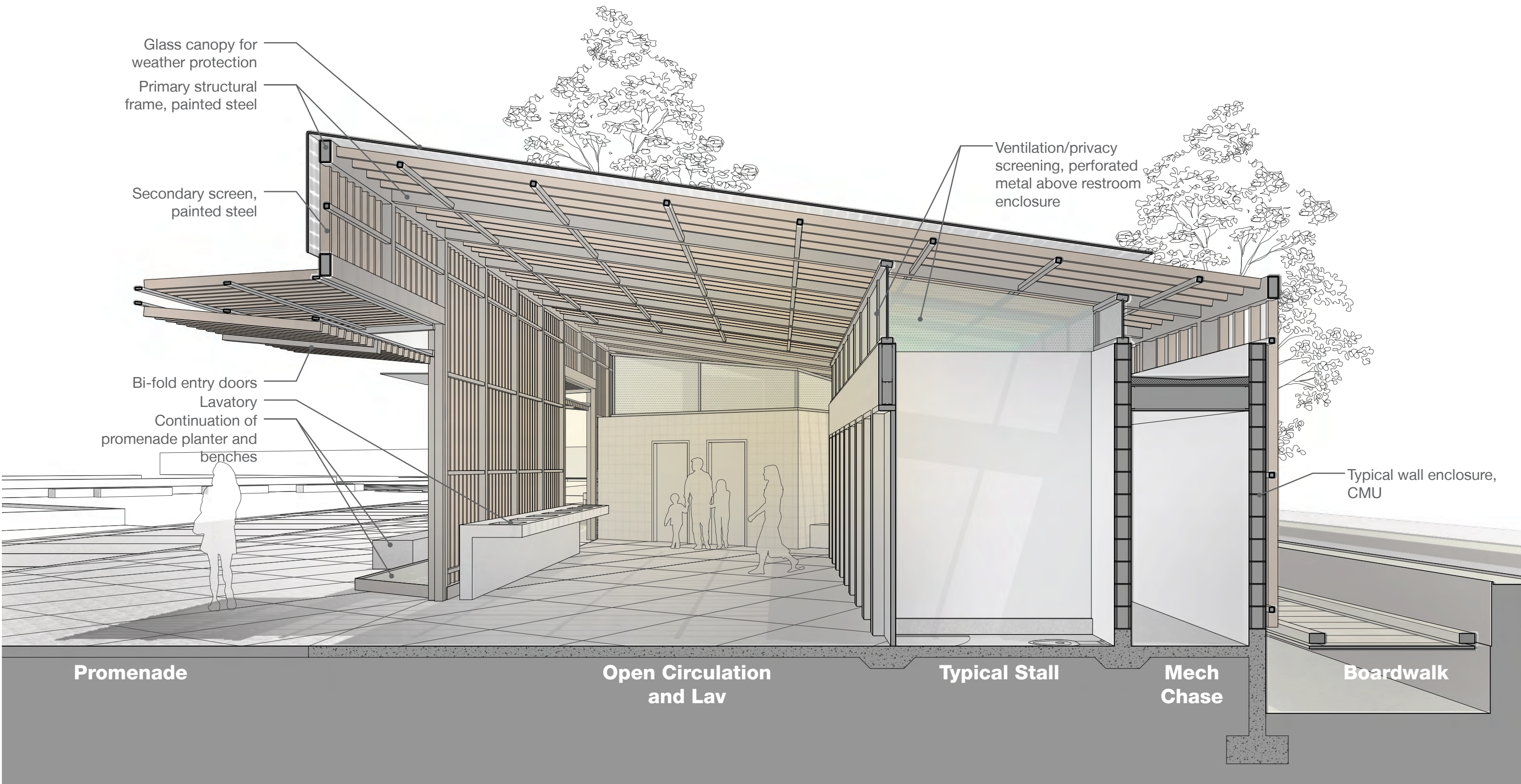
CONCEPT DESIGN  
INSPIRATION





# CONCEPT DESIGN

## SECTION ELEVATION LOOKING NORTH





**CONCEPT DESIGN**  
OVERVIEW

HW





# CONCEPT DESIGN

VIEW FROM UNION STREET LOOKING SOUTH





**CONCEPT DESIGN**  
VIEW FROM PIER 58 LOOKING EAST





**CONCEPT DESIGN**  
VIEW FROM PIER 57 LOOKING NORTH



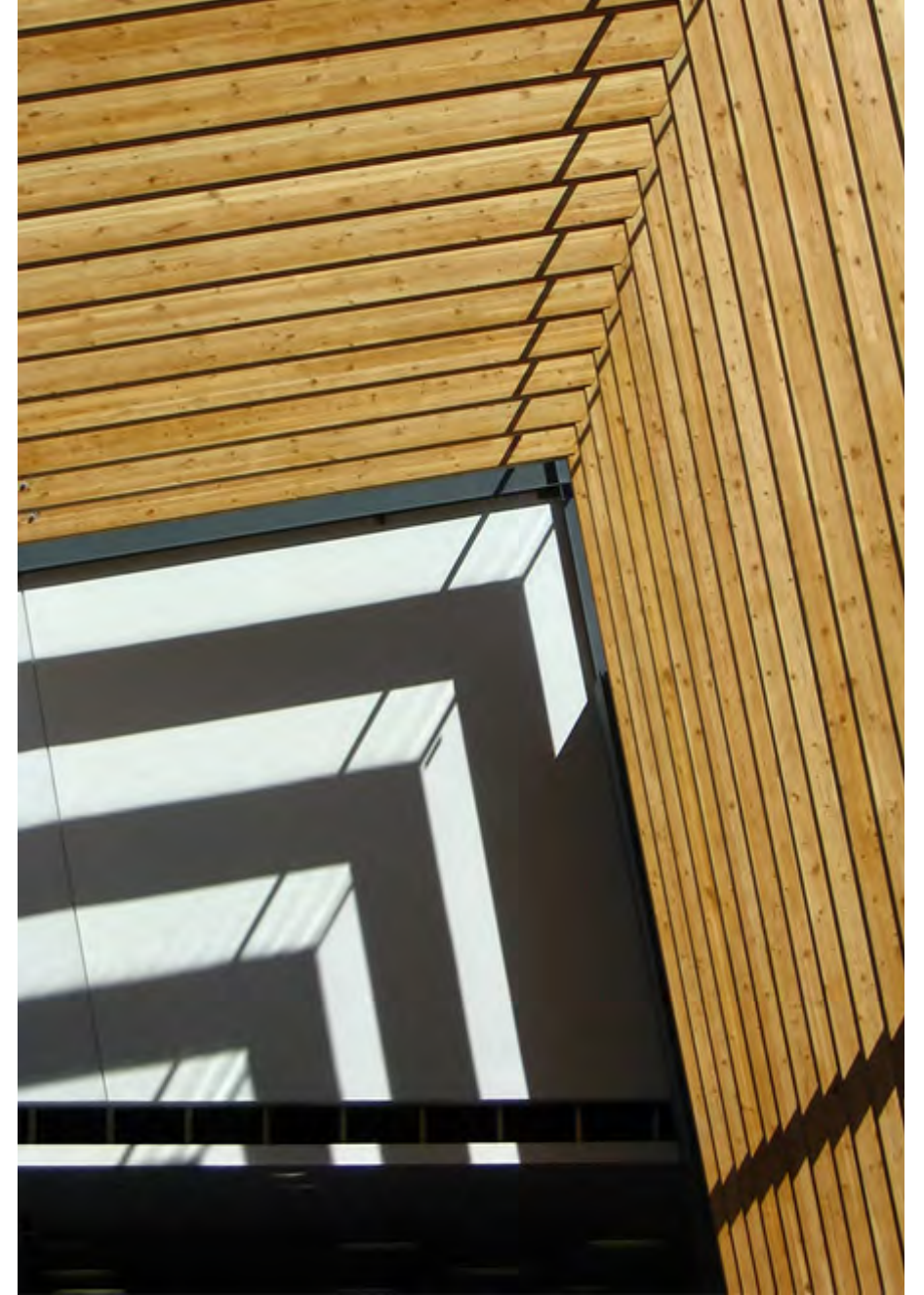


**MATERIALS**



# CONCEPT DESIGN

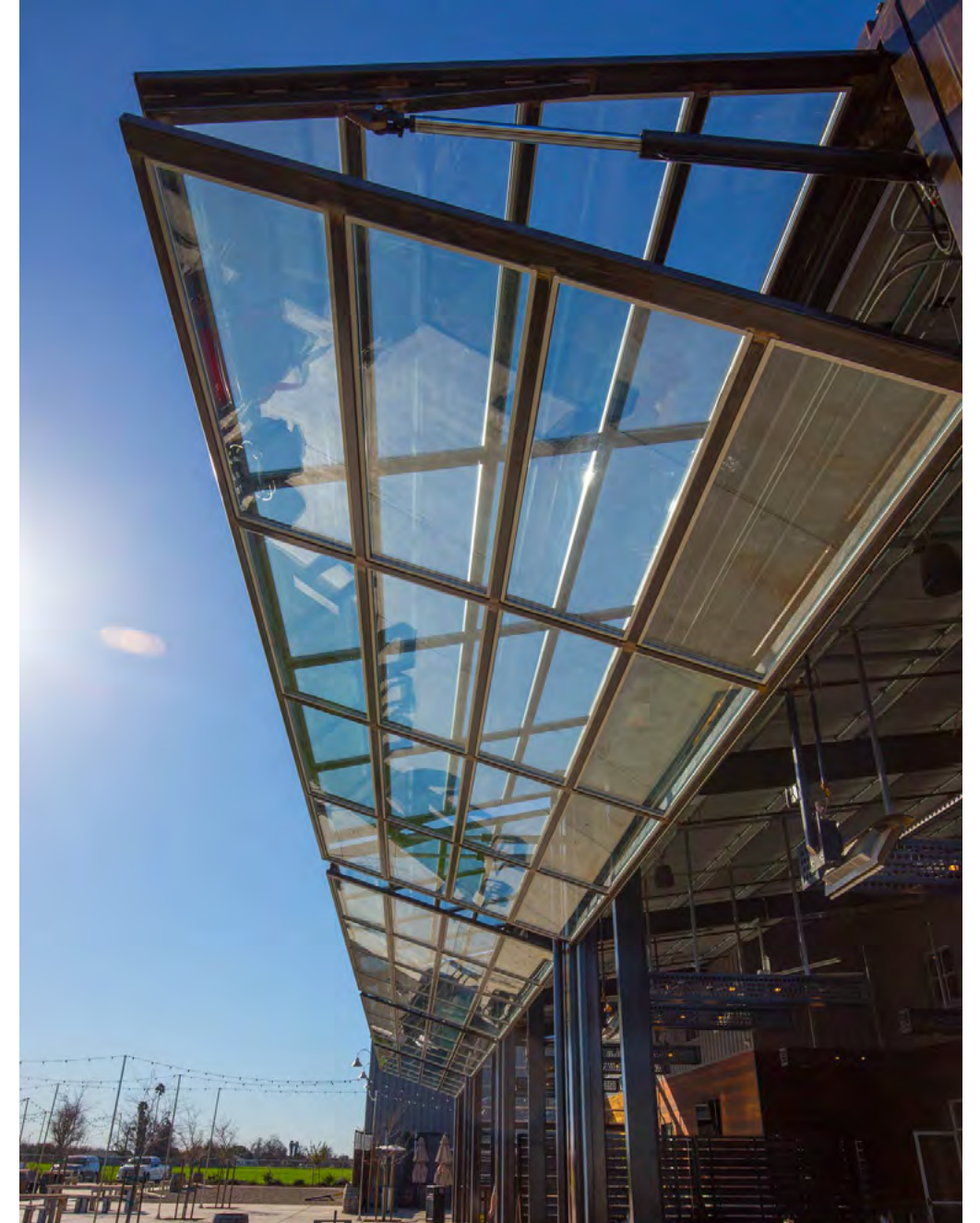
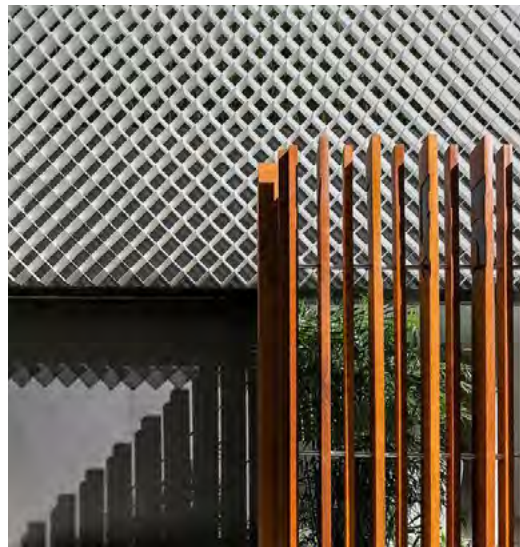
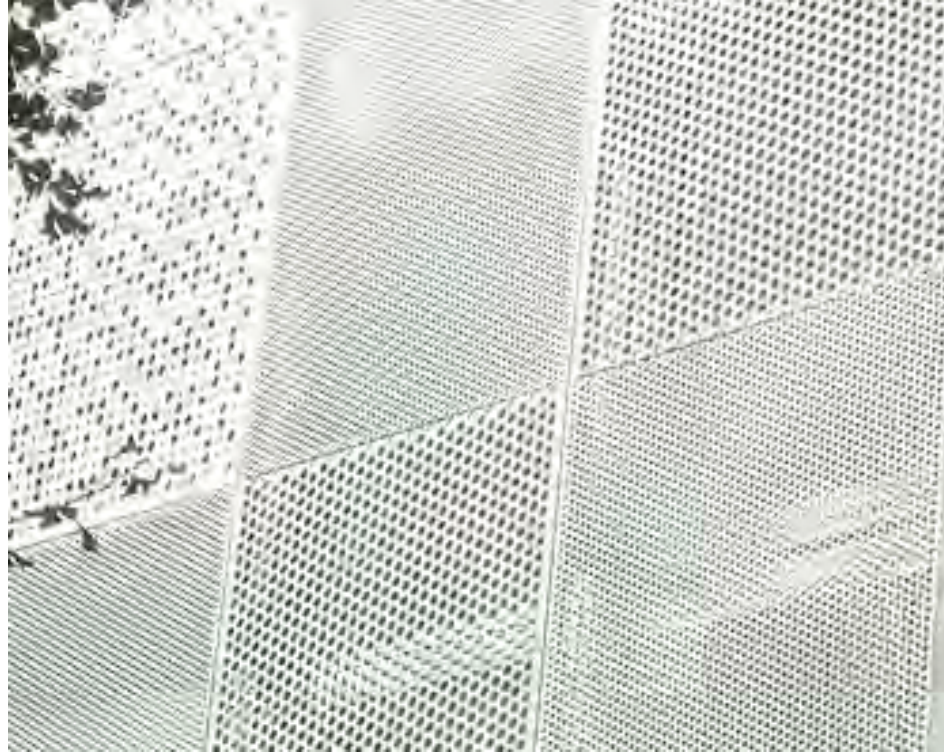
MATERIAL PALETTE - PAINTED STEEL, LIGHT/SHADOW





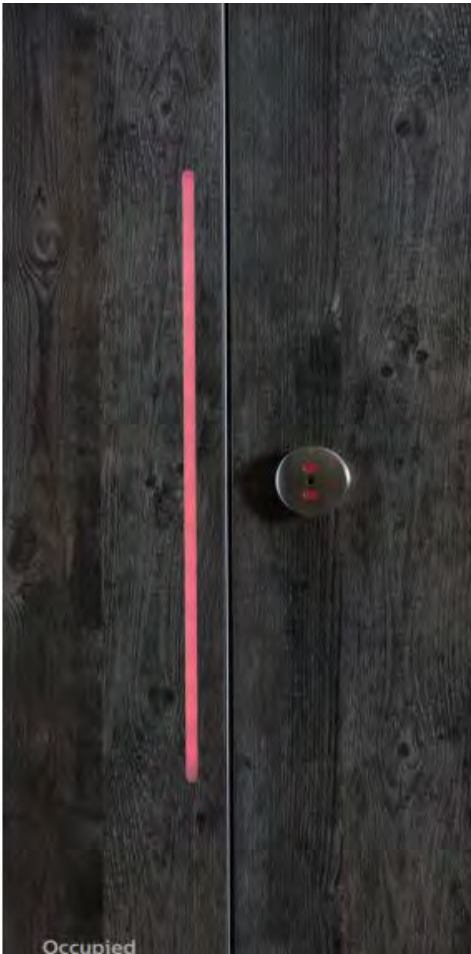
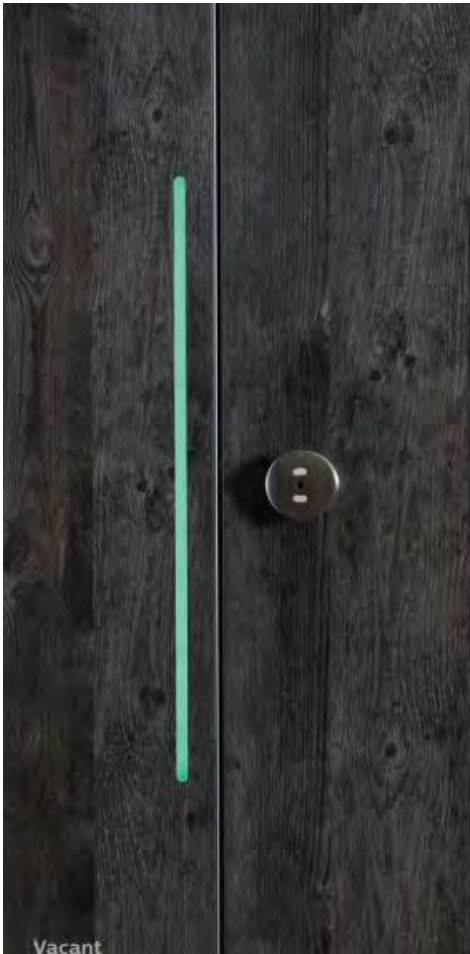
# CONCEPT DESIGN

MATERIAL PALETTE - CMU, PERFORATED VENTILATION/PRIVACY SCREEN, BI-FOLD ENTRY DOOR





**CONCEPT DESIGN**  
MATERIAL PALETTE - PARTITION, STALL OCCUPANCY, TOUCHLESS FIXTURES





# CONCEPT DESIGN

## LIGHTING



The lighting for the restroom will utilize the play between private solid and open circulation spaces as well as the slat patterning. We want to achieve an open structure that will have a lantern quality at night.



**NEXT STEPS**



**NEXT STEPS**

INCORPORATE FEEDBACK FROM SDC SUBCOMMITTEE

CONTINUE TO WORK WITH PARKS AND FRIENDS TO FINALIZE DESIGN

IDENTIFY STRATEGIC OPPORTUNITIES TO ENGAGE PUBLIC DURING DESIGN

INCORPORATE REVISIONS INTO PROMENADE DESIGN

COORDINATE FUTURE SDC DISCUSSIONS