



PIER 58 WATERFRONT FOR ALL

Pier 58, currently known as Waterfront Park, is an important part of accomplishing Waterfront Seattle's goal of a "Waterfront for All." Pier 58, currently closed due to its poor structural condition, will be fully replaced as part of the City's Waterfront Seattle Program. It is being redesigned with a focus on improving access and use for the community, and creating an inviting space for families. The rebuilt pier will also improve marine habitat and provide enhanced views of Elliott Bay and the Olympic Mountains.

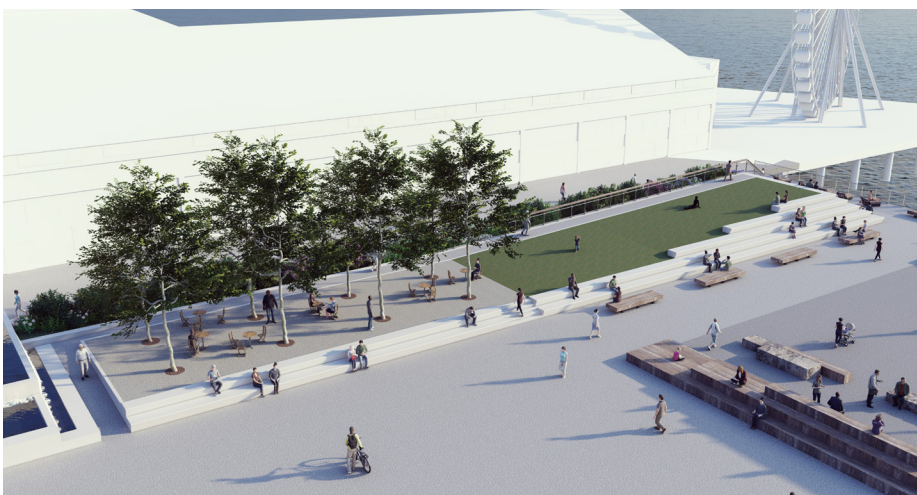
ELEMENTS OF THE NEW PIER

The space is being designed to provide for flexible programming and will include the following elements:

- **An elevated seating area and lawn** for relaxing and enjoying scenic views.
- **A viewing area** that provides large, open views to the Bay and the Olympic Mountains.
- **The Fitzgerald Fountain**, currently on Pier 58, will be restored and integrated into the new pier.
- **A plaza and event space**, that can be used for seasonal activities such as concerts, outdoor movies and other pop-up events.
- **A play area** for kids and families. The concept for this element is still under development.
- **A restroom** and concierge space adjacent to the promenade to serve visitors and families and to provide information on current programming.



The above design features promote areas for play and relaxation.



The new pier includes an elevated seating area and lawn to enjoy scenic views.



Seattle
Office of the Waterfront
and Civic Projects



New artwork along the promenade

A new permanent installation called *Family*, by local artist and Puyallup Tribe member Shaun Peterson, will greet visitors on the promenade near Pier 58.

The three welcome figures will look out over the pier to the water, across the bay to the Kitsap Peninsula, where Chief Seattle is buried.

HABITAT IMPROVEMENTS

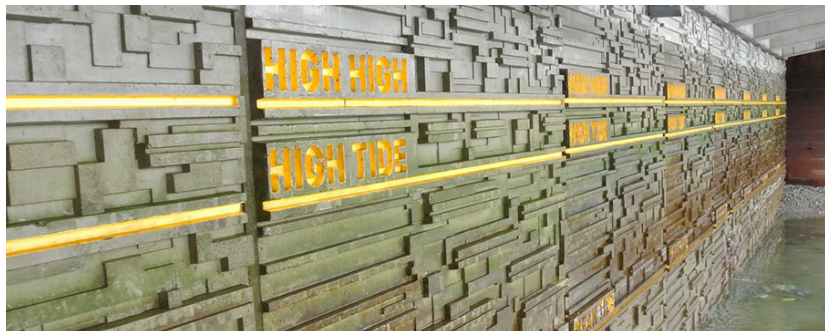
The design of Pier 58 is improving habitat, including enhancing the fish migration corridor that the Seawall Project completed in 2017.

Habitat will be improved by:

- An open area above the intertidal zone(s) that will provide additional light to the nearshore habitat. This helps aquatic plants (or fish food) to grow and enhances fish migration.
- New light penetrating surfaces, like the grating used for Pier 62. Additional light provides a safer passage for juvenile fish near the shore where there are fewer large predators.
- Reshaping the pier to provide an alternative access point near the north end of the pier for fish to enter the fish migration corridor.



Grating, as pictured above, and other light penetrating surfaces provide light for young salmon during their migration.



The adjacent Seawall was completed in 2017 and has textured face panels, light penetrating surfaces above, and habitat benches below to provide improved salmon habitat.

New restroom across the way

Another element of Pier 58 is the construction of a new restroom and concierge space on the promenade across from the pier.

A concierge will be available during the day to answer questions on current programming and help you find your way!

SCHEDULE

Pier 58 is currently in the design phase and is scheduled to achieve 60% design in late 2020 with final design in late 2021. Construction is anticipated to start in 2022 and take approximately two years to complete.

QUESTIONS OR COMMENTS?

Email us: info@waterfrontseattle.org

Call us: 206.499.8040

VISIT OUR WEBSITE

Sign up for email updates: waterfrontseattle.org